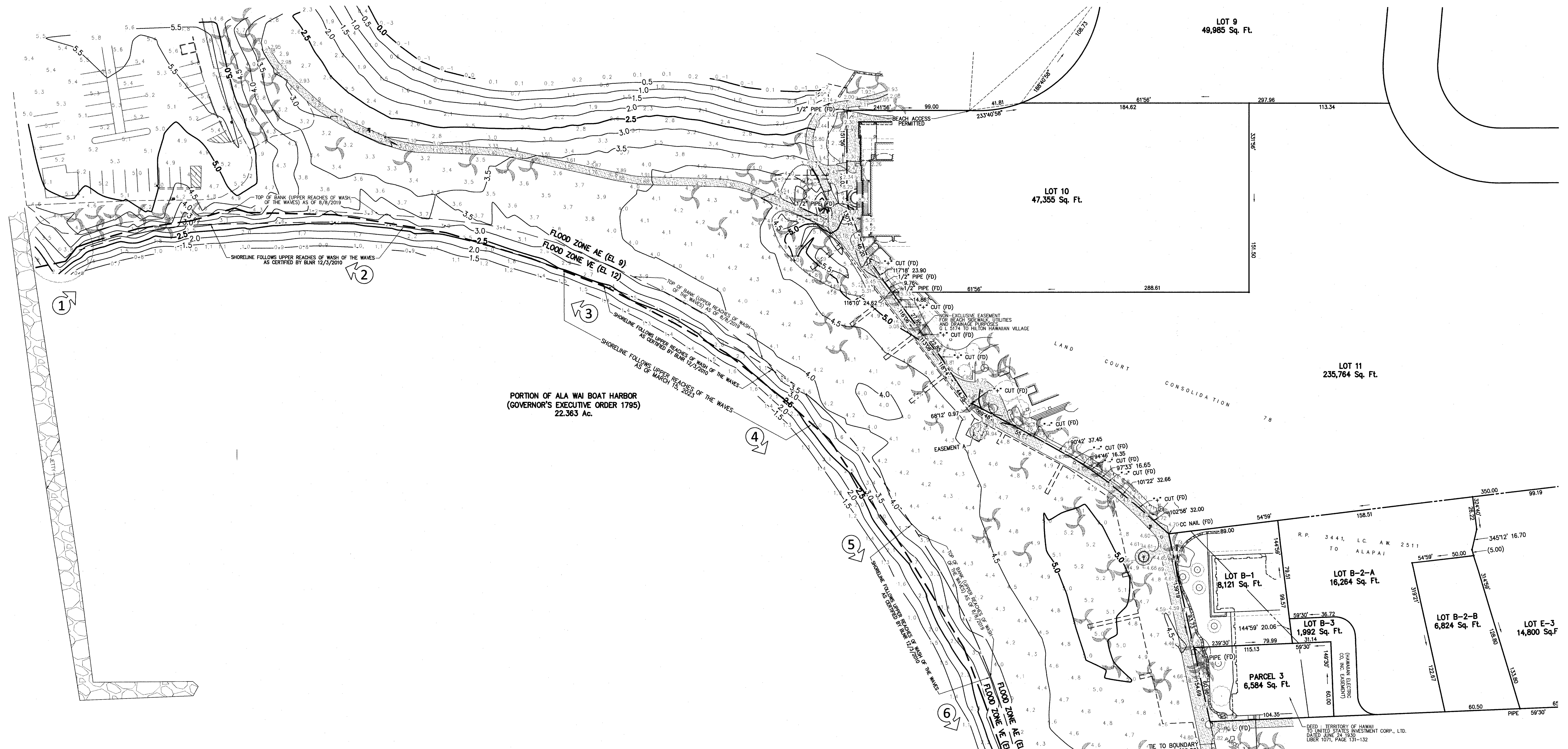


TRUE NORTH
SCALE: 1 IN. = 40 FT.

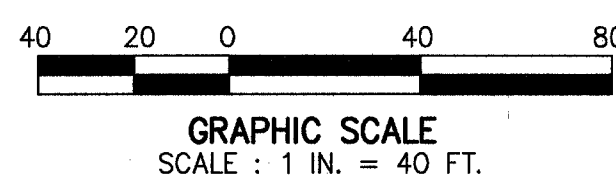


LEGEND

LINWORK	SYMBOLS
———	PRIMARY BOUNDARY LINE
- - - - -	HISTORIC LAND TITLE LINE
- · - · -	SUPPLEMENTARY BOUNDARY LINE
- - - - -	EASEMENT LINE
———	BUILDING LINE
———	UNDERGROUND GASLINE
———	UNDERGROUND WATER
———	UNDERGROUND SEWER
———	UNDERGROUND STORM DRAIN
———	FENCE LINE
———	PARKING/STRIPING LINE
———	FLOOD ZONE
———	TOP OF SLOPE
———	ACCESS PERMITTED
———	NO VEHICULAR ACCESS PERMITTED
———	NO ACCESS PERMITTED
A.C.	ASPHALTIC CONCRETE
AL	AIR CONDITIONING UNIT
AL	AREA LIGHT
ARV	AIR RELIEF VALVE
BFP	BACK FLOW PREVENTER
CATV	CABLE TELEVISION BOX
CB	CATCH BASIN
CBMH	CATCH BASIN MANHOLE
COMM	COMMUNICATIONS BOX
DI	DRAIN INLET
EBX	ELECTRICAL BOX
FH	FIRE HYDRANT
GTMH	GREASE TRAP MANHOLE
GW	GUY WIRE
HECO	HAWAIIAN ELECTRIC COMPANY
HEMH	HAWAIIAN ELECTRIC MANHOLE
HTCO	HAWAIIAN TELCOM (COMMUNICATIONS)
HTMH	HAWAIIAN TELCOM MANHOLE
ICB	IRRIGATION CONTROL BOX
ICV	IRRIGATION CONTROL VALVE
LP	LAMP POST
PALM	PALM TREE
PP	POWER POLE
SDMH	STORM DRAIN MANHOLE
SLB	STREET LIGHT BOX
SMH	SEWER MANHOLE
SP	SIGN POST
STL	STREET LIGHT
TSB	TRAFFIC SIGNAL BOX
TYP	TYPICAL FEATURE
UBX	UTILITY BOX
UMH	UTILITY MANHOLE
UP	UTILITY POLE
WCR	WHEEL CHAIR RAMP
WM	WATER METER
WMH	WATER MANHOLE
WV	WATER VALVE

NOTES

- FIRM DATA**
 FLOOD ZONE: AE (EL 9)/VE (EL 12) SEE MAP
 COMMUNITY NO: 150001
 FIRM INDEX DATE: 11/05/2014
 LETTER OF MAP CHANGE: NONE
 FEMA FIRM PANEL: 15003C0362C, 15003C0365C, 15003C0366G, 15003C0368G
 PANEL EFFECTIVE DATE: 1/19/2011
 (TAKEN FROM STATE OF HAWAII - NFIP, FLOOD HAZARD ASSESSMENT TOOL <http://gis.hawaii.nfip.org/fmat/>)
- ALL VISIBLE UTILITY STRUCTURES HAVE BEEN LOCATED IN THE FIELD, HOWEVER, CONNECTION OF UNDERGROUND UTILITY LINES AS SHOWN ARE UN-VERIFIED AND COMPILED FROM EXISTING DATA.
 UNDERGROUND UTILITIES SHOWN HEREON ARE FOR INFORMATION ONLY, HAVING BEEN OBTAINED FROM THE BEST AVAILABLE SOURCES, BUT FROM OTHERS NOT CONNECTED WITH THIS COMPANY. THEREFORE, NO GUARANTEE IS MADE ON THE ACCURACY OR COMPLETENESS OF SAID INFORMATION.



**MAP SHOWING
 SHORELINE SURVEY
 PORTION ALA WAI BOAT HARBOR
 GOVERNOR'S EXECUTIVE ORDER 1795
 AT KALIA, WAIKIKI, HONOLULU, OAHU, HAWAII**
 SCALE: 1 IN. = 20 FT.
 APRIL 21, 2023 WALTER P. THOMPSON, INC.



THIS WORK WAS PREPARED BY
 ME OR UNDER MY SUPERVISION
John R. K. Akina
 Exp. 04/30/24