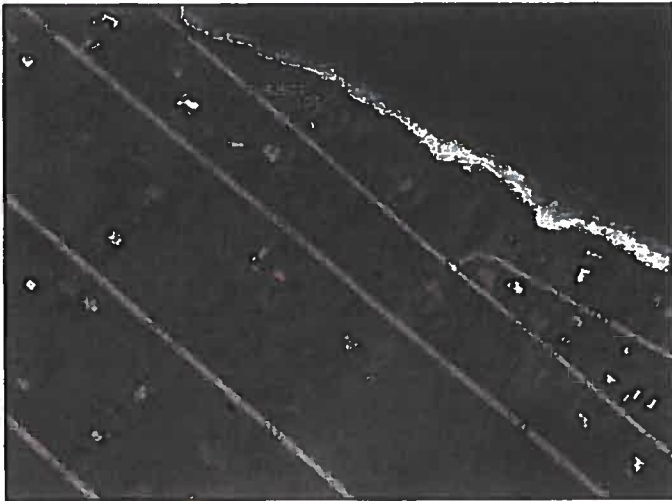
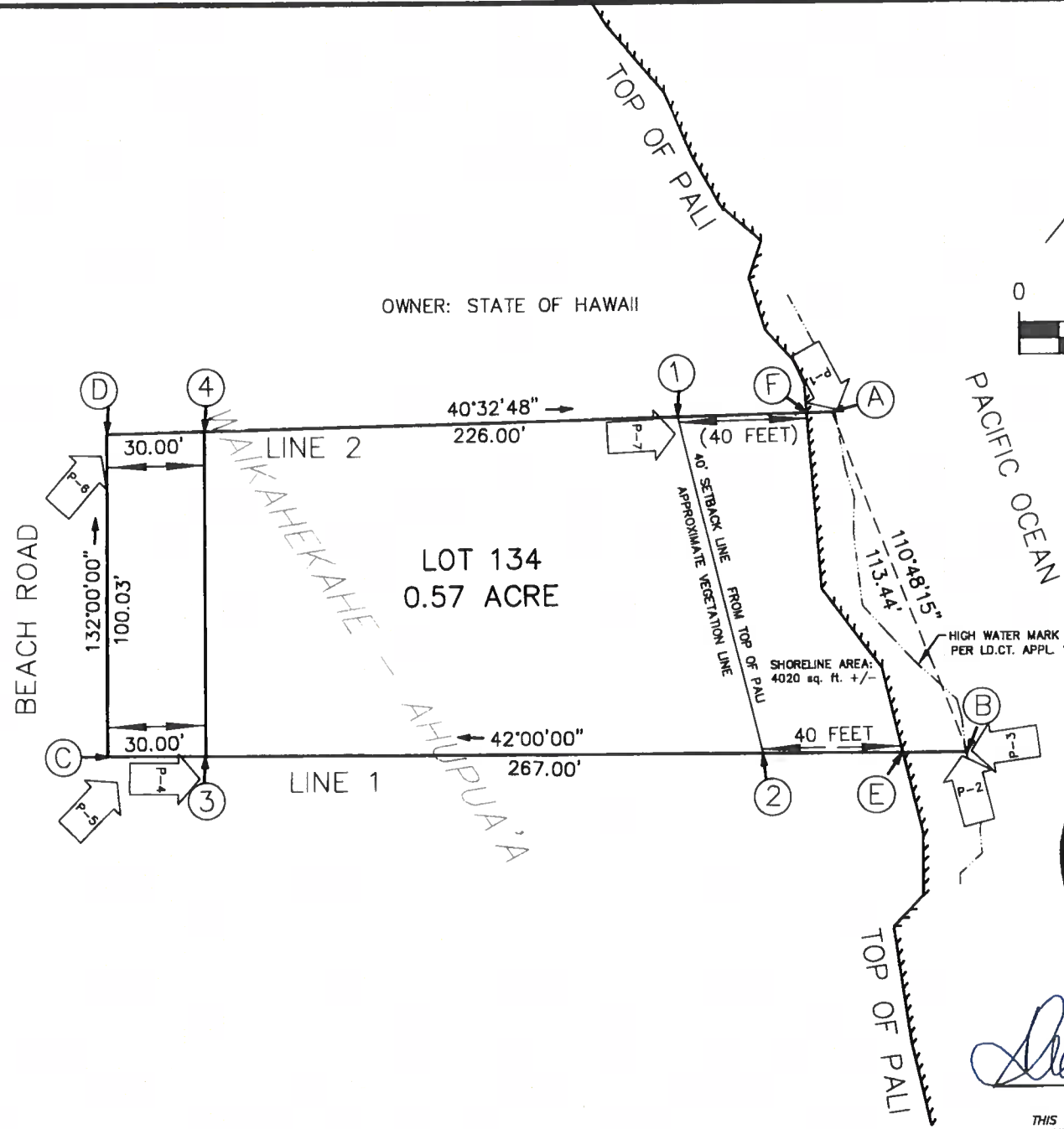
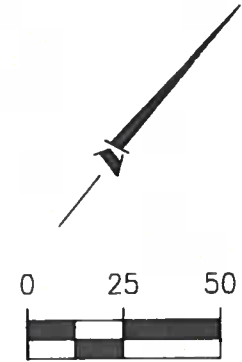


PROJECT SITE LOCATION
N.T.S.



OWNER: STATE OF HAWAII



MAP LABEL DESCRIPTIONS

- (A) NW Calculated boundary corner (point falls in ocean)
- (B) NE Calculated boundary corner (point falls in ocean)
- (C) SE Boundary corner 1/2" set
- (D) SW Boundary corner spike fd
- (E) NE Boundary corner nail set at approximate top of pali
- (F) NW Boundary corner nail set at approximate top of pali

MAP LABEL DESCRIPTIONS (cont.)

- (1) "Nail set" on line 2, 40 Feet from NW Boundary corner.
- (2) "Nail set" on line 1, 40 Feet from NE Boundary corner.
- (3) "Nail set" on line 1, 30 Feet from SE Boundary corner.
- (4) "Nail set" on line 2, 30 Feet from SW Boundary corner.



Shawn D. Christensen
SHAWN D. CHRISTENSEN
HAWAII PLS NUMBER 12767
THIS WORK WAS PREPARED BY ME OR UNDER MY DIRECT SUPERVISION

MANA LAND CONSULTANTS
PROFESSIONAL LAND DEVELOPMENT SERVICES
PO BOX 1103 KAPAA, KAUAI HAWAII 96748
HILO OFFICE: 808-212-4838 EMAIL: HILOSURVEYOR@AOL.COM
WWW.MANALANDLLC.COM

SURVEY NOTES:

1. AZIMUTHS AND COORDINATES ARE PER LAND COURT APPLICATION 1053; MAP 66.
2. MONUMENTATION AND/OR EXISTING BOUNDARY MARKERS WERE USED TO DERIVE SUBJECT LOTS BOUNDARY COORDINATES. (SEE FB#413 PAGES 22-25).
3. ARROW SYMBOLS WITH "P-#" DEPICT DIRECTION AND POSITION ON MAP OF PICTURE TAKEN.
4. CIRCLE SYMBOLS WITH LETTERS OR NUMBERS DEPICT POINTS SET OR LOCATED IN THE FIELD.
5. DATE OF SURVEY JULY 13, 2022.
6. BOUNDARY LINE ALONG SEA PALI WAS DETERMINED BY THE HIGHEST SPLASH OF WAVE PER HAR TITLE 13, SUB TITLE 10, CHAPTER 22, SUB CHAPTER 3 PARAGRAPH (6).
7. RECORD MAKA BOUNDARY CORNERS FELL IN THE OCEAN.

OWNER
WILLIAM & SUSAN HOUSTON
7737 SPANISH BAY DRIVE
LAS VEGAS NEVADA, 89113
TMK 3-1-5-032:060

CERTIFIED SHORELINE SURVEY
HAWAIIAN PARADISE PARK
LOT 134, BLK 11, MAP 66 LCAPP 1053
PARCEL NUMBER 150321060000
TMK 3-1-5-032:060
ISLAND AND COUNTY OF HAWAII, HAWAII

PROJECT NO.
22-1008
MAP SCALE: 1" = 50'
SHEET NO.
1 OF 1