

Kodak Gray Scale



© Kodak, 2007 TM: Kodak

A 1 2 3 4 5 6 M 8 9 10 11 12 13 14 15 B 17 18 19

Feb. 25, 1843

Nona hikia i hoofilikia ia mai, a no ko onakou manao aole loa e hiki ke ae ina mai koia mai e like me ke ano o ke koi ana mai a ka Luna o ke Lii Wahine Beritania ia onapou no na hoopii o na haale Beritania. Ke haawi aku nei ma keia palapala i ka Pae Aina i kapaia ko Hawaii Pae Aina na ka Pt Hon. Haku Geo Paulet Kapena o ke Lii Wahine moku Kaula Campfort, ka Luna o Victoria ke Lii Wahine o Beritania Nui a me Irelani mai keia la aku, a no keia onanawa e noho nei, ua haawia nae keia, me ka manao e hanaia no e like me ka olelo ana o na Luna i kohoa e maua e olelo pu me ke Aupuni o ke Lii Wahine Beritania a ina paha ua holo ole ka olelo ae like mamua o ke kakau ana o keia, alaila e hanaia e like me ka hooponopono ana o ke Aupuni o ke Lii Wahine Beritania ma ke kamailio pu ana me na Luna i kohoa e maua a ina paha ua loa ole ina Luna o maua aua hooleia paha ko lana hoolelo ana alaila e hanaia e like me ka manao o ke Aupuni o ke Lii Wahine i hoike ia mai mahofu, ka hiki anaku ilaila o na palapala hoike a maua, a me ka ka Pt Hon. Haku Geo. Paulet.

Ano ka oiaio o keia olelo ke kau nei maua i ko maua inoa a me ko maua wepa i keia la i waka lua kumamama o Teberuari i ka makahiki o ke kakou Haku hoo hahi tausani ewalu haneri me ka anaha kumamama kolu.

Ma Honolulu Oahu ko Hawaii Pae Aina

Kakauia inua o ke olelo.

G.P. Budd ke  
kakau olelo a me ka  
nuihi olelo mo ke  
aupuni.

(Inoa) Kamehameha III (33)  
(Inoa) Kekaulaohi (29)

# Kodak Gray Scale



© Kodak, 2007 TM: Kodak

**A** 1 2 3 4 5 6 **M** 8 9 10 11 12 13 14 15 **B** 17 18 19

**Kodak Color Control Patches**

© Kodak, 2007 TM: Kodak

inches  
cm

| 1    | 2    | 3     | 4      | 5   | 6       | 7     | 8       | 9     | 10 | 11 | 12 | 13 | 14 | 15 | 16 | 17 | 18 | 19 |
|------|------|-------|--------|-----|---------|-------|---------|-------|----|----|----|----|----|----|----|----|----|----|
| Blue | Cyan | Green | Yellow | Red | Magenta | White | 3/Color | Black |    |    |    |    |    |    |    |    |    |    |

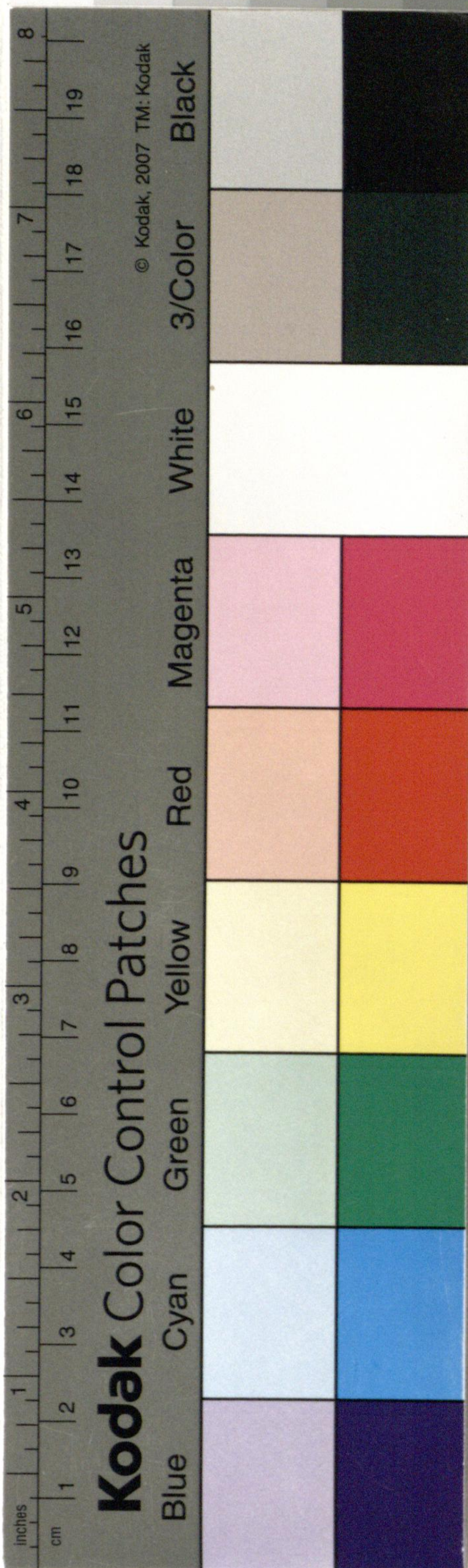
*[Faint, illegible handwritten text on aged paper]*

Kodak Gray Scale



© Kodak, 2007 TM: Kodak

A 1 2 3 4 5 6 M 8 9 10 11 12 13 14 15 B 17 18 19



In consequence of the difficulties in which we find ourselves involved, and our opinion of the impossibility of complying with the demands in the manner in which they are made by Her Britannic Majesty's Representatives upon us in reference to the claims of British subjects; We do hereby cede the Group of Islands known as the Hawaiian (or Sandwich) Islands unto the Rt. Hon. Lord George Paulet, captain of Her Britannic Majesty's Ship of war Casypport representing Her Majesty Victoria, Queen of Great Britain and Ireland - from this date, and for the time being; the said cession being made with the reservation that it is subject to any arrangement that may have been entered into by the Representatives appointed by us, to treat with the Government of Her Britannic Majesty; and in the event that no agreement has been executed previous to the date hereof, subject to the decision of Her Britannic Majesty's Government on conference with the said Representatives appointed by us, or in the event of our Representatives not being acceptable, or not having been acknowledged; subject to the decision which Her Britannic Majesty may pronounce on the receipt of full information from us and from the Rt. Hon. Lord George Paulet.

In confirmation of the above we hereby affix our names and seals this twenty fifth day of February, in the year of our Lord one thousand eight hundred and forty three, at Honolulu, Oahu, Sandwich Islands.

Signed in presence of

G. P. Budd

Richard A. Ingraham to  
the Govt.

(Signed) Kamehameha III (29)

(Signed) Kekaulaiki (28)

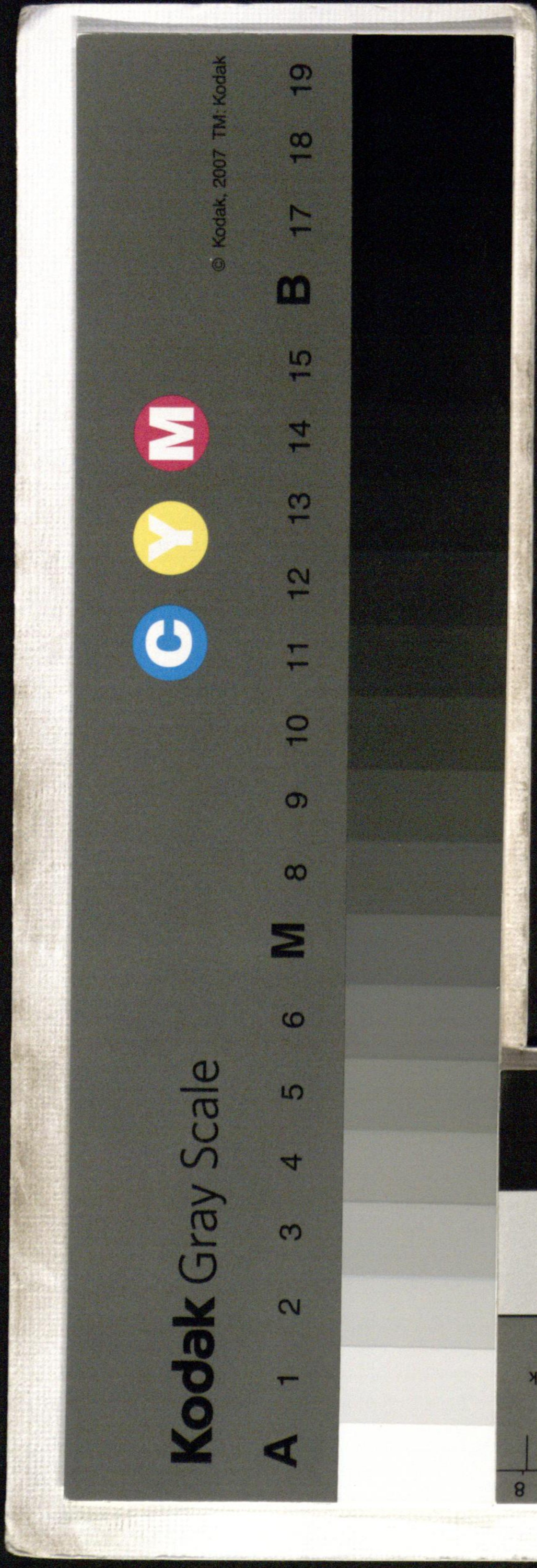
1843  
Copy of Letter of  
Gen. H. B. ...  
25 February



Blue  
Cyan  
Green  
Yellow  
Red  
Magenta  
Black

© Kodak, 2007 TM: Kodak

inches 1 2 3 4 5 6 7 8  
cm 1 2 3 4 5 6 7 8



Kodak Gray Scale

C Y M

A 1 2 3 4 5 6 M 8 9 10 11 B 12 13 14 15 16 17 18 19

© Kodak, 2007 TM: Kodak