

TRUE NORTH  
Scale: 1in.=30ft.

PROJECT  
AREA

OCEAN

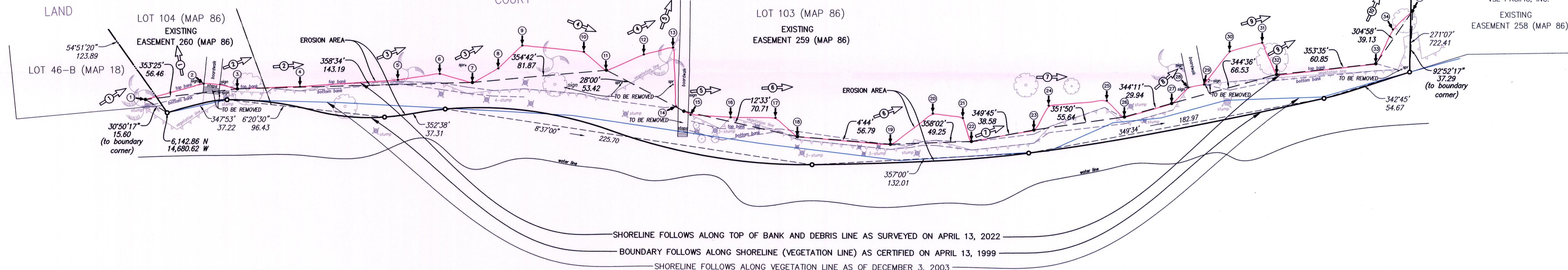
VICINITY MAP  
NOT TO SCALE

LOT 1  
GROSS AREA 34.646 ACRES  
LESS EROSION AREA 0.399 ACRES  
NET AREA 34.247 ACRES

APPLICATION

LOT 103 (MAP 86)  
EXISTING  
EASEMENT 259 (MAP 86)

LOT 102-A  
TMK: (2) 4-4-014: 005  
VSE PACIFIC, INC.  
EXISTING  
EASEMENT 258 (MAP 86)



OCEAN

- NOTES:
1. AZIMUTHS AND COORDINATES ARE REFERRED TO GOVERNMENT SURVEY TRIANGULATION STATION "MANINI".
  2. SHORELINE CERTIFICATION IS FOR SETBACK PURPOSES.
  3. DENOTES PHOTO SHEET NUMBER AND DIRECTION.
  4. DENOTES STAKE NUMBER.
  5. ITEMS SHOWN HEREON AS "TO BE REMOVED" WILL BE REMOVED PRIOR TO FINAL CERTIFICATION.

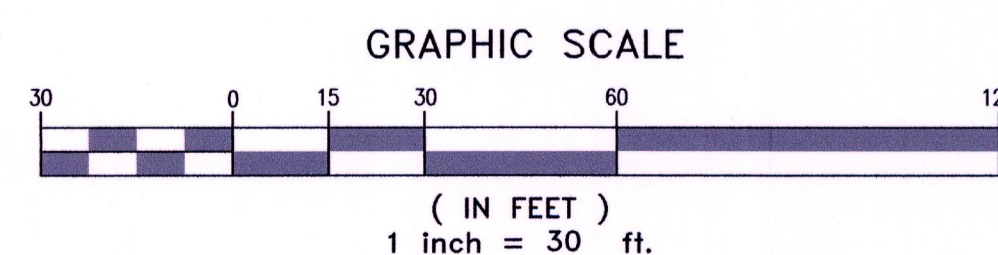
LEGEND  
spr      sprinkler

## SHORELINE CERTIFICATION OF LOT 1

### OF THE NORTH BEACH SUBDIVISION III

BEING ALSO PORTIONS OF ROYAL PATENT 4594, LAND COMMISSION AWARD 4241, APANA 3 TO KALUAKINI; ROYAL PATENT 6653, LAND COMMISSION AWARD 5121, APANA 1 TO KANE; ROYAL PATENT 7995, LAND COMMISSION AWARD 3689, APANA 2 TO MAUI; ROYAL PATENT 1684, LAND COMMISSION AWARD 5005, APANA 2 TO KEONI; PARCEL C, GRANT S- 15081 TO PIONEER MILL CO. LTD.; ROYAL PATENT 7661, LAND COMMISSION AWARD 76, APANA 2 TO WILLIAM SHAW; ROYAL PATENT GRANT 3559, LAND COMMISSION AWARD 5002, APANA 4 TO KAHANAUMAIAI; ROYAL PATENT 3939, LAND COMMISSION AWARD 6722-B APANA 1 TO MAI AND ALL OF ROYAL PATENT 4818, LAND COMMISSION AWARD 6601, APANA 4 TO PIIMOKU; LOTS 10-B-2-A AND 10-B-2-B OF LAND COURT APPLICATION 485 (MAP 15) AND LOTS 103 AND 104 OF LAND COURT APPLICATION 1744 (MAP 86).

SITUATED AT HONOKOWAI, KAAPALI, LAHIANA, MAUI, HAWAII



TMK: (2) 4-4-014: 006

Z:\2022\22-510\SURVEY\DWG\22510 SHORELINE.DWG

AUSTIN, TSUTSUMI & ASSOCIATES, INC. CIVIL ENGINEERS • SURVEYORS  
1871 WILU PA LOOP SUITE A • WAILUKU, MAUI, HAWAII 96793



THIS WORK WAS PREPARED BY ME  
OR UNDER MY SUPERVISION.

JUSTIN H. LAPP  
LICENSED PROFESSIONAL LAND SURVEYOR  
CERTIFICATE No. 12964  
EXP. DATE 04/2024

24" X 36" = 6 SQ. FT.

MAY 24, 2022  
JOB NO.: 22-510