



**HAWAI'I**  
STATE FOUNDATION on  
CULTURE and the ARTS

250 South Hotel St. Second Floor, Honolulu HI 96813

Phone: (808) 586-0300 Fax: (808) 586-0308

HawaiiSFCA@hawaii.gov www.sfca.hawaii.gov

**FB:** @hawaiisfca **IG:** @hawaii\_sfca **TW:** @hawaii\_sfca

Subscribe to our monthly email newsletter:

[www.sfca.hawaii.gov/newsletter](http://www.sfca.hawaii.gov/newsletter)

# 2021 ANNUAL REPORT

STATE FOUNDATION ON CULTURE AND THE ARTS



# BOARD OF COMMISSIONERS

*July 1, 2020–June 30, 2021*

**Lloyd Unebasami** • Chairperson

**Susan Browne** • At-Large

**Nalani Brun** • Kauaʻi County

**Jane Clement** • Hawaiʻi County

**Ronald Michioka** • City & County of Honolulu

**Karen Tiller Polivka** • At-Large

**Clyde Sakamoto** • Maui County

**Sherman Warner** • At-Large

**Allison Wong** • At-Large

## MISSION

To promote, perpetuate & preserve  
culture and the arts in Hawaiʻi.

## VALUES

**WE CELEBRATE** and emphasize the cultural  
richness and diversity of Hawaiʻi.

**WE BELIEVE** in equitable access, transparency,  
and community-based decision making.

**WE SHARE** in the responsibility to perpetuate the  
Native Hawaiian culture and the arts.

**WE VIEW** art and cultural engagement as critical to  
the educational, economic, and social well-being of  
individuals, communities, and the state of Hawaiʻi.





# YEAR IN REVIEW

Aloha,

Within these pages you will read about the State Foundation on Culture and the Arts' (SFCA) mission and how through diligent work, our team was able to transition successfully to a virtual environment, allowing us to continue to support organizations by administering funding for National Endowment for the Arts CARES Act, Biennium grants, and develop new initiatives with State cultural institutions and individuals through grants, acquisitions and exhibitions.

You will see how our values shape our efforts. You will read about our new initiatives supporting cultural preservation, exhibitions and engagement at Iolani Palace, Bishop Museum, Washington Place and the King Kamehameha Celebration Commission. You will see how more than 60 individuals from across the state participated in decision making for grant awards and artwork selection. You will learn about the education programming and grants that enrich the lives of nearly 60,000 students statewide. And, you will discover how we celebrate the diverse cultures of Hawai'i through our Folk and Traditional Arts work.

Behind all of the accomplishments you will find a story of passion, creativity and dedication to a thriving and vibrant Hawai'i, enriched by culture and the arts. Mahalo to the devoted board, staff, artists, organizations, volunteer panelists and innovators who are driven to create. We would also like to acknowledge the legislature and administration for their unwavering support during these uncertain times.

Going forward, our focus will be on adapting and improving the outreach and services of the agency in the new environment. We look forward to continuing stewardship of the SFCA in an exciting and ever changing future.

Sincerely,

**Lloyd Unebasami**  
Chairperson

**Jonathan Johnson**  
Executive Director

Photo on previous page: University of Hawai'i at Mānoa's Convergence Dance Theatre performance of "Transference" at HiSAM.



# SFCA PROGRAMS

## ART IN PUBLIC PLACES PROGRAM

- Public Art Collection
- Hawai'i State Art Museum (HiSAM)

## KING KAMEHAMEHA CELEBRATION COMMISSION

- Beginning July 1, 2021

## GRANTS & PROGRAMS

- Arts Education
- Community Arts
- Folk and Traditional Arts





# STRATEGIC PLAN

The SFCA goals are outlined in our current Strategic Plan which includes strategic priorities, vision, mission, and values. The plan is effective July 1, 2019 through June 30, 2023 as required by the agency's federal partnership with the National Endowment for the Arts. The priorities adopted are reflective of the input by the community, SFCA Commissioners and staff. In implementing the plan's priorities and accompanying strategies, SFCA intends to strengthen existing programs and services, pursue new initiatives, embrace a culture of transparency and accountability, as well as set and meet benchmarks that communicate our intentions clearly to our staff, partners, and the broader community.

## Vision

*We envision a thriving and vibrant Hawai'i enriched by culture and the arts.*

## STRATEGIC PRIORITIES



### CULTURE

Support, foster and celebrate the artistic expressions of Hawaii's diverse cultures and communities.



### ENGAGEMENT

Enhance public engagement in culture and the arts.



### EDUCATION

Strengthen arts education for all learners.



### THE ARTS

Enrich the public sphere through the arts.

# 2021 STRATEGIC PLAN IMPLEMENTATION HIGHLIGHTS

## CULTURE

- *Mai ho'ohuli i ka lima i ka luna*, an exhibit at HiSAM, features Hawaiian art curated by Native Hawaiians.
- Awarded Cultural Preservation Grants to Bishop Museum and Iolani Palace.
- Funding support for the 175th Anniversary of Washington Place.
- King Kamehameha Celebration Commission funding support for engagement around the Kamehameha I sculptures in Kohala and Honolulu.

## ENGAGEMENT

- National Endowment for the Arts CARES Act funds of \$427,500 was awarded to 37 non-profit arts and cultural organizations.
- Development and administering the grant cycle and panel review for NEA American Rescue Plan funding of \$759,500 to be distributed to non-profit arts and cultural organizations and individual artists in FY22.
- Launched redesigned website for SFCA.

## EDUCATION

- Expanded and diversified Teaching Artist Roster.
- Developed Teaching Artist Mentor Program.
- Artists in the Schools awarded grants to 113 schools statewide.

## THE ARTS

- Purchased works of art from SFCA sponsored call for art created during the pandemic and launched exhibition *For Walls*, a COVID inspired exhibition at HiSAM reflecting on confinement during the pandemic.
- Wall-to-Wall Studios Inc. led HiSAM in brand audit.
- Commissioned works of art initiated for Kapi'olani Community College Culinary Arts Building, University of Hawai'i—West O'ahu Gateway and Women's Correctional Center in Kailua (O'ahu);
- Completed Commissioned work of art at Kea'au Elementary School (Hawai'i Island).







# COMMUNITY MAHALO!

Informed community panelists make decisions at the SFCA regarding grants, artwork commissions, art acquisitions and judging student competitions.

With the dedication and expertise of these volunteers, we make informed decisions that result in effective programming.

Mahalo to all of the individuals who participated in the decision making of the SFCA in Fiscal Year 2021.

## HAWAI'I ISLAND

Maja Clark  
Melissa Geiger  
Meidor Hu  
Gerald Lucena  
Michael Marshall  
Brenda McConnell  
Jennifer Owen  
Margo Ray

## KAUA'I

Sally French  
Terry Liu  
Jill Weiner

## MAUI

Neida Bangerter  
Judy Bisgard  
Daria Boone  
Jen Cox  
Maile Davis  
Renee Hammer  
Alicia Jacobson  
David Johnston  
Linda Marrs  
Loralee Mauri  
Hoku Pavao  
Moira Pirsch  
Lisa Schattenburg-Raymond  
Molly Schettewi  
Michael Takemoto  
Inger Tully

## O'AHU

Lei Ahsing  
Carolann Biederman  
Donna Blanchard  
Jeffery Boeckman  
Mark Branner  
Drew Broderick  
Sean Browne  
Gaye Chan  
Eric Chang  
Lisa Chow  
Daniel Chun  
Georgianna DeCosta  
Sue Deuber  
Robbie Dingeman  
Rebecca Dunning  
Nicole Fernandez  
Pat Gambi  
Scott Groeniger  
Sam Guerrero  
Erik Haines  
Jaimey Hamilton  
Clark Hatch  
Jennifer Higaki  
James Hisano  
Gina Ichiyama  
Amy Ige  
Grant Itomitsu  
Carl Jennings  
Jay Junker  
Denise Karabinus  
Douglas Kaya  
Steven Kean  
Ed Kenney

Kapulani Landgraf  
Ann Latham  
Vivien Lee  
Zoe Liu  
Maile Loo  
Katherine Love  
Antoinette Martin  
Mike McCartney  
Meleanna Meyer  
Ronald Michioka  
Rick Mills  
Darin Miyashiro  
Marcia Morse  
Allyson Nakamoto  
Lisa Nakandakari  
Deborah G. Nehmad  
Natalie Nimmer  
Greg Northrup  
Jeff Pagay  
Louise Pagotto  
Patrice Perrin  
Michael Pili Pang  
Maika Pollack  
Maya Portner  
Atis Puampai  
Kristin Remington  
John Richards  
Terry Savage  
April Sham  
Hannah Shun  
Jamie Simpson Steele  
Timothy Slaughter  
Amanda Smith  
Maya Soetoro-Ng

Joseph Stepec  
Sharon Sussman  
Eric Tanaka  
Yoshimi Tei Soo Mei  
Margo Vitarelli  
Kip Wilborn  
Heather Williams  
Tracey Wong  
Pauline Worsham  
Keith Yamamoto  
Lynn Young

We believe in equitable access, transparency, and community based decision making.

# STAFF COHORT STRATEGIC PLAN IMPLEMENTATION & GOALS

- 1) Deepen engagement and participation in culture and the arts among priority communities and populations in Hawai'i.
- 2) Extend high-quality arts learning opportunities to students in and out of school time and to people of all ages in Hawai'i.
- 3) Amplify Hawaiian cultural arts, history, and heritage, and support communities to advance cultural knowledge, build cultural capacity, and preserve cultural legacies.
- 4) Enhance opportunities available to experience culture and the arts statewide.
- 5) Innovate to build diverse audiences for the arts across Hawai'i.

## FY2022

### CULTURE

- Build cultural capacity and public awareness for three Native Hawaiian practices that are not robust; hula ki'i, 'ūkēkē and ulana 'ie.
- Administer \$1,346,000 in Coronavirus State Fiscal Recovery Funds of American Rescue Plan Act to Bishop Museum and Iolani Palace.

### ENGAGEMENT

- Develop support areas including web presence for King Kamehameha Celebration Commission, newly added to SFCA program structure in FY22.
- Distribute \$144,500 American Rescue Plan Act to Individuals awards to 20 Individual Artists and Cultural Practitioners statewide for public impact projects.

### EDUCATION

- Restructure State Art Museum Education Program.
- Continue to increase and diversify Teaching Artist Roster.
- Develop and launch Teaching Artist Mentorship Program.

### THE ARTS

- Host Honolulu Triennial at the State Art Museum inclusive of exhibitions and pop-up chefs in the Café area at HiSAM.
- Deploy Capitol Modern at State Art Museum to increase public awareness and engagement in the arts.



## FY2023

### CULTURE

- Explore how to further engage cultural practitioners statewide.
- Increase acquisition of works of art by Native Hawaiian artists.

### ENGAGEMENT

- Increase partnership with the Statewide Cultural Extension Program to reach underserved communities including public housing and homeless shelter children and youth and corrections through in person and virtual experiences.
- Initiate work on new SFCA Strategic Plan.

### EDUCATION

- Expand opportunities for arts residencies in the public and charter schools.
- Adopt a new strategic plan for the Arts First Partnership.

### THE ARTS

- Deploy public research database of public art collection.
- Increase the number of venues and artists not previously supported.







# WHY ARTS EDUCATION MATTERS

**The arts help kids to succeed in and after school.**

Students who receive arts education have stronger social skills, improved motivation to learn, and more esteem for themselves and their peers. The arts encourage the ability to engage with new ideas and consider multiple perspectives. Arts education helps to create a positive school environment in which learning and human development can occur.

(Resources: National Endowment for the Arts; Arts Education Partnership; National Assembly of State Arts Agencies/ Arts Education Partnership.)

“The arts are education. They stretch you as a human being, lift up the human spirit, and help us become better people.”  
— Masaru “Pundy” Yokouchi, Founding Chairperson, SFCA



Super Saturday activity at HiSAM.

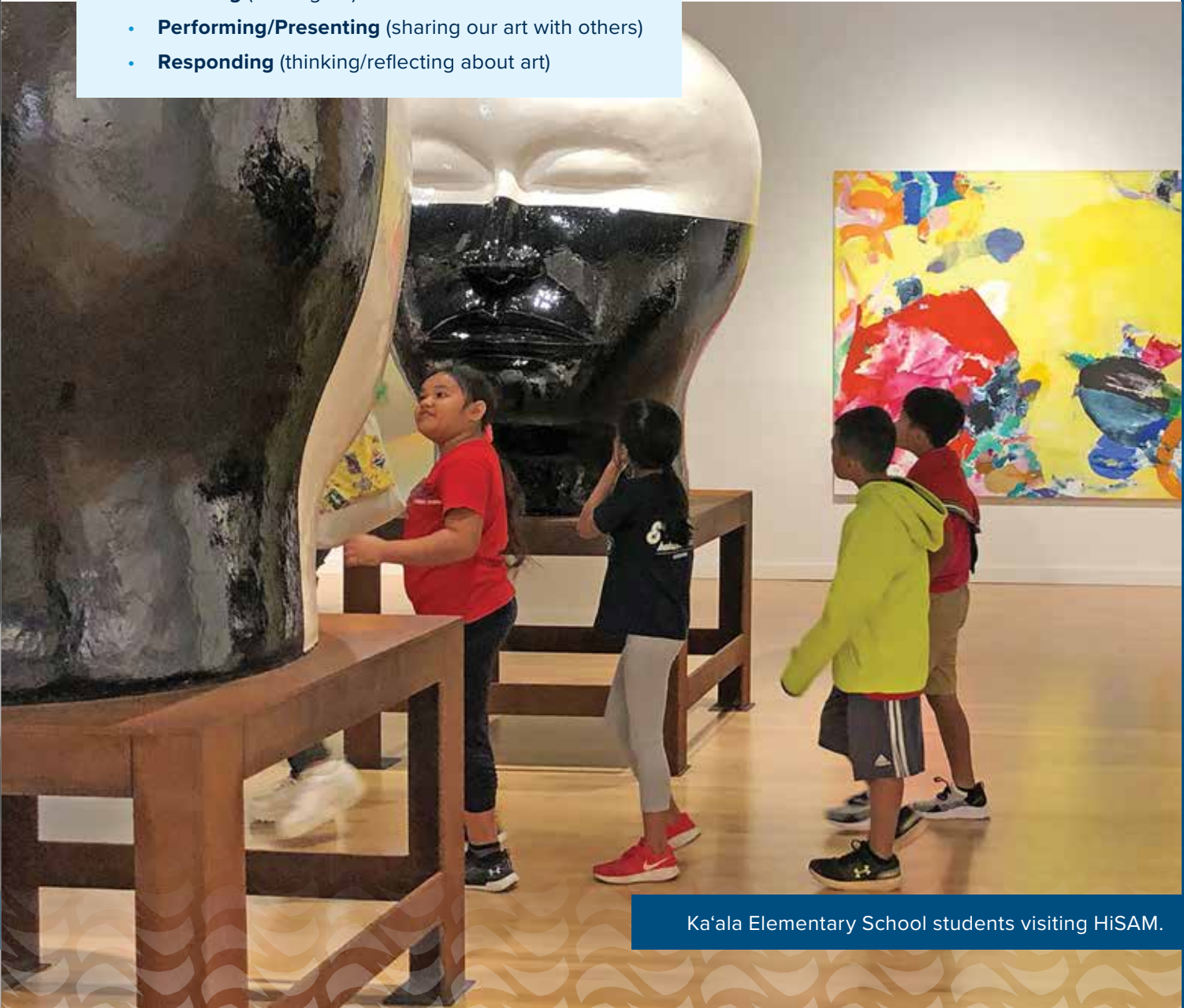
# ARTS EDUCATION FOR ALL LEARNERS

Arts education provides skills critical to 21st-century success: critical thinking, creative problem-solving, collaboration, communication, and information literacy.

In a global economy that is driven by knowledge and ideas, arts education is a necessity. The best paying jobs require workers with creativity, higher-order thinking and communication skills — companies are increasingly looking for these qualities in the individuals they recruit.

SFCA's Arts Education programs engage participants in the three artistic processes of C.P.R.:

- **Creating** (making art)
- **Performing/Presenting** (sharing our art with others)
- **Responding** (thinking/reflecting about art)



Ka'ala Elementary School students visiting HiSAM.







## SFCA PROVIDES ARTS TO SCHOOLS

**Arts education helps close achievement gaps for disadvantaged students.** Research confirms that students from low-income families, English language learners and students with special needs all do better in arts-infused schools than in schools that do not have robust arts programming as a meaningful part of the curriculum. (More: National Endowment for the Arts; President's Committee on the Arts and the Humanities; Arts Education Partnership). **The arts keep kids in school.** Arts education programs can help to reduce dropout rates, increase student engagement and raise educational attainment levels.

(References: Center for Arts Education; National Assembly of State Arts Agencies/Arts Education Partnership.)

The SFCA provides various arts education programs and opportunities to State of Hawai'i Department of Education public and charter schools:

- Artists in the Schools artist residencies for grades K–12, statewide
- Art Bento Museum Education activities at HiSAM for grades 2–6, O'ahu
- Student exhibitions at HiSAM for grades K–12, statewide
- Poetry Out Loud national poetry recitation competition for grades 9–12, statewide
- Biennium Grants to Organizations for Arts Education for grades pre-K–12, statewide

*"When students have access to learning experiences in the arts in the home, school, and community, they are better prepared for success in school, work, and life."*

— U.S. Conference of Mayors

## ARTISTIC TEACHING PARTNERS

**Students engaged in the arts perform better academically.** Numerous linear research studies have documented that students who receive arts education exhibit improvements on standardized test scores and in their overall performance in other subjects, including reading and math. (References: National Assembly of State Arts Agencies/Arts Education Partnership; The College Board; Arts Education Partnership; President's Committee on the Arts and the Humanities.)

The SFCA's roster of Artistic Teaching Partners provides schools with highly qualified teaching artists. Artistic Teaching Partners stay current with best arts education practices through ongoing training and professional development.

In 2021, the roster was updated with several new teaching artists and an expansion of teaching categories (including Cultural Practices and Food Sustainability).

In addition, this year the SFCA offers nine of the eighteen new teaching artists on the roster to take part in an Emerging Teaching Artist Program. This program partners Veteran Teaching Artists with Emerging Teaching Artists, offering one-on-one support for curriculum development, lesson planning, and grant writing for their first year on the roster.



First Friday art activity.



"The Carp Who Would Not Quit," Honolulu Theatre for Youth (HTY). HTY productions reach students and families statewide through touring, television, and the Internet.







We share in the responsibility to perpetuate the Native Hawaiian culture and the arts.



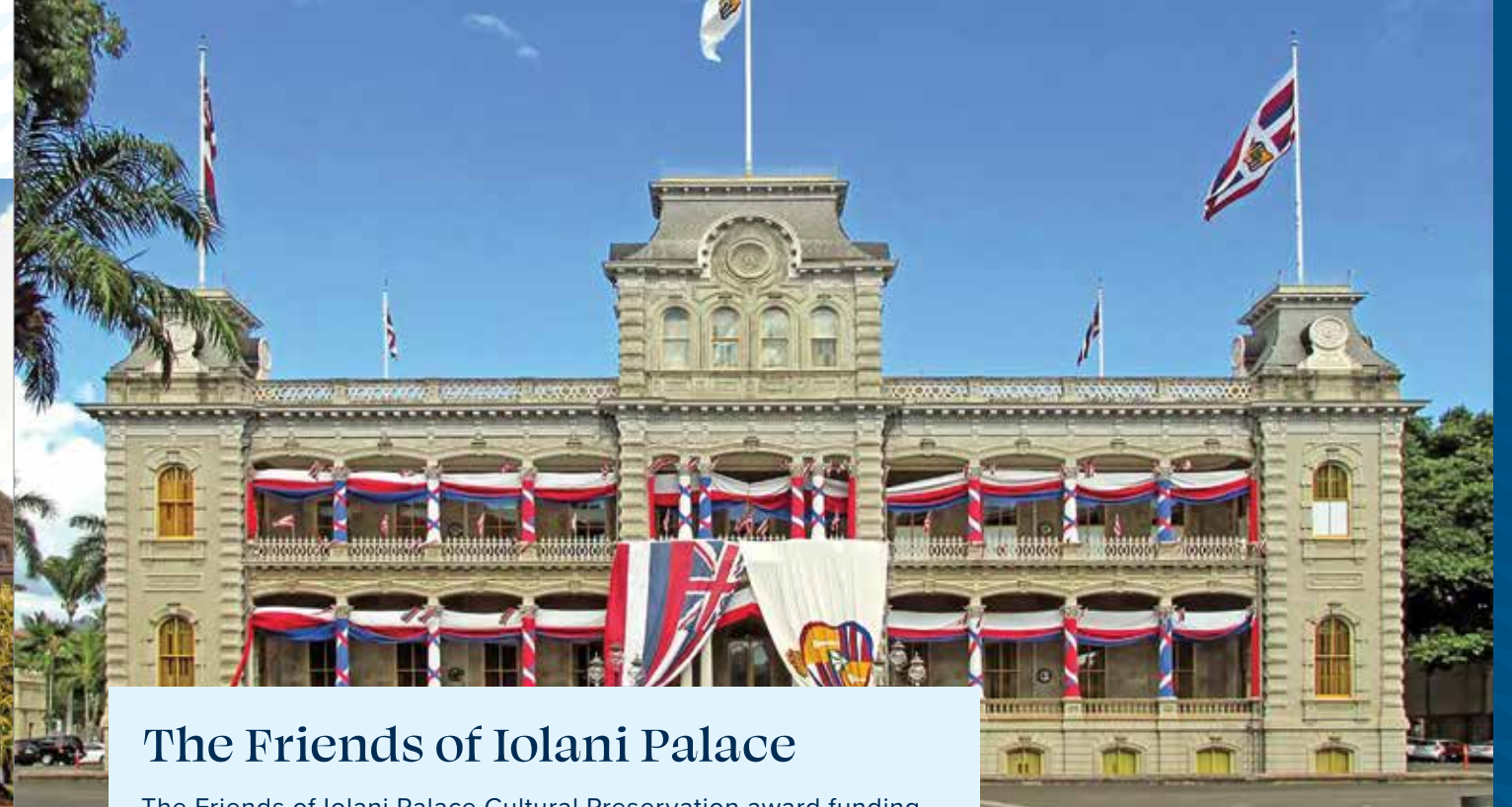
## State Cultural Resources

Recognizing the economic pressures on Hawaii's cultural institutions due to COVID-19, the SFCA created a Cultural Preservation Initiative to support two State cultural institutions whose collections include irreplaceable cultural resources of Hawai'i.

Contracts were issued in support of Cultural Preservation at the State of Hawai'i Museum of Natural and Cultural History (Bishop Museum) and the State of Hawai'i Museum of Monarchy History (Iolani Palace).

## Bishop Museum

Bishop Museum Cultural Preservation award supported utility costs associated with HVAC (Heating, Ventilation and Air Conditioning), to maintain optimal temperature and humidity essential to the care and preservation of 25 million objects and more than a century of research and collection.



## The Friends of Iolani Palace

The Friends of Iolani Palace Cultural Preservation award funding supported conservation treatment on both King David Kalākaua and Queen Julia Na-pela-kapu-o-Kaka'e Kapi'olani's thrones and provided crucial support in keeping the HVAC system operating which is critical to the preservation of interior objects at Iolani Palace.

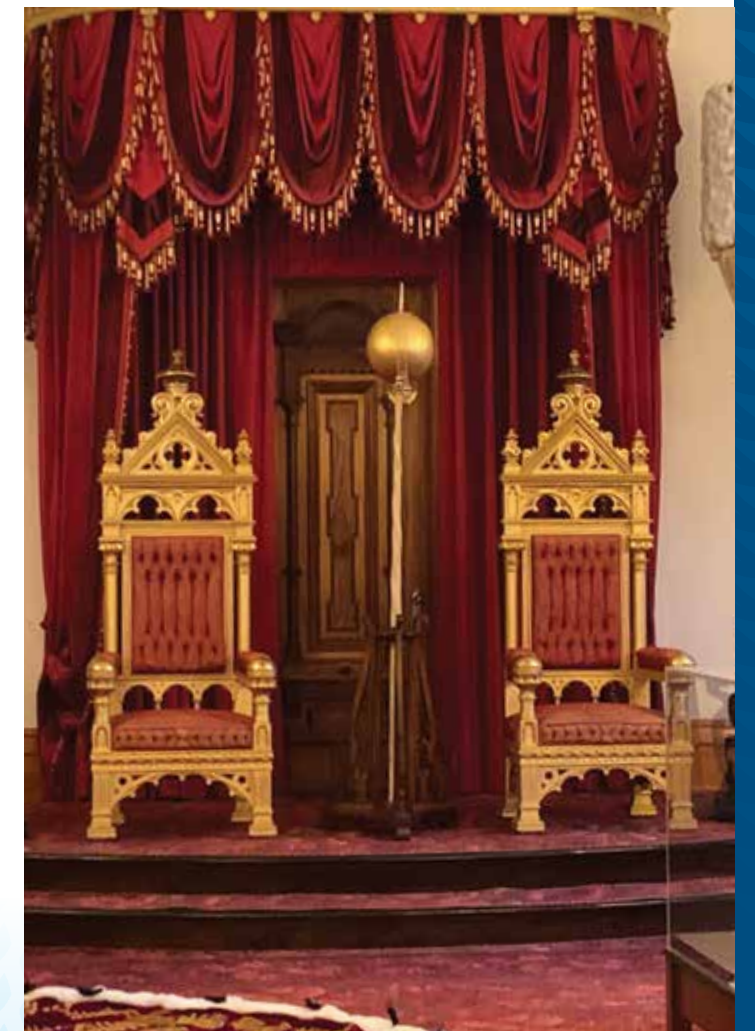
## 175th Anniversary of Washington Place

Funding support was provided for the 175th Anniversary of Washington Place exhibition at Washington Place, celebrating historic sites.

## King Kamehameha Celebration Commission

The SFCA contracted with KKCC (King Kamehameha Celebration Commission) in support of engagement around the King Kamehameha I sculptures in place in Kohala and Honolulu. KKCC engages the public annually through the King Kamehameha Day Celebrations. SFCA contracts annually for the conservation of these monuments.

For a list of Native Hawaiian projects funded by the SFCA for more than 50 years, please visit the SFCA website: [sfca.hawaii.gov](https://sfca.hawaii.gov).







# FOLK & TRADITIONAL ARTS CULTURE GRANTS

Culture grants provide access to deep and sustained learning about different living cultures in the State. **Apprentice Mentoring Grants** support intensive advanced training in a cultural art form or practice, taught by Hawaii's most masterful cultural practitioners. One of the objectives is to train more practitioners in particular cultural art forms or lineages and to train the next generation of teachers to carry on the tradition. In FY2021, eight apprentice mentoring team projects were fully funded and implemented, representing three different living cultures and seven living traditional arts practices.

See page 33 for a full list of living cultures projects.

We celebrate and emphasize the cultural richness and diversity of Hawai'i.

## Weaving Past, Present, & Future: How the Na Akua Akea Exhibit Celebrates & Inspires A Lahui

"This practice, this art is not for Hawaiians only," says Kumulā'au. "This is for all of us. I just want to share that every person that learns this art, whether you are Kanaka Hawai'i or you are Kanaka — wherever you are from, our kupuna are smiling. Our ancestors are smiling and very proud and happy. That all of you guys have taken on the kuleana the responsibility the willingness to do this kind of work that we do. Whether it's hala, or 'ie 'ie, or any type of work of our kupuna. They are very happy because what they did, that we practice and perpetuate today, is not going to die. It's going to holomua (progress) because of all of you."

**Maui Time Magazine**

October 2019, volume 23, issue 19

Jen Russo

<https://mauitime.com/culture/history/weaving-past-present-and-future-how-the-na-akua-akea-exhibit-celebrates-and-inspires-a-lahui/>



"The 'Live from the Empty Palace Theater' platform allowed the artists to have a venue at the Palace and have their performances streamed online. The overwhelming feedback is that the community GREATLY appreciates the continuance of performances."

— Friends of the Palace Theater

## BIENNIUM GRANTS

Biennium Grants provides funding for organizations who support programs and projects that advance the arts, culture, and creativity in the lives of the people of Hawai'i. \$480,100, was distributed throughout the State to 37 non-profit organizations offering culture and arts programs, many of which reach underserved and rural areas, including neighbor islands.

All eligible applications were reviewed by volunteer panelists who review and score applications based on three criteria: proposed activities, qualifications, and the need, benefit, impact, and good use of public funds. Panelists are selected per Hawai'i Administrative Rules, Chapter 92. Panels are composed of arts professionals who represent a broad range of artistic and cultural viewpoints and are qualified by their activities, training, skills, and/or experience in one or more forms. Their expertise and leadership in Hawaii's culture and arts community are a critical component of the Biennium Grants process.

In response to the ongoing COVID-19 pandemic, Biennium Grants FY2021 recipient Friends of the Palace Theater utilized the awarded funding to support essential staff salaries, allowing the Palace Theater to expand their virtual footprint and produce the online series "Live from the Empty Palace Theater." The series showcases performances from Big Island musicians and artists.





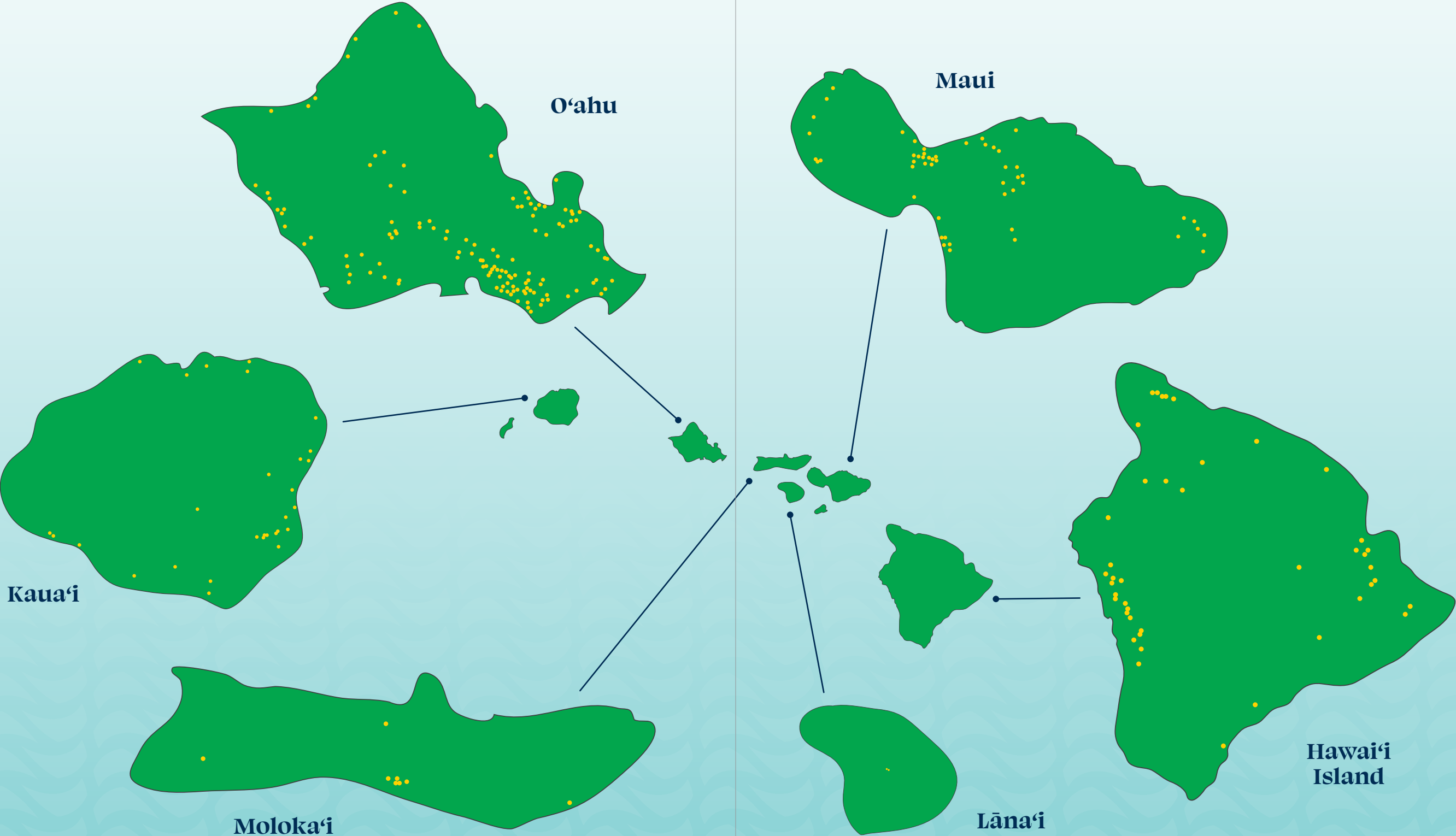


# COMMUNITY ENGAGEMENT

Maps are reflective of grant and project locations statewide for the SFCA.  
The yellow dots indicate the locations of the grant or project.

GRANT & PROJECT DETAIL

 SFCA Grants & Project Locations







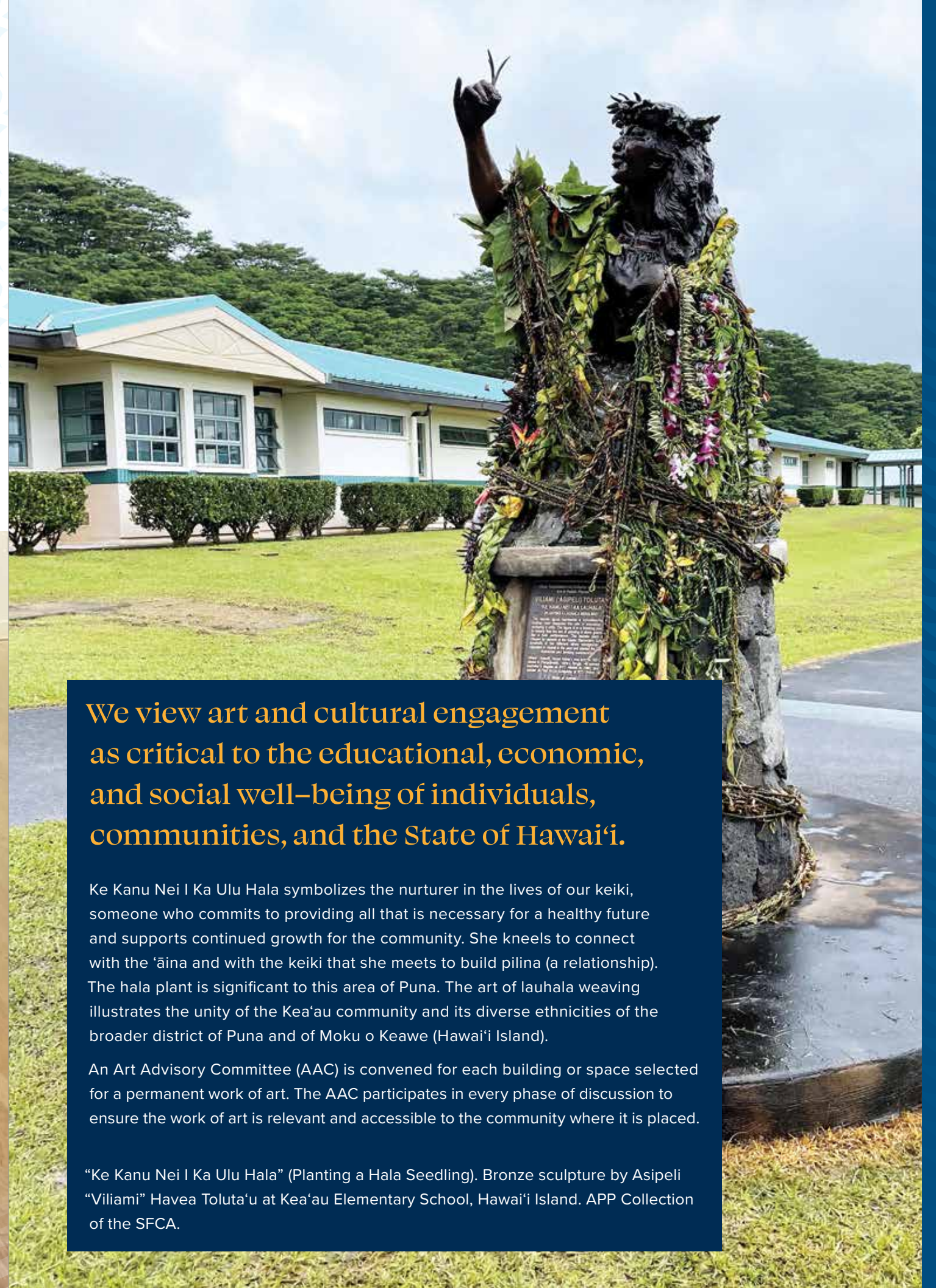
# ART IN PUBLIC PLACES

The objectives of the **Art in Public Places (APP) Program** are to enhance the environmental quality of public buildings and spaces throughout the State for the enjoyment and enrichment of the public; to cultivate the public’s awareness of visual arts in all media, styles, and techniques; to contribute to the development and recognition of a professional artistic community; and to acquire, interpret, preserve, and display works of art expressive of the Hawaiian islands, the multicultural heritages of its people, and the creative interests of its artists.

## Student Art

The Foundation, in consultation with the Department of Education, the University of Hawai’i, private schools, and community art groups, shall establish a program for the recognition and display of student artwork. Student artwork shall mean any work of art made by any student attending any elementary, intermediate, high school, college, or university in the State.

Student artist Kota Maiwela holding his artwork “My Culture, My Family and Me.” Kota says “art is a great thing that you should make.” Learn more about the 2021 Young Artists of Hawai’i competition and exhibition in this short video: [vimeo.com/556441955](https://vimeo.com/556441955).



**We view art and cultural engagement as critical to the educational, economic, and social well-being of individuals, communities, and the State of Hawai’i.**

Ke Kanu Nei I Ka Ulu Hala symbolizes the nurturer in the lives of our keiki, someone who commits to providing all that is necessary for a healthy future and supports continued growth for the community. She kneels to connect with the ‘āina and with the keiki that she meets to build pilina (a relationship). The hala plant is significant to this area of Puna. The art of lauhala weaving illustrates the unity of the Kea’au community and its diverse ethnicities of the broader district of Puna and of Moku o Keawe (Hawai’i Island).

An Art Advisory Committee (AAC) is convened for each building or space selected for a permanent work of art. The AAC participates in every phase of discussion to ensure the work of art is relevant and accessible to the community where it is placed.

“Ke Kanu Nei I Ka Ulu Hala” (Planting a Hala Seedling). Bronze sculpture by Asipeli “Viliami” Havea Toluta’u at Kea’au Elementary School, Hawai’i Island. APP Collection of the SFCA.







# HAWAI'I STATE ART MUSEUM

**Hawai'i State Art Museum (HiSAM)** is a free public art museum within the Art in Public Places Program in downtown Honolulu featuring exhibitions curated from the State's Art in Public Places Collection and student exhibitions. Located adjacent to the State Capitol, Iolani Palace, and the State Library, HiSAM is an educational teaching tool for students, teachers, visitors and the public. HiSAM has four galleries, a Sculpture Garden as well as a classroom, Multipurpose Room for activities and lectures, popular cafe, and a front lawn that can be used for museum or private events. It is an inspiring and educational place for residents, families, school children, teachers, artists, visitors, and the public.

HiSAM is a powerful resource for maximizing public art access; and promotes lifelong learning. The museum is free for everyone and open Monday–Saturday 10 am–4 pm.



University of Hawai'i at Mānoa students from the Art Department displayed their Koinobori celebrating Children's Day at HiSAM.



HiSAM re-opened to the public with safety measures in place, including temperature checks and collecting visitors contact information for contact tracing, if needed. “Happenings at HiSAM” included socially distanced pop-up events. New exhibitions at HiSAM opened including “Mai ho’ohuli i ka lima i luna,” an exhibition curated by and featuring contemporary Hawaiian artists, and “For Walls,” an exhibition reflecting on confinement during the pandemic.

The intention of the State Art Museum is to explore creative and dynamic ways to support artists and their diverse art forms. This is accomplished through public programming, museum education, “Happenings at HiSAM” and the engagement of students. We are continuously evolving in becoming even more inclusionary and accessible to the needs of our community, while offering a welcoming space for creatives to collaborate, share and encourage one another in the arts.

Performing Arts at HiSAM: University of Hawai'i at Mānoa Convergence Dance Theatre in a live performance of their online collaboration, “Transference” with HiSAM.







# ART IN PUBLIC PLACES PUBLIC ART COLLECTION

The State of Hawai'i has a collection of nearly 7,000 works of art that are exhibited statewide in public schools, libraries, airports, hospitals and State office buildings. The works of art are for the most part considered relocatable and are displayed on a rotational basis in State buildings, HiSAM and used in traveling exhibitions. The APP Collection is managed to ensure accountability, accessibility, preservation and appropriate use with over 65% of the collection on display.

Works of art are purchased through a community process where an Acquisition Award Selection Committee (AASC) is convened to select works of art for purchase from public galleries, studios of master artists, gifts, and other approved sources. The AASC follows selection criteria to recommend artwork to the SFCA Board of Commissioners for approval to purchase.

## Art At the Capitol

"Art at the Capitol" was held as an online event this year, with state legislators interviewed by SFCA Executive Director Jonathan Johnson in a series of forty-five short videos, with the legislators speaking on the importance of government support of the arts. The videos can be viewed on the Art at the Capitol Hawai'i Facebook Page: [facebook.com/ArtAtTheCapitolHawaii](https://facebook.com/ArtAtTheCapitolHawaii) and YouTube channel: [youtube.com/user/ArtAtTheCapitolHI](https://youtube.com/user/ArtAtTheCapitolHI).

In the evenings, a projection of images and the words "culture," "art," "education" and "access" were projected on the Beretania and Punchbowl construction barricades around the Capitol water feature. A video of this projection is also on the SFCA website: [sfca.hawaii.gov/Art-At-The-Capitol-2021](https://sfca.hawaii.gov/Art-At-The-Capitol-2021).

"Citiscap" (detail), Roen Hufford, kapa. SFCA Art in Public Places Collection. Purchased from the Kahilu Theatre (Kamuela, Hawai'i Island), "Kahilu Theatre 5th Annual Juried Exhibition."



## Art in Public Places

The AASC continued to attend exhibitions and select works of art for the Art in Public Places Collection of public art virtually, purchasing 60 works of art from 10 venues this year. The SFCA also sponsored a call for art created during the pandemic. The goal of the call was to support artists financially and promote the valuable role artists play in this time of global crisis, particularly within the State of Hawai'i, and to document artists' response to the pandemic, economic and civil unrest. Artists play a unique role in telling

the story of place and experience providing the viewer insight and hope. SFCA considered works that were relevant to this crisis and the expectation that artists were creating work based on their experiences during this time.

APP's Museum Without Walls program remained in effect including installation and rotation of works of art from the APP Collection to State Buildings including the State Capitol. Development of and transition to is under way to a new public research database of the collection set to go live in FY22.

"Persevere" was created in response to the COVID-19 pandemic. It depicts a Japanese Daruma, which is a papier-mâché doll with a weighted bottom. It is a symbol of determination and perseverance since the weight at the bottom gives the doll the ability to return immediately upright after being pushed or knocked over. Kurokawa explains, "While my Daruma emerges from the shadows, it is protected by plastic and sealed with a gold twist tie, much like the protective masks and gear we need to wear today. Although shielded, we still have the ability to overcome and rise again. The second eye will be filled and we will persevere."

"Persevere" (detail), Kirk Kurokawa, 2020, oil on board painting. SFCA Art in Public Places Collection.







# ARTS FIRST PARTNERS

The Hawai'i State Legislature enacted ACT 80 in 1999 which called for Hawaii's major stakeholders in arts education to revise the State's Fine Arts standards and develop a statewide Strategic Plan for Arts Education. In 2001, ACT 306/01 passed into law (SFCA's HRS Chapter 9) formally naming the ARTS FIRST Partners and mandating the implementation of the Strategic Plan.

## 2021–2025 Strategic Plan Mission & Vision

**MISSION:** To collectively advance diverse, equitable and quality arts education in Hawai'i through advocacy and access.

**VISION:** A vibrant, arts-enriched learning culture in which

- Arts are diverse, equitable and inclusive;
- The Arts are subjects in schools as well as integrated throughout subjects in schools; and
- Arts support community, community supports arts.

### STATE & COUNTY FUNDS

\$388,000 (78%)

### FEDERAL FUNDS

\$4,000 (1%)

### PRIVATE FUNDS

\$103,047 (21%)

The ARTS FIRST Partners NCAS Adoption Group is focusing on supporting the pathway towards the Board of Education adopting the National Core Arts Standard and received \$40,000 from the Hawai'i Community Foundation to assist the roll out of the National Core Arts Standards. The ARTS FIRST Partners Cultural Bridge Group is dedicated to spreading and implementing culturally responsive and sustaining practices in the arts education sector through professional development opportunities.

ARTS FIRST Partners includes the State of Hawai'i Department of Education; Hawai'i Association of Independent Schools; College of Arts and Humanities—University of Hawai'i—Mānoa; College of Education—University of Hawai'i—Mānoa (UHM COE); State Foundation on Culture and the Arts (SFCA); Hawai'i Arts Alliance; Holualoa Foundation for Arts and Culture (Donkey Mill Art Center); Honolulu Theatre for Youth; Maui Arts & Cultural Center; Molokai Arts Center; and the PA'I Foundation. Past affiliates include the Lili'uokalani Trust.

## ARTS FIRST PARTNERS REVENUES

TOTAL FUNDS: **\$495,047**

For a full list of ARTS FIRST Partners accomplishments, please visit the SFCA website: [sfca.hawaii.gov/fy2021-arts-first-partners](https://sfca.hawaii.gov/fy2021-arts-first-partners)

## 2020–2021 Budget

### WORKS OF ART SPECIAL FUND APPROPRIATION

\$5,573,625 (77%)

### FEDERAL FUND

\$727,600 (10%)

National Endowment for the Arts  
Priorities of Education, Folk and  
Traditional Arts and Underserved

### STATE GENERAL FUND

\$956,442 (13%)

### BIENNIUM GRANTS GRANTEE MATCH

\$4,507,395 (91%)

### SCHOOL SHARE

\$80,224 (2%)

### PRIVATE (HAWAII COMMUNITY FOUNDATION)

\$225,235 (5%)

### ARTS FIRST PARTNERS MATCH (PROFESSIONAL DEVELOPMENT FOR CLASSROOM TEACHERS & SUMMER INSTITUTES)

\$116,053 (2%)

- Hawai'i Arts Alliance (Statewide Summer Institute) **\$29,525**
- Honolulu Theatre for Youth (Professional Development for Classroom Teachers) **\$39,047**
- Maui Arts & Cultural Center (Maui Summer Institute) **\$47,481**

## ANNUAL BUDGET

TOTAL BUDGET: **\$7,257,667**

## MATCHING GRANT SUPPORT

TOTAL GRANT: **\$4,928,907**

\*Budget of appropriation budget prior to 10% restriction on spending by administration.







# SFCA FINANCIAL SUMMARY

Department of Accounting & General Services, State of Hawai‘i.  
Fiscal Year Ended June 30, 2021

## REVENUES

STATE	
Executive Allotment .....	\$956,553.00
Works of Art Special Fund (Expenditure Ceiling*) .....	\$5,573,625.00
Works of Art Capital Improvement Project Fund .....	\$33,566.28
Subtotal .....	\$6,563,744.28
FEDERAL	
National Endowment for the Arts	
• State Partnership Agreement .....	727,600.00
• American Rescue Plan Act (Allotted in FY22) .....	759,500.00
Subtotal .....	\$1,487,100.00
PRIVATE CONTRIBUTIONS	
Carryover From Previous Year .....	102,922.54
Hawaii Community Foundation	
• Donation to Artists in the Schools .....	2,000.00
Investment Pool Earnings/Card Rebate .....	794.26
Subtotal .....	\$105,716.80
TOTAL REVENUES .....	\$8,156,561.08

\*Actual Revenue to the Works of Art Special Fund.....\$15,520.00

\*1% construction amounts for Works of Art were not deducted/transferred per Governor’s Budget Execution Policies for Fiscal Year 2021. FY2021 reflects a significant decrease in 1% revenue for the Works of Art Special Fund due to an unintentional consequence of CIP Bill, Act 40, resulting in SFCA only receiving \$16,000 of 1% revenue for FY21. Comptrollers Memorandum CM-2021-09: Assessment for Works of Art, HRS Section 103-8.5 was issued on June 28, 2021. The memo provides guidance and instructions regarding transfers to the Works of Art Special Fund from Capital Improvement Program appropriations beginning July 1, 2021.



## EXPENSES

SFCA ADMINISTRATION		\$550,000.62
Personnel .....		430,952.00
Operating .....		119,048.62
PROGRAM GRANTS		\$1,002,415.00
State .....		726,915.00
Federal — National Endowment for the Arts .....		275,500.00
• Basic State Plan .....		119,600.00
• Arts in Education .....		34,800.00
• Underserved Communities .....		81,100.00
• Poetry Out Loud .....		20,000.00
• Folk Arts Partnership .....		20,000.00
ART IN PUBLIC PLACES PROGRAM		\$3,767,509.85
Commissioned Works of Art .....		350,688.64
Relocatable Works of Art .....		262,610.80
• Acquisitions .....		216,972.62
• Exhibition Services .....		45,638.18
Works of Art Conservation .....		220,983.09
Registration .....		28,272.24
Art in Public Places Administration .....		1,759,594.63
• Personnel .....		1,458,205.08
• Operating .....		191,639.66
• Special Fund Assessments by Dept. of Budget & Finance .....		109,749.89
Hawai‘i State Art Museum .....		811,112.45
Artists in the Schools .....		334,248.00
DESIGNATED PROGRAMS		\$4,175.00
Operating .....		4,175.00
PRIVATE CONTRIBUTIONS		\$5,173.37
Hawai‘i State Art Museum .....		5,173.37
TOTAL EXPENSES .....		\$5,329,273.84







EXCESS OF REVENUE OVER EXPENSES

STATE	
General Fund Lapsed .....	\$811.09
General Fund Lapsed Due to Restrictions by Administration .....	\$95,644.00
Works of Art Special Fund Reversion .....	\$1,806,115.15
Works of Art Capital Improvement Project Fund .....	\$33,566.28
<i>(Carryover from previous year, fund established prior to Works of Art Special Fund)</i>	
FEDERAL	
National Endowment for the Arts Reversion .....	\$790,607.29
• Basic State Grant .....	31,107.29
• American Rescue Plan Act (Allotted in FY22) .....	759,500.00
PRIVATE CONTRIBUTIONS	\$100,543.43
Carryover From Previous Year .....	\$99,749.17
Investment Pool Earnings/Card Rebate .....	\$794.26
TOTAL REVENUES OVER EXPENSES .....	\$2,827,287.24



APPENDIX A: ART IN PUBLIC PLACES PROGRAM

The State Foundation on Culture and the Arts was established by the Hawai'i State Legislature in 1965 as the official arts agency of the State of Hawai'i. The concept of setting aside one percent of construction appropriations to provide a funding base for the acquisition of works of art set a national standard in 1967 when Hawai'i became the first state in the nation to pass such legislation. The 1989 revision of the law created the Works of Art Special Fund, a non-lapsing account into which all funds set aside for works of art are deposited and from which expenditures for purposes consistent with Section 103-8.5, Hawai'i Revised Statutes, are made.

**The Works of Art Special Fund** Shall be used solely for the following purposes: (1) Costs related to the acquisition of works of art, including any consultant or staff services required to carry out the art in public places and relocatable works of art programs; (2) Site modifications, display, and interpretive work necessary for the exhibition of works of art; (3) Upkeep services, including maintenance, repair, and restoration of works of art; (4) Storing and transporting works of art.

FY2021 ART IN PUBLIC PLACES COLLECTION PURCHASES & GIFTS

The APP Program acquires works of art, and commissions artists to create works of art for specific locations. These works of art are displayed in over 500 sites statewide including schools, libraries, hospitals, airports, state office buildings, the State Capitol and at the State Art Museum.

Acquisition Committees visited 14 exhibits and recommended 49 works of art for purchase in FY21. Committee visits by island: Hawai'i Island 3, Kaua'i 1, Maui 2, and O'ahu 8. 60 artworks by 40 artists were acquired for a total of \$229,670.08. (Note: acquisitions are tallied by payment processing date and include works nominated towards the end of FY20.) A full list of artworks acquired can be viewed on the SFCA website: [sfca.hawaii.gov/fy2021-art-in-public-places-collection-acquisitions](https://sfca.hawaii.gov/fy2021-art-in-public-places-collection-acquisitions).







## ARTISTS OF RELOCATABLE WORKS OF ART (purchased)

Neida Bangerter, Jisoo Boggs, Pratisha Budhiraja, Melissa Chimera, Ed Clapp, Sachelle Dae, Duncan Dempster, Scott Fitzel, Sally French, Ana Gaion, Christine Halton, Jada Harris, Lynda Hess, Joshua Holzmamm, Roen Hufford, Nick Hunsinger, Robb Jones, Linda Kane, Wendy Kawabata, Caroline Killhour, Kirk Kurokawa, Sheri Levin McNerthney, Ming Li Jiang, Kathleen Mishina, Bon Moore, Hiroki Morinoue, Margo Ray, Michelle Schwengel, Bruna Stude, Jonathan Swanz, Masami Teraoka, Gail Toma, Chloe Tomomi, Elizabeth Train, Lauren Trangmar, David Vitarelli, Tom Walker, Lawrence Yager, Scott Yoell, Mariana Zopel.

## GIFTS

Over 15% of the Art in Public Places Collection were gifted to the State of Hawai'i. In FY2021, one gift was received.

Gift of Mary Taehee Kim: "Yeon U (Mist)" acrylic on canvas painting, 2020. Artist: Mary Taehee Kim.

## DISPLAY

4,459 Relocatable Works of Art were on view in 555 display sites (including 195 at the State Art Museum) at the beginning of FY2021.

The APP Collection online catalog can be accessed via the SFCA website, searchable by artist, title, material, and more at [sfca.hawaii.gov/art-in-public-places-program](https://sfca.hawaii.gov/art-in-public-places-program).

## ART IN PUBLIC PLACES PROGRAM CONTRACTS

**Ai Media LLC**, Public program coordination for HiSAM, \$62,800.00

**Alii Security Systems Inc.**, Security services, \$210,496.80

**Artisan Restoration International**, Conservation and maintenance of works of art, \$46,000.00

**Axiell ALM Canada Inc.**, Database migration, testing and training for Art in Public Places Collection, \$33,804.00

**Blackhawk Security LLC**, Upgrade existing security system, \$4,243.93

**Sean Browne**, Creation/installation of an interior stone sculpture for the Honolulu International Airport, Inter Island Terminal, Mauka Extension, \$34,000.00

**Kim Duffet Sculptor LLC**, Conservation and maintenance of outdoor permanent works of art, \$12,400.00

**Donald Harvey**, Preventive maintenance, cleaning and repairs for permanent works of art, \$14,969.00

**Donald Harvey**, Maintenance of various works of art, \$17,277.37

**Hawai'i Alliance for Arts Education**, The Art Bento Program at HiSAM, \$287,935.44

**Honolulu Biennial Foundation**, Arts Summit, \$80,000.00

**Kelley Hestir Art Inc.**, Creation/installation of a site-specific work of art (Filipino Veterans of WWII Monument at Waipahu Public Library), \$83,270.00

**Makauila Inc.**, Interpretive work for Art in Public Places Collection, \$28,900.51

**Mira Image Construction LLC**, Conservation of works of art, \$45,690.00

**Orig Media LLC**, Documentation of works of art, \$21,934.55

**Orig Media LLC**, Video production services for interpretive work regarding Art in Public Places Collection, \$14,376.96

**Prysm Enterprises LLC**, Art at the Capitol site-specific multimedia art display, \$16,874.40

**Lisa Shiroma**, Service fee for written interpretations of Art in Public Places Collection, \$1,800.00

**Tree Concepts Hawaii**, Landscape maintenance of Sculpture Garden, \$37,420.00

**West Oahu Aggregate Co.**, Disposal Services, \$4,732.54

**Doug Young**, Creation/installation of interior works of art for the Daniel K. Inouye International Airport, \$115,000.00







## APPENDIX B: GRANTS AND COMMUNITY PROGRAM CONTRACTS

### Artists in the Schools Residencies

- Ellen V. Crocker, \$16,000.00
- Lisa Louise Adams, \$38,000.00
- Ashiya K. Carter, \$30,000.00
- Christine Anne Cook, \$14,000.00
- Maggie Costigan, \$4,950.00
- Michael R. Cowell, \$11,840.00
- Create With Clay Hawaii Inc., \$58,000.00
- Jeanne C. Endo, \$30,000.00
- Hawai'i Opera Theatre, \$6,280.00
- Marguerite A. Heart, \$6,000.00
- Honolulu Theatre for Youth, \$31,240.00
- Steven W. Kean, \$5,000.00
- Bonnie J. Kim, \$19,500.00
- Elizabeth Marcil, \$32,000.00
- Maui Arts & Cultural Center, \$30,000.00
- Maui Dance Council, \$51,170.00
- Laurel Salinas Nakanishi, \$40,000.00
- Leslie M. Osborne, \$18,603.00
- Prince Dance Company, \$12,240.00
- Hannah Shun, \$6,000.00
- Soulgood LLC, \$7,900.00
- Michael Wall, \$30,000.00
- Jill Weiner, \$11,475.00

### Arts Education Contracts

- Hawai'i Alliance for Arts Education, Professional Education for Teachers and Teaching Staff, \$14,000.00
- Honolulu Theatre for Youth, Professional Education for Teachers and Teaching Staff, \$20,000.00
- Honolulu Theatre for Youth, Poetry Out Loud Hawai'i, \$20,000.00
- JN Productions Inc., Arts Educational Videos, \$24,960.00

## Culture Contracts

### CULTURE PROJECTS

- Bishop Museum, Cultural Preservation Support, \$66,250.00
- Friends of Iolani Palace, Cultural Preservation Support, \$66,250.00
- Hawai'i Information Consortium, SFCA website redesign, \$22,994.76
- National Organization for Traditional Artists Exchange, Folk and Traditional Arts Program Support, \$59,000.00
- University of Hawai'i, Statewide Presenting and Touring, \$75,000.00

### FOLK AND TRADITIONAL ARTS

#### FILIPINO

“Philippine Dance Teaching Methodology” (O’ahu). Teacher: H. Wayne Mendoza (O’ahu), Apprentice: Gwendolyn Arbaugh (O’ahu). \$4,800.00

#### HAWAIIAN

“‘Ukūkē Ho’opili Hou (Indigenous Stringed Instrument)” (O’ahu). Teacher: Mahi La Pierre (O’ahu), Apprentices: ‘Iliahi Doo and Kunane Wooton (O’ahu). \$6,700.

“Ka Mahiole (Ulana ‘Ie)” (Maui). Teacher: Kumula’au Sing (O’ahu), Apprentice: Haunani Balino-Sing (O’ahu). \$10,800.

“Hula Ki’i: A Tradition of Hawaiian Puppetry” (O’ahu). Teacher: Auli’i Mitchell (O’ahu), Apprentice: Meleanna Aluli Meyer (O’ahu). \$4,000.00

“Exploring the Art & Craft of Hawaiian Hat Weaving (Lauhala)” (O’ahu). Teacher: Marcia Omura (O’ahu). Apprentice: Makanani Lopes (O’ahu). \$4,800.00

#### OKINAWAN

“Ryukuan Dance Apprenticeship (Okinawan Dance)” (O’ahu). Teacher: Frances Nakachi Kuba (O’ahu), Apprentices: Eric Kobayashi, Anna Tsuchiko Lewis, Megan Martin (O’ahu). \$4,000.00

“Shuri Style Kumiwudui (Okinawan Dance/Drama)” (Maui). Teacher: Cheryl Nakasone (O’ahu), Apprentice: Wendy Tamashiro (Maui). \$6,900.00

“Okinawan Kucho Performance: Classical and Folk Music (Okinawan Kucho)” (O’ahu). Teacher: Allison Yanagi (O’ahu), Apprentice: Kathleen Oshiro (O’ahu). \$4,000.00

### BIENNIUM GRANTS

#### HAWAII ISLAND

Aloha Performing Arts Company, “Aloha Teen Theatre Production 2021,” \$12,000.00







**Friends of the Palace Theatre**, “Celebration of Hawaiian Music Series 2021,” \$15,000.00

**Hawai’i Concert Society**, “Hawai’i Concert Society Season 2020–2021,” \$6,600.00

**Kamuela Philharmonic Orchestra**, “Master Works Concerts,” \$15,000.00

**Na’alehu Theatre**, “Hawaiian Music Masters Youth Outreach and Community Reinvestment,” \$10,000.00

**Society for Kona’s Education & Art**, “The Basic Art of Community Learning,” \$15,000.00

**West Hawaii Dance Theatre**, “West Hawaii Dance Theatre Expanded Basic Program Year 2,” \$8,000.00

**KAUA’I**

**Garden Island Arts Council**, “Kaua’i Community Arts Basic Development,” \$15,000.00

**Kauai Chorale**, “The Kauai Chorale,” \$7,000

**LĀNA’I**

**Lāna’i Arts and Culture Center**, “LAC Community Art Outreach,” \$10,000

**MAUI**

**Hui No’eau**, “Provide, Promote, Perpetuate Local Visual Arts through Education,” \$15,000

**Maui Academy of Performing Arts**, “School Partnership Programs,” \$15,000

**Maui Arts & Cultural Center**, “MACC Presents 2020–2021: Selected Works,” \$15,000

**Maui Dance Council**, “Chance to Dance,” \$15,000

**Maui Pops Orchestra Inc.**, “Maui Pops Orchestra 2020–2021 Concert Season,” \$15,000

**Portuguese Association of Maui**, “Basic Portuguese Culture,” \$6,000

**O’AHU**

**Ballet Hawaii**, “Ballet Hawaii Presents 2020–2021,” \$15,000

**Bamboo Ridge Press**, “Bamboo Ridge Basic 2021,” \$15,000

**Chamber Music Hawaii**, “Basic Statewide Chamber Music,” \$15,000

**Diamond Head Theatre**, “Groundhog Day,” \$12,000

**Hawai’i Council for the Humanities**, “Hawai’i History Day 2020–2021,” \$14,000

**Hawaii Craftsmen**, “Workshops and Exhibitions of Hawai’i Artists Craftsmen,” \$10,000

**Hawaii Institute for Music Enrichment**, “Hawaii Steel Guitar Festival,” \$15,000

**Hawai’i Symphony Orchestra**, “Hawai’i Symphony Orchestra 2020–2021 Concert Season,” \$15,000

**Hawaii United Okinawa Association**, “Warabi-Ashibi Okinawan Cultural Day Camp for Children,” \$12,000

**Hawaii Youth Opera Chorus**, “Music Education for Grades K–12,” \$15,000

**Hawaii Youth Symphony Association**, “Music Education for Hawaii’s Youth”, \$15,000

**Honolulu Museum of Art**, “Art and Cultural Object Kits,” \$15,000

**Honolulu Printmakers**, “Annual Juried Print Exhibition,” \$7,500

**Honolulu Theatre for Youth**, “HTY’s Statewide Tour,” \$15,000

**Hula Preservation Society**, “Living History Through the Voices of Our Elders,” \$10,000

**Kalihi-Palama Culture and Arts**, “Kalihi-Palama Community Arts Project,” \$15,000

**Kumu Kahua Theatre**, “Kumu Kahua Theatre 50th Season,” \$15,000

**Le Fetuao Samoan Language**, “Technology Boost Camp,” \$13,000

**Mana Maoli**, “The Mana Mele Project,” \$13,000

**Moanalua Gardens Foundation**, “44th Annual Prince Lot Hula Festival,” \$15,000

**Monkey Waterfall**, “Imaginary Homelands,” \$7,000

**Nova Arts Foundation**, “IONA’s Annual Season,” \$15,000

**Ohana Arts Inc.**, “2021 Ohana Arts Pre-College Academy Musical Theatre Techniques Workshop,” \$12,000

**PA’I Foundation**, “Mo’olelo Storytelling Festival,” \$15,000

**University of Hawai’i (Outreach College)**, “University of Hawai’i Presents,” \$7,500

**University of Hawai’i (Music Department)**, “Symphony of the Hawaiian Birds: UH Wind Ensemble to Maui,” \$15,000

**AMERICAN RESCUE PLAN**

American Rescue Plan (ARP) funds distributed in fiscal year 2022. For additional information and a full list of grantees, please visit the SFCA website: [sfca.hawaii.gov/sfca-american-rescue-plan-grants-2/](https://sfca.hawaii.gov/sfca-american-rescue-plan-grants-2/).







# SCHOOLS SERVED

This list includes schools served by SFCA arts education programs (Artists in the Schools, Artists in Residence, Poetry Out Loud and Art Bento), as well as community programs supported by SFCA funding and schools that participated in student art exhibits at HiSAM.

## HAWAI'I ISLAND

### School District: Hawai'i

Connections PCS  
Ernest Bowen DeSilva Elementary  
Ha'aheo Elementary  
Hawai'i Academy of Arts & Sciences PCS  
Hawai'i Preparatory Academy\*  
Hawaii Technology Academy, Kona PCS  
Heartlight Montessori Homeschool\*  
Hilo High  
Hilo Intermediate  
Hilo Union Elementary  
Holualoa Elementary School  
Hōnaunau Elementary  
Honoka'a Elementary  
Innovations PCS  
Kahakai Elementary  
Kamehameha Schools – Hawai'i Island\*  
Kanu o ka 'Āina PCS  
Ka'u High and Pāhala Elementary  
Ke Kula 'O 'Ehunuikaimalino School  
Kea'au Elementary  
Kea'au High  
Kealakehe Elementary School  
Kealakehe Intermediate School  
Keonepoko Elementary  
Kohala Elementary  
Kona Pacific PCS  
Konawaena Elementary  
Konawaena High School  
Kua O Ka La New Century PCS  
Makua Lani Christian Academy\*  
Mountain View Elementary

Pāhoa Elementary  
Parker School\*  
Volcano School of Arts and Sciences PCS  
Waiākea Elementary  
Waiākea High  
Waiākeawaena Elementary  
Waikoloa Elementary and Middle  
Waimea Elementary

## KAUA'I

### School District: Kaua'i

Chiefess Kamakahalei Middle  
'Ele'ele Elementary  
Elsie H. Wilcox Elementary  
Hanalei Elementary School  
Hawaii Technology Academy,  
Kaua'i PCS Island School\*  
Kahili Adventist School\*  
Kalaheo Elementary  
Kanuikapono PCS  
Kapa'a Elementary  
Kapa'a High  
Kauai Christian Academy\*  
Kaua'i High  
Kawaikini New Century PCS  
Ke Kula Ni'ihau O Kekaha PCS  
Kekaha Elementary  
Kilauea Elementary School  
Kula Aupuni Ni'ihau A Kahelelani Aloha PCS  
St. Catherine School\*  
St. Theresa Catholic School Kaua'i\*  
Waimea Country School\*

## LĀNA'I

### School District: Maui

Lāna'i High and Elementary

## MAUI

### School District: Maui

Carden Academy of Maui\*  
Children's Garden Preschool\*  
Christ the King Preschool\*  
Fun, 2, 3 Preschool\*  
Hā'iku Elementary  
Hāna High and Elementary  
Hawaii Technology Academy, Maui PCS  
Henry Perrine Baldwin High  
Iao Intermediate  
Iao Preschool\*  
Ka'ahumanu Hou Christian\*  
Kahului Elementary  
Kahului Hongwanji Preschool\*  
Kamali'i Elementary  
Kamehameha Preschool Hana\*  
Kamehameha Preschool Paukukalo\*  
Kamehameha Schools – Maui\*  
Keiki O Ka 'Aina Family Learning Centers  
Kihei Elementary  
King Kamehameha III Elementary  
King Kaumuali'i Elementary  
King Kekaulike High  
Kula Elementary  
Lihikai Elementary  
Lokelani Intermediate School  
Makawao Elementary  
Makawao Hongwanji Preschool\*  
Maui Preparatory Academy\*  
Maui Waena Intermediate  
Montessori School of Maui\*  
Pā'ia Elementary  
Pōmaika'i Elementary  
Princess Nahi'ena'ena Elementary

Pukalani Elementary  
Pūnana Leo o Hāna\*  
Pu'u Kukui Elementary  
Seabury Hall School\*  
Waihe'e Elementary  
Wailuku Elementary  
Wailuku Union Church Preschool\*

## MOLOKA'I

### School District: Maui

Kaunakakai Elementary  
Kilohana Elementary  
Kualapu'u Elementary PCS  
Maunaloa Elementary  
Molokai High School

## O'AHU

### School District: Central O'ahu

Admiral Chester W. Nimitz Elementary  
Aiea Intermediate  
Āliamanu Elementary  
Āliamanu Middle  
Alvah A. Scott Elementary  
Daniel K. Inouye Elementary  
Gustav H. Webling Elementary  
Hale'iwa Elementary  
Hanalani Schools\*  
Helemano Elementary  
Holy Family Catholic Academy\*  
'Iliahi Elementary  
Ka'ala Elementary  
Kamalani Academy PCS  
Kīpapa Elementary  
Leilehua High  
Lt. Col. Horace Meek Hickam Elementary  
Major General William R. Shafter Elementary  
Makalapa Elementary  
Mililani 'Ike Elementary  
Mililani High School







Mililani Mauka Elementary  
Mililani Uka Elementary  
Mililani Waena Elementary  
Moanalua Elementary  
Moanalua High  
Moanalua Middle  
Mokulele Elementary  
Navy Hale Keiki School\*  
Red Hill Elementary School  
Salt Lake Elementary  
Sergeant Samuel K. Solomon Elementary  
Sounds of Success Preschool\*  
The Children's House\*  
Trinity Lutheran School\*  
Wahiawā Elementary  
Wahiawa Intermediate School  
Wahiawa Middle School  
Wai'alae Elementary PCS  
Waialua Elementary  
Waimalu Elementary

**School District: Honolulu**

‘Āina Haina Elementary  
Ala Wai Elementary  
Ali‘iolani Elementary  
Assets School\*  
Governor Wallace Rider Farrington High School  
Haha‘ione Elementary  
Halau Ku Mana PCS  
Hanahau‘oli School\*  
Hawai‘i Baptist Academy\*  
Hawai‘i School for the Deaf and the Blind  
Hawaiian Mission Academy\*  
Henry J. Kaiser High  
Hōkūlani Elementary  
Holy Nativity School\*  
Hongwanji Mission School\*  
Honolulu Waldorf School\*  
‘Iolani School\*

Ka‘ewai Elementary  
Ka‘uluwela Elementary  
Ka‘ewai Elementary  
Kāhala Elementary  
Kaimukī Christian School\*  
Kaimukī High  
Kaimuki Middle  
Kalani High  
Kalihi Elementary  
Kalihi Kai Elementary School  
Kalihi Uka Elementary School  
Kalihi Waena Elementary  
Kamehameha Elementary School\*  
Kamehameha Schools – Kapalama\*  
Kamilo‘iki Elementary  
Kapālama Elementary  
Ke Kula Kaiapuni ‘O Anuenue PCS  
King Liholiho Elementary  
King William C. Lunalilo Elementary  
Koko Head Elementary  
La Pietra — Hawai‘i School For Girls\*  
Lanakila Elementary  
Likelike Elementary  
Linapuni Elementary  
Ma‘ema‘e Elementary  
Mānoa Elementary  
Maryknoll Grade School\*  
Maryknoll High School\*  
Mayor John H. Wilson Elementary  
Mayor Joseph J. Fern Elementary  
McKinley High  
Mid-Pacific Institute\*  
Montessori Community School\*  
Mo‘O School\*  
Myron B. Thompson Academy PCS  
Niu Valley Middle School  
Noelani Elementary  
Nu‘uanu Elementary

Pālolo Elementary  
Pauoa Elementary  
President Abraham Lincoln Elementary  
President Theodore Roosevelt High School  
President Thomas Jefferson Elementary  
President William McKinley High School  
Prince David Kawanānakoā Middle School  
Prince Jonah Kūhiō Elementary  
Princess Kaiulani Elementary School  
Princess Likelike Elementary School  
Pu‘uhale Elementary  
Punahou Schools\*  
Queen Ka‘ahumanu Elementary  
Robert Louis Stevenson Middle  
Royal School  
Sacred Hearts Academy\*  
Soto Academy\*  
St Andrew’s Schools\*  
St. Louis School\*  
St. Theresa Catholic School\*  
University Laboratory PCS  
University of Hawai‘i at Mānoa —  
Center for Pacific Island Studies  
University of Hawai‘i at Mānoa —  
College of Education  
Voyager PCS  
Wai'alae Elementary PCS  
Waikīki Elementary  
Waulani Judd Nazarene School\*  
William P. Jarrett Middle

**School District: Leeward O‘ahu**

August Ahrens Elementary  
Barbers Point Elementary  
Dreamhouse ‘Ewa Beach PCS  
‘Ewa Beach Elementary  
‘Ewa Elementary  
Friendship Christian Schools\*  
Hawai‘I Technology Academy, Waipahu PCS

Highlands Intermediate  
Ho‘okele Elementary  
Holomua Elementary  
Honowai Elementary  
Ilima Intermediate School  
Iroquois Point Elementary  
Island Pacific Academy\*  
Ka Waihona o ka Na‘auao PCS  
Ka‘imiloa Elementary  
Kalei‘opu‘u Elementary  
Kamaile Academy PCS  
Kanoelani Elementary  
Kapolei Elementary  
Kapolei High School  
Keone‘ula Elementary  
Leihōkū Elementary  
Mā‘ili Elementary  
Mākaha Elementary  
Makakilo Elementary  
Mānana Elementary  
Mauka Lani Elementary  
Momilani Elementary  
Nānāikapono Elementary  
Nānākuli Elementary  
New Hope Christian School\*  
Palisades Elementary  
Pearl City Elementary  
Pearl City High School  
Pearl City Highlands Elementary  
Pearl Harbor Elementary  
Pearl Harbor Kai Elementary  
Pearl Ridge Elementary  
Pohakea Elementary School  
St. Joseph Parish School\*  
University of Hawai‘i – West O‘ahu  
Wai‘anae Elementary  
Wai‘anae High School  
Waiau Elementary







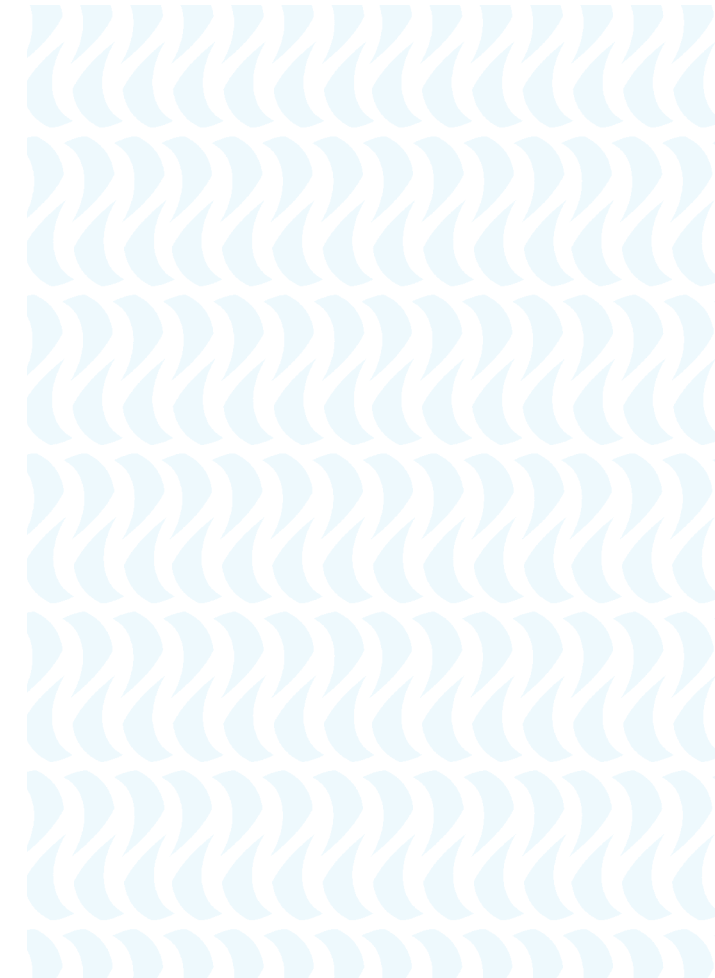
Waikele Elementary  
Waipahu Elementary

**School District: Windward O’ahu**

August Ahrens Elementary  
Barbers Point Elementary  
Dreamhouse ‘Ewa Beach PCS  
‘Ewa Beach Elementary  
‘Ewa Elementary  
Friendship Christian Schools\*  
Hawai’i Technology Academy, Waipahu PCS  
Highlands Intermediate  
Ho’okele Elementary  
Holomua Elementary  
Honowai Elementary  
Ilima Intermediate School  
Iroquois Point Elementary  
Island Pacific Academy\*  
Ka Waihona o ka Na’auao PCS  
Ka’imiloa Elementary  
Kalei’opu’u Elementary  
Kamaile Academy PCS  
Kanoelani Elementary  
Kapolei Elementary  
Kapolei High School  
Keone’ula Elementary  
Leihōkū Elementary  
Mā’ili Elementary  
Mākaha Elementary  
Makakilo Elementary  
Mānana Elementary  
Mauka Lani Elementary  
Momilani Elementary  
Nānāikapono Elementary  
Nānākuli Elementary  
New Hope Christian School\*  
Palisades Elementary  
Pearl City Elementary  
Pearl City High School

Pearl City Highlands Elementary  
Pearl Harbor Elementary  
Pearl Harbor Kai Elementary  
Pearl Ridge Elementary  
Pohakea Elementary School  
St. Joseph Parish School\*  
University of Hawai’i — West O’ahu  
Wai’anae Elementary  
Wai’anae High School  
Waiau Elementary  
Waikele Elementary  
Waipahu Elementary

PCS = Public Charter School  
\*Non-Department of Education Schools



# SFCA STAFF

*July 1, 2020–June 30, 2021*

## Department of Accounting & General Services

**Curt T. Otaguro**, Comptroller  
**Audrey Hidano**, Deputy Comptroller

## SFCA

### ADMINISTRATION

**Jonathan Johnson**, Executive Director  
**Rhiannon Keene**, Secretary

### SUPPORT SERVICES

**Mamiko K. Carroll**, Information Specialist  
**Sara Beth Newell**,  
Administrative Services Assistant  
**Susan Naanos**, Accountant  
**Lorelin Bartolome-Castillo**, Account Clerk

### DESIGNATED PROGRAMS

**Denise Miyahana**, Arts Program Specialist  
**Brittany Rakowitz**, Arts Program Specialist  
**Danica “Nikki” Rosengren**,  
Arts Program Specialist

### ART IN PUBLIC PLACES

**Karen Ewald**, Director, HiSAM and APP Program  
**Susan M. Hogan**, Museum Educator  
**Scott M. Young**, Visitor Services Manager  
**Elizabeth Baxter**, Curator  
**K. Teig Grennan**, Senior Exhibit Specialist  
**Nathan Balcombe**, Exhibit Specialist  
**Katharena Rentumis**, Exhibit Specialist  
**Zhi Situ**, Exhibit Specialist  
**Ozzie Kotani**, Registrar  
**Derek Erwin**, Conservation Coordinator  
**Kamakani Konia**, Project Manager  
**Alexandra Skees**, Project Manager  
**Vacant**: Collections Manager  
**Vacant**: Office Assistant III

## FY2020–2021 Annual Report

**Mamiko K. Carroll**, Editor  
**Design Asylum Inc.**, Design Firm  
**HonBlue**, Printer

### PHOTO CREDITS

**Bernice Pauahi Bishop Museum**: page 12  
**Brandyn Liu**: pages 08, 11  
**Convergence Dance Theatre**: pages 00–01, 21  
**Friends of Iolani Palace**: page 13  
**Honolulu Theatre for Youth**: page 10  
**Mana Maoli**: cover  
**National Park Service**: page 14  
**Palace Theater**: page 15  
**SFCA**: all other photos

