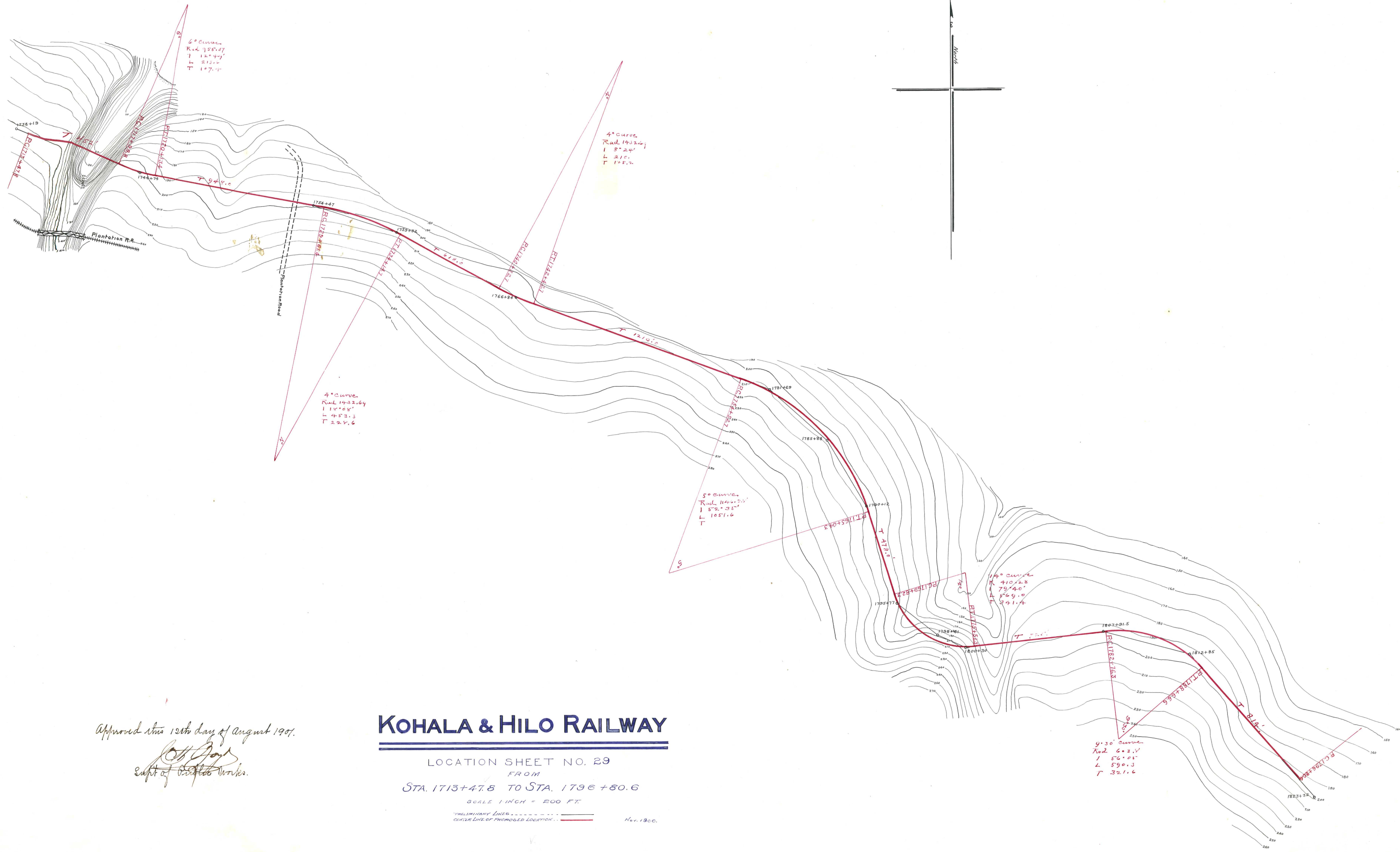


2100  
2100



Approved this 12th day of August 1907.  
*[Signature]*  
 Supt. of Public Works.

# KOHALA & HILO RAILWAY

LOCATION SHEET NO. 29  
 FROM  
 STA. 1713+47.8 TO STA. 1796+60.6  
 SCALE 1 INCH = 200 FT.  
 PROPOSED LINE - - - - -  
 CERTAIN LINE OF PROPOSED LOCATION - - - - -  
 Nov. 1900.

es to R  
 12-17  
 01-2-0  
 3/9