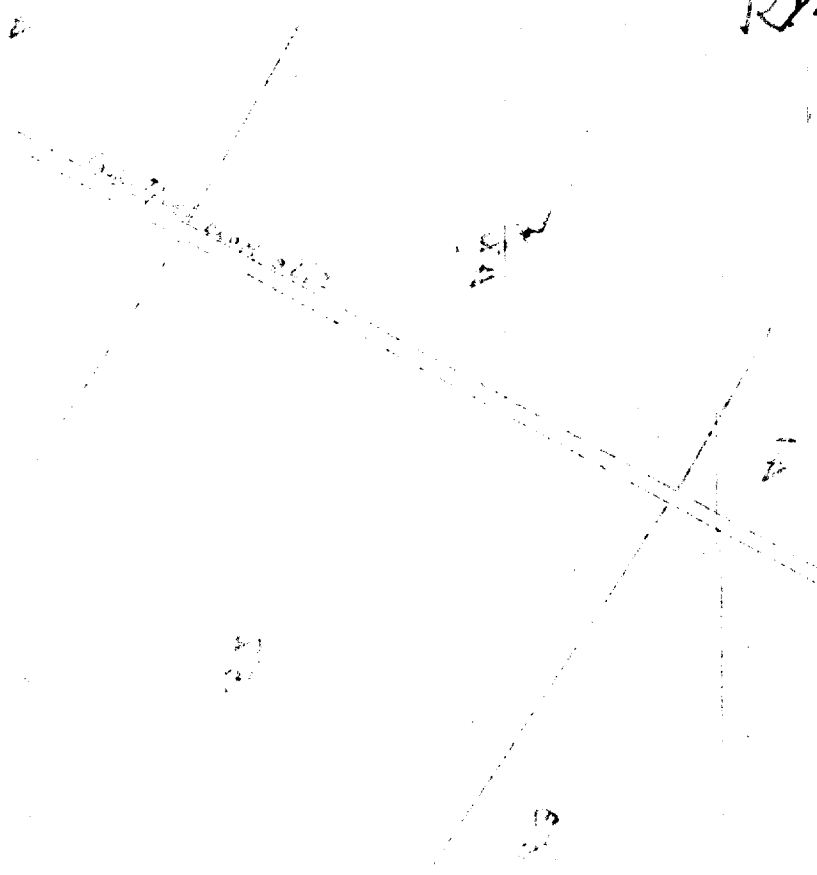


Part of Lots 51 & 52

Olaa Reservation Lots

Gr. 4172

Kyasuda & Fujiyama



Grant No. 4172

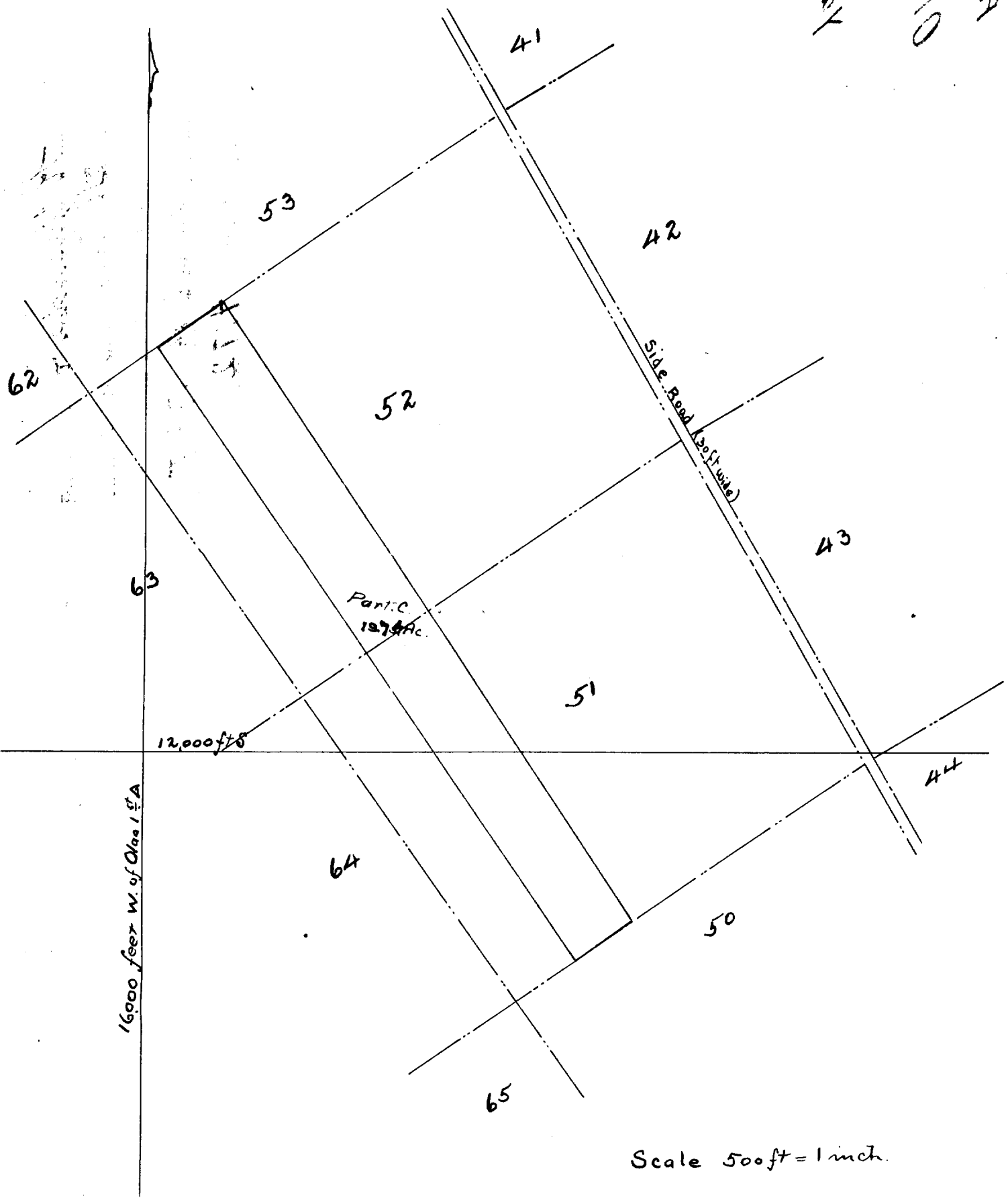
April 17, 1898

Copy furnished for Grant

H. Yasuda
Fujiyama

File in Carton 185

Section 12, 13, 14, 15
T11N R12E
S20 1/2 N 101 1/2 W 115
Older Section 12, 13, 14, 15
S20 1/2 N 101 1/2 W 115



For Grant to *K. Yasuda and J. Fujiyama.*
Purchase Price \$ 68.72.

Notes of Survey and Plan of
Part of Class Lots Nos. 51 & 52.

Assigned by S. Shimamoto to

K. Yasuda and I. Fujiyama.

Beginning at the east corner of this piece 1095
feet from the east corner of Lot No. 51; and running:-

- S. 55° 30' W. (true) 275.6 feet along Lot No. 50;
N. 34° 45' W. " 2895 feet across Lots Nos. 51 & 52;
N. 55° 20' E. " 320.5 feet along Lot No. 53;
S. 33° 40' E. " 2895 feet across Lots Nos. 52 & 51, to the

Point of Beginning.

Containing 19.74 Acres.

Hilo, Hawaii.

E. D. Baldwin,

Oct. 30th, 1897.

Surveyor.