

Lots 291
282
283
Part 296-A

Olaa Reservation Lots
Gr 432 ^{to}₂
F. Brughelli

Part B

see

see

see

2196 6009 602515 201196
601106 515228 6009 6012

see

see

see

file in Carton ¹⁵₄₈₆

Notes of Survey and Plan of
Alaa Reservation Lots Nos 246 Part A. Lots 241-283- and 282.

Leases Nos 114 and 126 to

Felix Bonghelli

Beginning on the Volcano Road at the North East corner of House Lot, which point is N 34° 12' E (True) 1441. feet from the South corner of Lot No 246. The coordinates of said South corner of Lot No. 246. being 39, 100. 92 feet South and 32, 107. 98 feet West of Alaa Trig Station and running:—

N 55° 48' N True	150.	feet along Forest Reservation;
N 34° 12' E	153.	" " " " "
N 63° 40' E	1728.	" " Lot No 240;
N 32° 18' E	1328.	" " " " 240; to Side Road;
N 18° 00' E	1230.	" Crossing Road and along Lot No 284;
N 72° 28' W	3630.	" along Lots Nos 274 and 275;
S 18° 00' N	1200.	" " Lot No 281;
S 72° 28' E	1815.	" " Side Road;
S 18° 00' N	30.	" across Side Road;
S 38° 52' W	1046.	" along Lot 242;
S 63° 40' E	1793.	" " " 245;
S 32° 18' W	731.	" " " 245;
S 63° 40' E	1699.	" " Part B. Lot 246;
N 34° 12' E	184.	" " Forest Reservation;
S 55° 48' E	150.	" " " " "
N 34° 12' E	400.	" " Volcano Road to the point of beginning

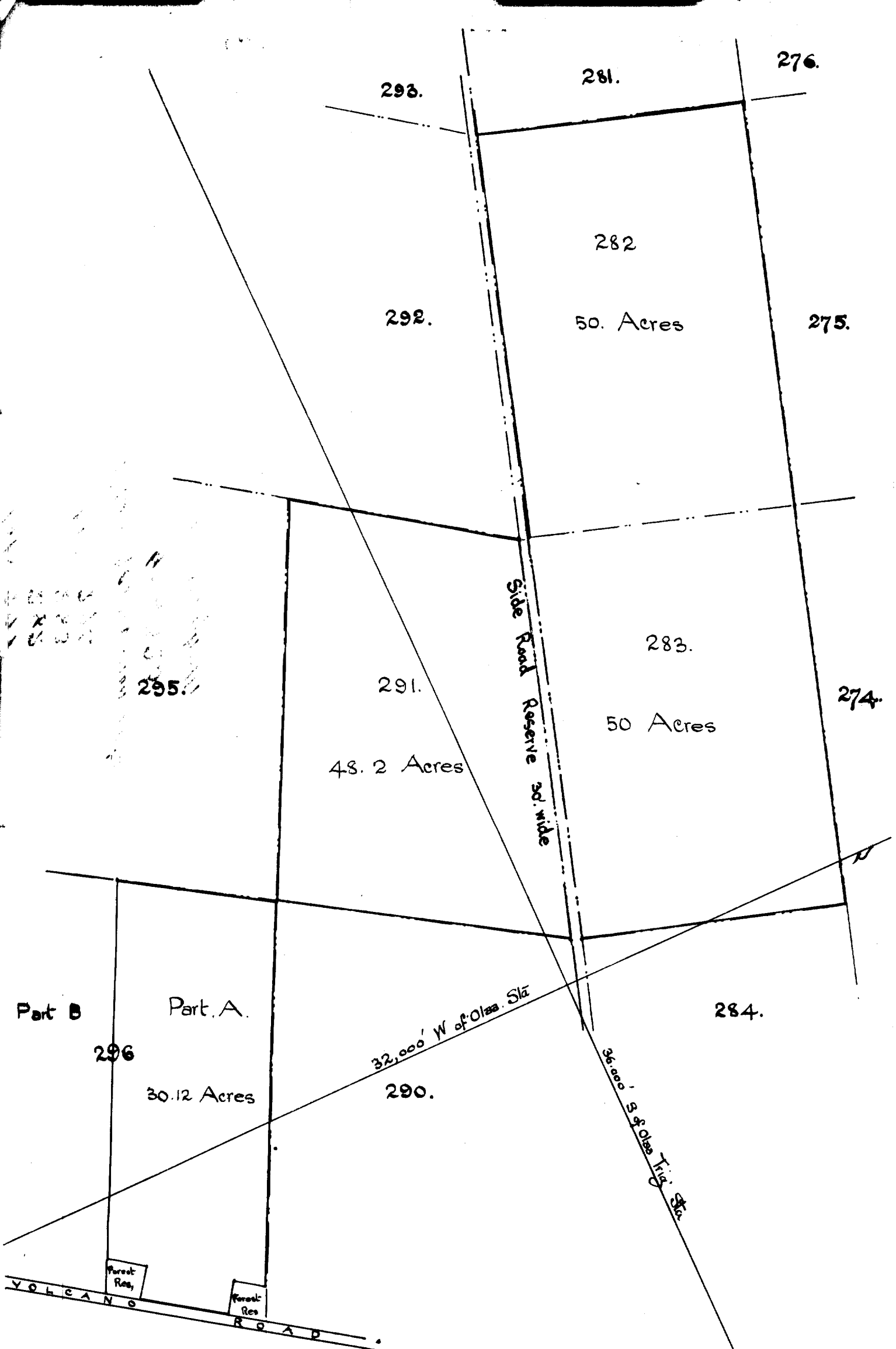
Containing 178.32 Acres exclusive of Side Roads which is reserved.—

Hilo Hawaii

April 24th 1899.

E. W. Baldwin
Surveyor

For Grant to Felix Bonghelli
Purchase Price \$ 788 52¹/₂



Scale
500. feet = 1. inch