

Lots 273-274

Old Reservation Lots

Gr. 4296

R. Zink

Section 12, Township 14N, Range 10E

20 Acres

less 5.12 for fees

Notarized Land

ASSAY

100

500

500

500

File in Carton 186

For Grant to Robert Zink
Purchase Price \$789⁵⁰

Notes of Survey and Plan of
Alaa Reservation Lots Nos 273, and 274.

Part of Lease No 24² and Lease No 73³ Series B 6

R. Zink

Beginning at the East corner of this piece, at ohia post
at junction of side road with the Volcano Road, the coor-
dinates of which point are 34,133.42 feet South and 29,689.83
feet West of Alaa Trig Station; and running:

S 18° 00' W True	145.	feet	along the Volcano Road;
N 72° 28' W	150.	Forest Reservation;
S 18° 00' N	650.
S 72° 28' E	150.
S 18° 00' W	255.	Volcano Road;
N 72° 28' W	150.	Forest Reservation;
S 18° 00' W	150.
N 72° 28' W	3440.	Lots Nos 284, and 283;
N 18° 00' E	1200. 275;
S 72° 28' E	3630.	the side Road to the

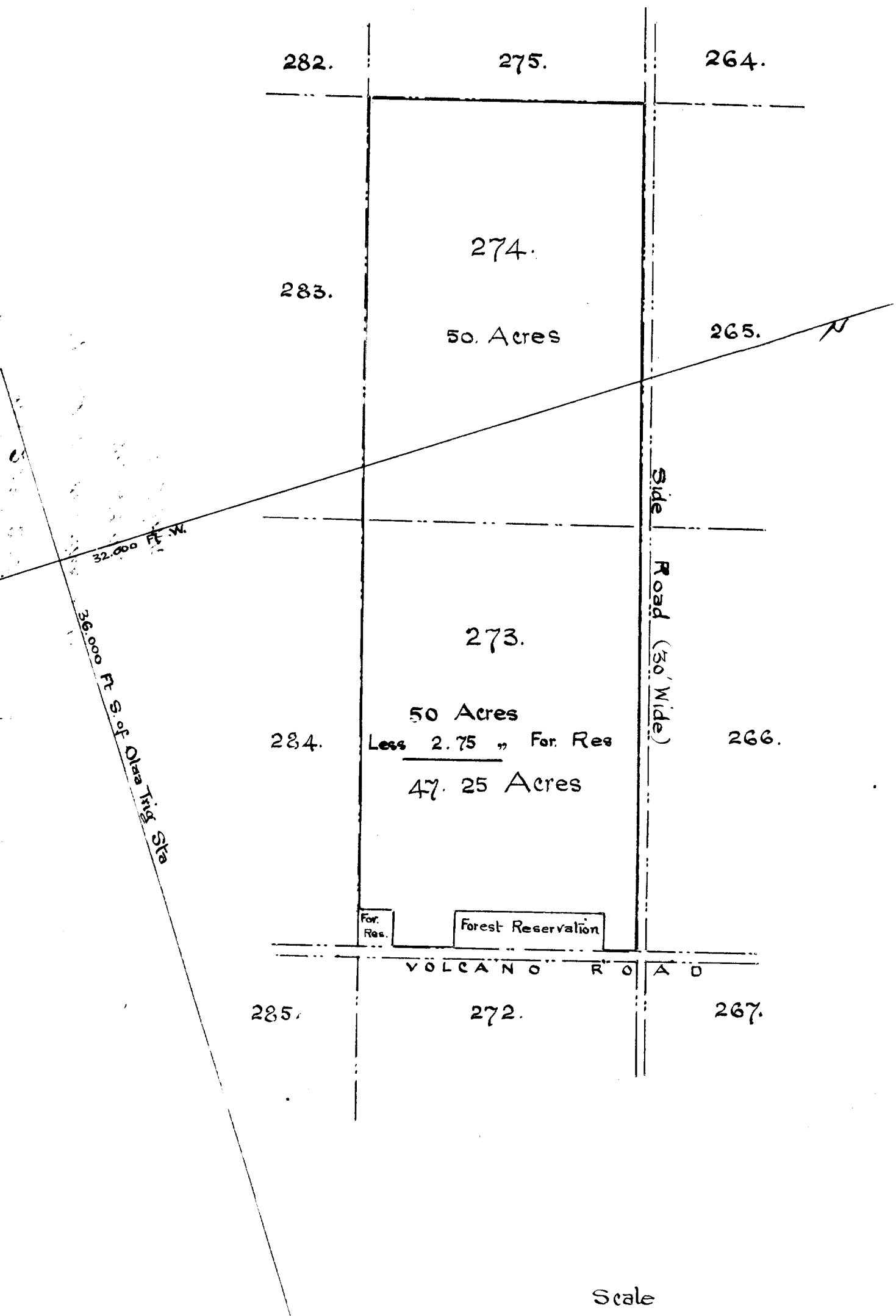
points of beginning

Containing 97.25 Acres

Hilo Hawaii

Nov. 1st 1897

E. W. Baldwin
Surveyor.



Scale
500. ft = .1. Inch.