

Description of Lot 24
Homesstead Map 16
Waipunauei Lots, Hilo

Copy furnished Land Office
Jan 23-1902

Grant No 4596

TO Joao Freitas
Date.

File in Carton 132.

Description of Lot 24,
Homestead Map 16,
Waipunaui Lots, Kilo, Hawaii

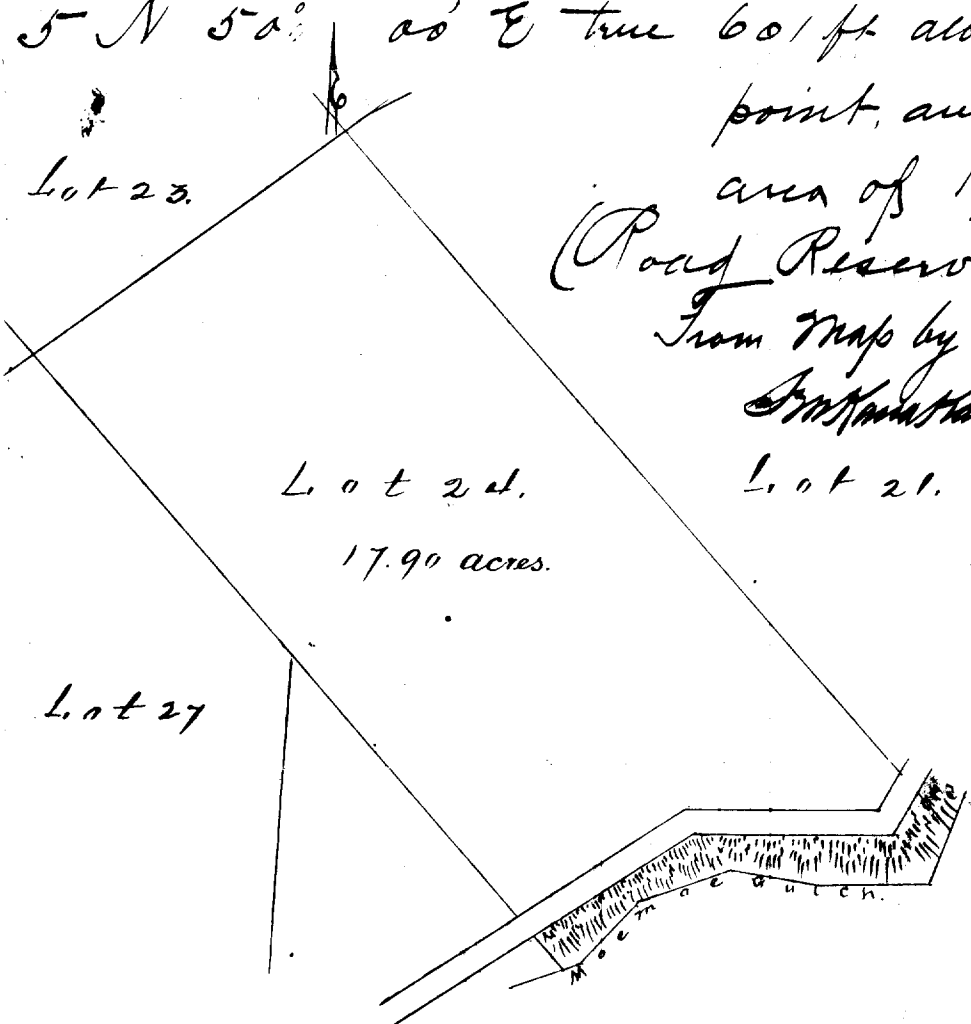
Beginning at N L of this Lot, being S. E. & NW of Lot 20, 23, & 21 respectively 1534 ft. S. 1888 ft. N of reference concrete block, at S L of lot 4, and running as follows:

- 1 S 45° 30' W, 1455 ft. along Lot 21, to middle of Moemoe gulch.
- 2 S 76° 20' W true 353 ft. the middle of Moemoe gulch being the boundary.
- 3 S 54° 15' W true 304 ft. the middle of Moemoe gulch being the boundary;
- 4 N 45° 30' W true 1275, along Lot 27.
- 5 N 50° 00' E true 601 ft. along Lot 23, to initial point, and containing an area of 17.90 acres.

(Road Reservation)

From Map by M. Schuchman.

S. M. Harris, June 15 1891



S 0.9
W 1.0

Scale 300ft = 1 in.