

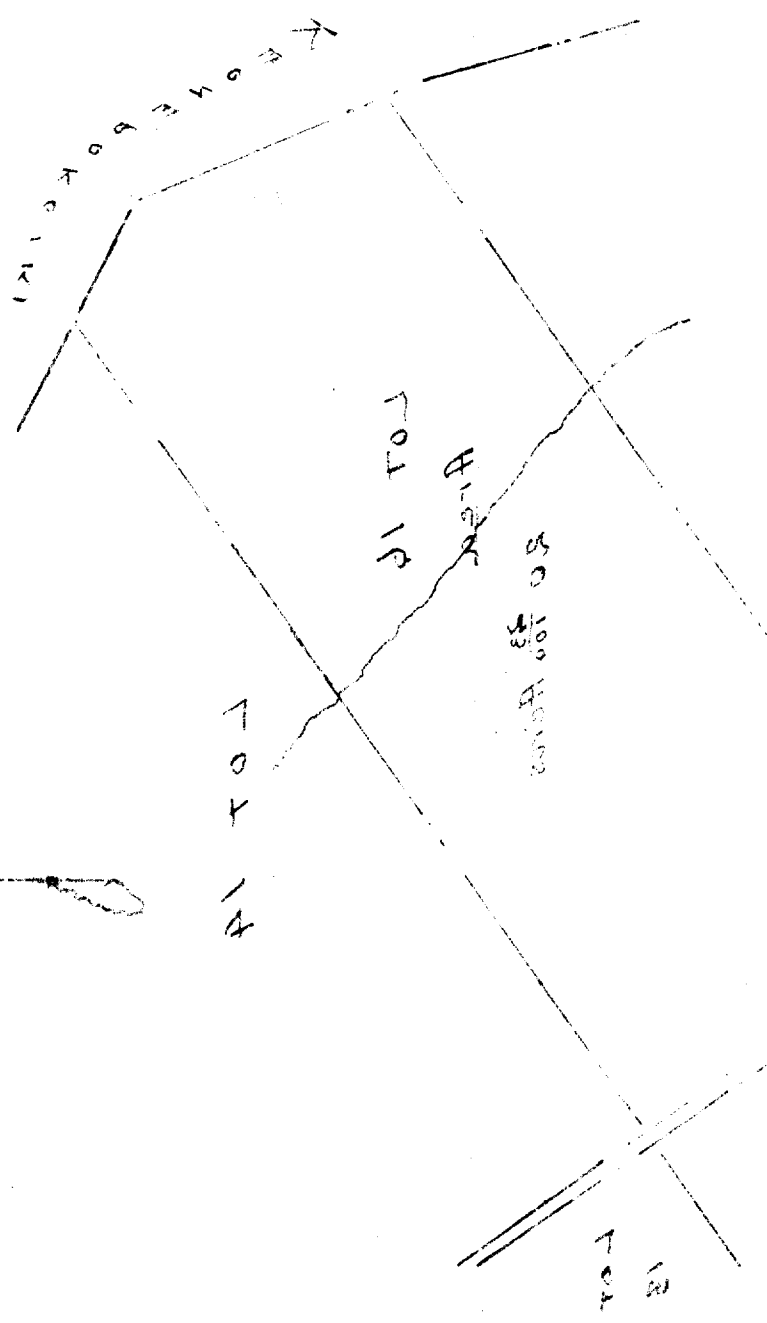
Let. 16. Homestead Map 22
Hanawale Land
Andrew Neilson

Copy furnished for Grant

Aug 17. 1899.

Grant No. 4381.

Andrew Neilson



File in Carton 200

For Grant to *Andrew Neilson*
Purchase Price \$ *60.69*

Homestead Map 22 Lot 16 Nanawale, Puna, Hawaii.

Beginning at the west angle of Lot No. 14, the boundary runs.

1. S. 53 30' E. True 1560 feet to the east angle at upper road.
2. S. 36 30' W. True 600 ft, along the upper road to the South angle.
3. N. 53 30' W. True 1565 ft, along Lot No 18 to the west angle, at old foot path, on the boundary of Keonepokoiki.
4. N. 24 00' E. True 427 ft, along old footpath on the boundary of Keonepokoiki.
5. N. 63 56' E. True 207 ft, along old footpath, on the boundary of Keonepokoiki, to the initial point, an containing an area of 20 23/100 Acres.

~~From A. B. Leobenstein's notes on file at Survey Office.~~

S. M. Kanakanui.

Asst Govt Surveyor

August 14.1899.

John W. Young
Wm. W. Young
John W. Young
Wm. W. Young
John W. Young
Wm. W. Young

1881

002 mks 200

