

Description of Lot 15

Homesstead Map 16.

Waipumali Lots. Hilo, Hawaii

Copy furnished Public Lands Office
aug. 9 -
~~July 24th~~ - 1901.

Grant No. 4493

TO Manuel Freitas Adrian

Date.

File in Carton 132.

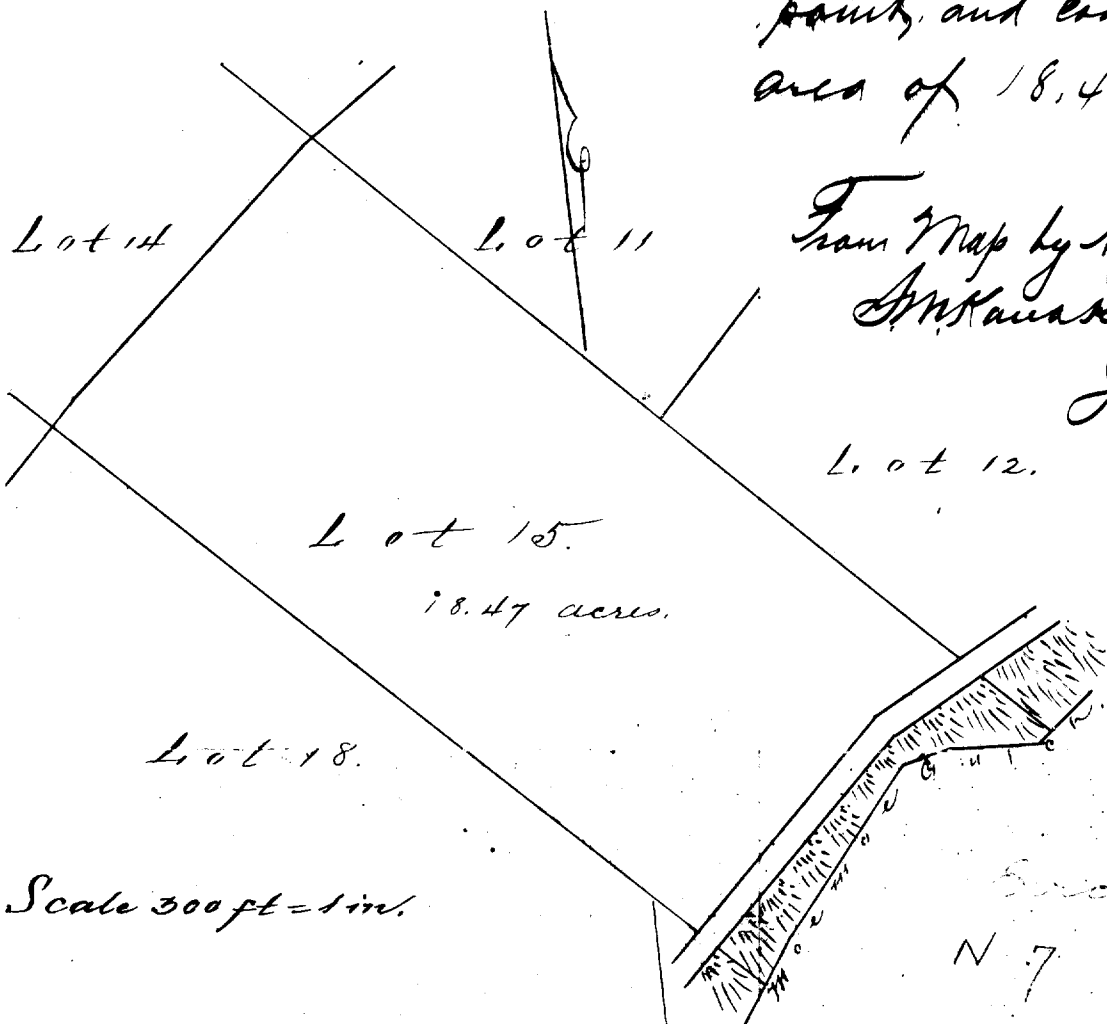
Description of Lot 15.

Homestead Map 16.

Maipumalei Lots, Kilo, Hawaii

Beginning at West corner of this lot, being S. E. & N. L. of lots 14, 17, 18, respectively 796 ft S. 942 ft N of reference ~~concrete block~~ at South corner of Lot 4, and running as follows.

- 1 S 45° 30' E true, 1420 ft. along Lot 18, to middle of Maemae gulch.
- 2 N 38° 35' E true 405 ft. the middle of Maemae gulch being the boundary.
- 3 N 82° 55' E true, 278 ft. (as above)
- 4 N 45° 30' W true 1492 ft along Lot 17 & 11,
- 5 S 48° 25' W true 600 ft along Lot 14, to initial point, and containing an area of 18.47 acres.



From Map by A. S. Lockington
A. N. Kauakauani
June 15 1891
Lot 12.

Scale 300 ft = 1 in.

N 7 E 1.5