

Description of Lot 12  
Homestead map 16  
Naipunalei Lots. Hills  
Hawaii

Grant No. 4468

TO *Juan per da Silva*  
Date.

File in Carton 132.

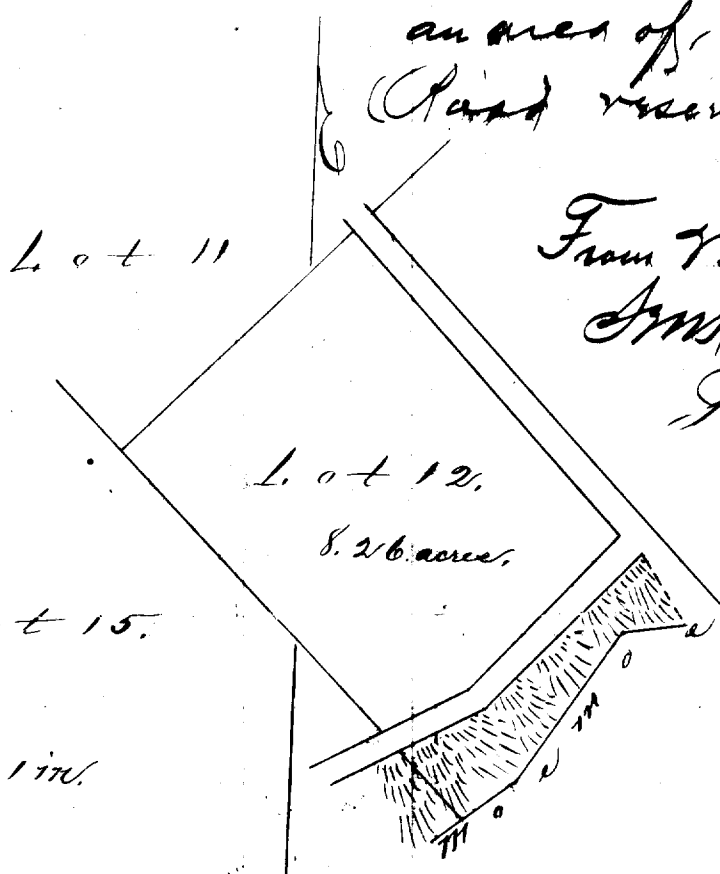
Description of Lot 12.

Homestead Map 16.

Waipunali Lots, Nils Hawaii

Beginning at N<sup>o</sup> 1 corner of this lot, at a point on road, being E corner of Lot 11, ~~598 ft~~ <sup>363 ft</sup> west of reference concrete block at South corner of Lot 4, and running as follows:

- 1 S 44° 30' ~~ft.~~ true, <sup>495</sup> ~~500~~ ft. along Lot 11,
- 2 S 45° 30' E true 787 ft along Lot 15, to middle of Maunoe gulch,
- 3 N 37° 55' E true 378 ft. the middle of Maunoe gulch being the boundary,
- 4 N 82° 45' E true 100 ft along Middle Maunoe gulch,
- 5 N 32° 34' W true 131 ft to point on road,
- 6 N 44° 00' W true 673 ft. along road to initial point, and containing an area of 8.26 acres.  
(Land reserved)



From Map by A. S. L.  
J. W. Kana Kana  
June 15 1891

Scale 300 ft = 1 in.