

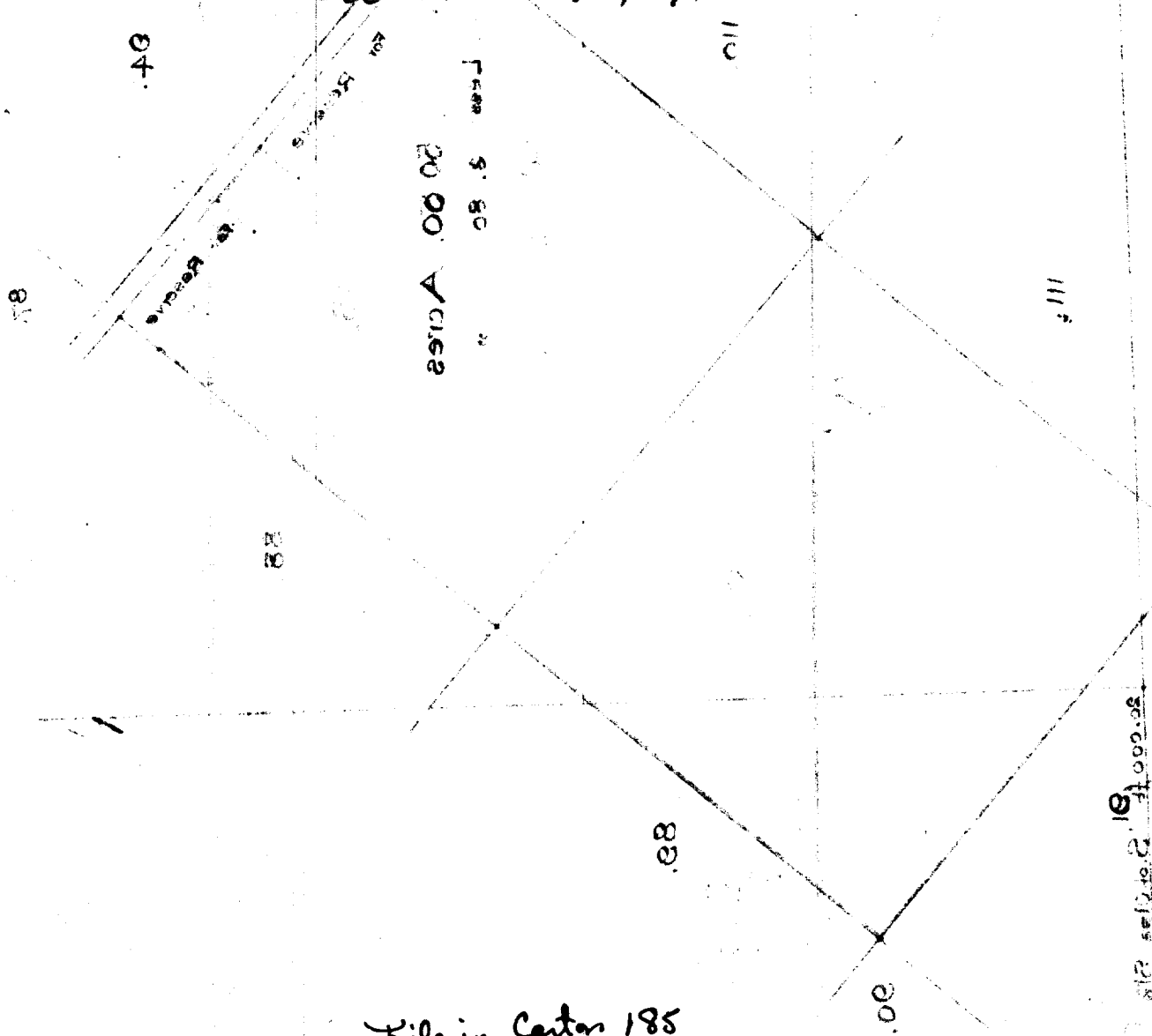
Lots 92-93

Olaa Reservation Lots

Gr 4220

R. Mason

see L.O. Deed 9291



File in Carter 185

Grant to R. Mason  
 Purchase Price \$ 477 <sup>20</sup>/<sub>100</sub>

Notes of Survey and Plan of  
Alaa Reservation Lots No 92 and 93

Lease No 95 Series B 5

R. Mason

Beginning at the West corner of Lot No 93 on Volcano Road, the coordinates of which point are 18,002.65 feet South and 18,307.18 feet West of Alaa 1<sup>st</sup> Trig. Sta.; and running:

N 48° 40' E	True	200.	feet	along the Volcano Road;
S 41° 20' E	"	150.	"	Forest-Reservation;
N 48° 40' E	"	650.	"	"
N 41° 20' W	"	150.	"	"
N 48° 40' E	"	200.	"	Volcano Road;
S 41° 20' E	"	150	"	Forest-Reservation;
N 48° 40' E	"	450	"	"
S 41° 20' E	"	2754	"	Lots Nos 88 and 89;
S 48° 40' N	"	1500.	"	Lot No. 91;
N 41° 20' W	"	2904	"	Lot No 111. and 110.

to the point of beginning;

Containing 96.2 Acres

Hilo Hawaii

E. H. Baldwin  
 Surveyor

Grant No. 4220  
 To R. Mason, covering Oloo Lots Nos.  
 92 and 93, Crown Lease No. 95, Oloo,  
 Puna, Hawaii.

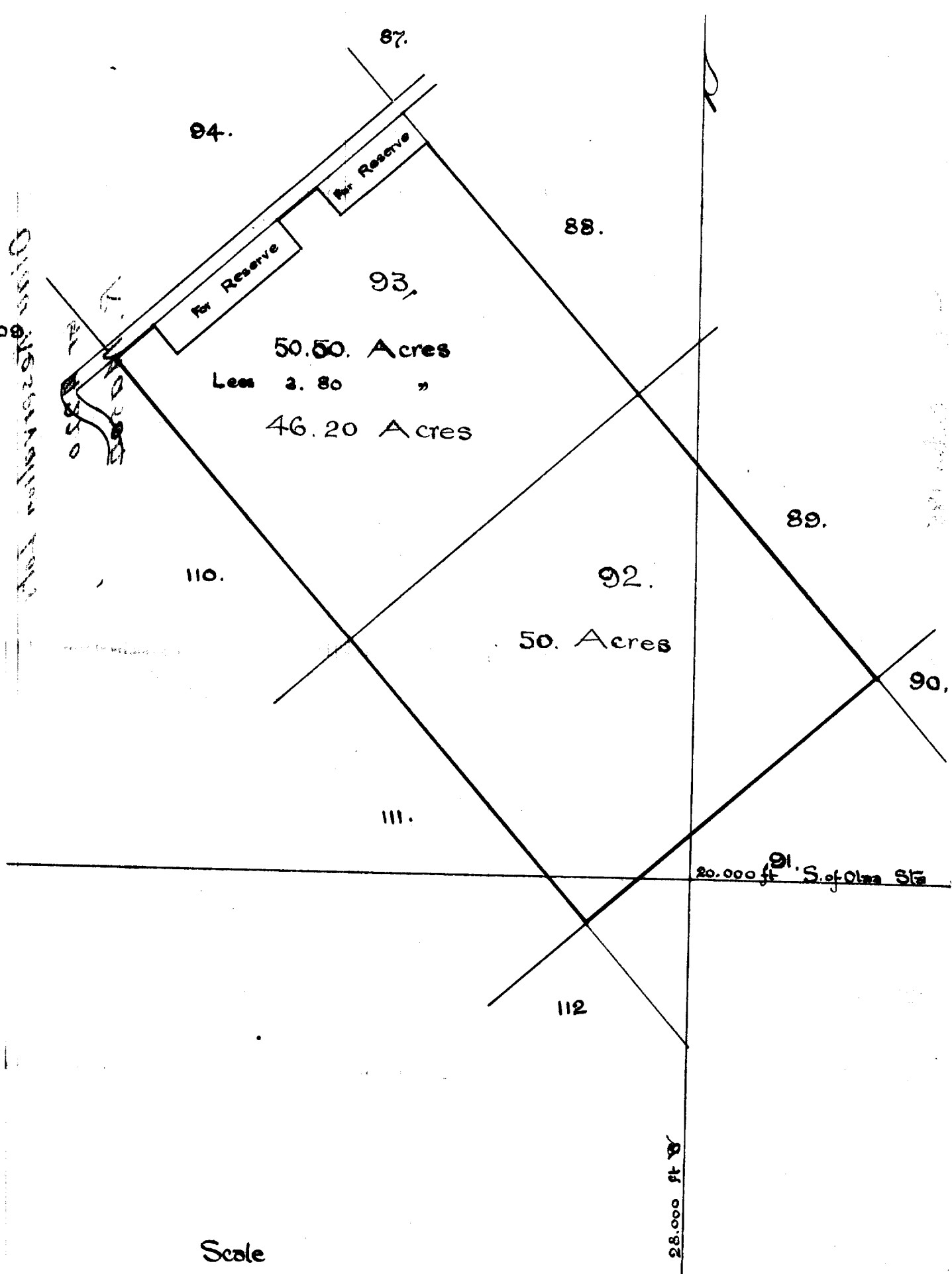
---

Beginning at the West corner of Lot No. 93 on  
 Volcano Road, the coordinates of which point are 18,002.65  
 feet South and 18,307.18 feet West of Oloo 1st Trig. Sta.;  
 and running:-

N. 48° 40' E.	True	200 feet	along the Volcano Road;		
S. 41° 20' E	"	150 "	"	"	Forest Reservation;
N. 48° 40' E	"	650 "	"	"	" "
N. 41° 20' W	"	150 "	"	"	" "
N. 48° 40' E	"	200 "	"	"	Volcano Road;
S. 41° 20' E	"	150 "	"	"	Forest Reservation
N. 48° 40' E	"	450 "	"	"	" "
S. 41° 20' E	"	2754 "	"	"	Lots Nos. 88 and 89;
S. 48° 40' W	"	1500 "	"	"	Lot No. 91;
N. 41° 20' W	"	2904 "	"	"	Lot 111 and 110 to the point of beginning.

Containing 96.2 Acres.

1957 10 15-51  
Original Reservation Map



94.

87.

88.

93.

50.50 Acres

Less 2.80 "

46.20 Acres

89.

110.

92.

50 Acres

90.

111.

20,000 ft S. of Old Sta

112

28,000 ft W

Scale

500. feet = .1. inch