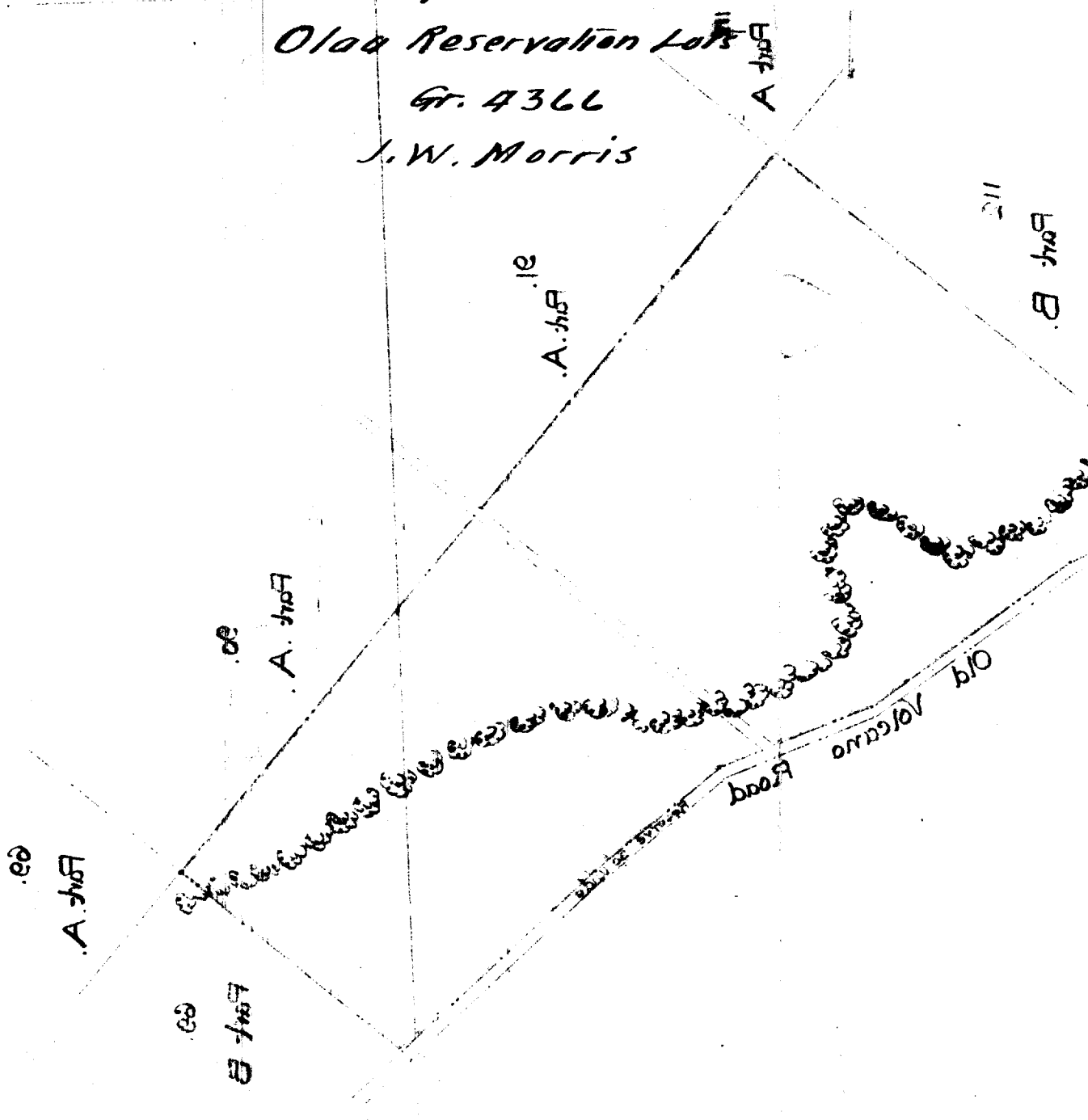


Lots 90B + 91B
Olaa Reservation Lots
Gr. 4366
J. W. Morris



187- File in Carton 185

For Grant to *J. W. Morris*
Purchase Price \$ *269¹⁰*

Notes of Survey and Plan of

Olaa Reservation Lots Nos. 90 Part B & 91 Part B.

Lease No. 118 Ser. B to

J.W. Morris

Beginning at the west corner of Part B Lot No. 91, the same point being east corner of Lot No. 112 Part A, and running:-

N 48° 40' E - (true)- 3030 feet along Lot 91 Part A, crossing
Side Road, and along Part A Lot 90 ;
S 41° 20' E - " - 914 feet along Part B Lot 69 ;
S 40° 45' W - " - 862 " " Old Volcano Road Reserve;
S 38° 14' W - " - 522 " " " " " ;
S 21° 10' W - " - 526 " " " " " ;
crossing Side Road ;
S 34° 6' W - " - 797 " " Old Vol. Road Reserve ;
S 24° 15' W - " - 463 " " " " " ;
N 41° 20' W - " - 1762 " " Part B Lot No. 112, to
the point of beginning

Containing 86.70 Acres, exclusive of side road reserved.

Hilo Hawaii

July 22nd 1899

E. W. Baldwin
Surveyor

