

Lot, 6. Kulla:  
Pohjala Uukill  
Ewa, Oahu

---

# Description of Lot 6 "Kula"

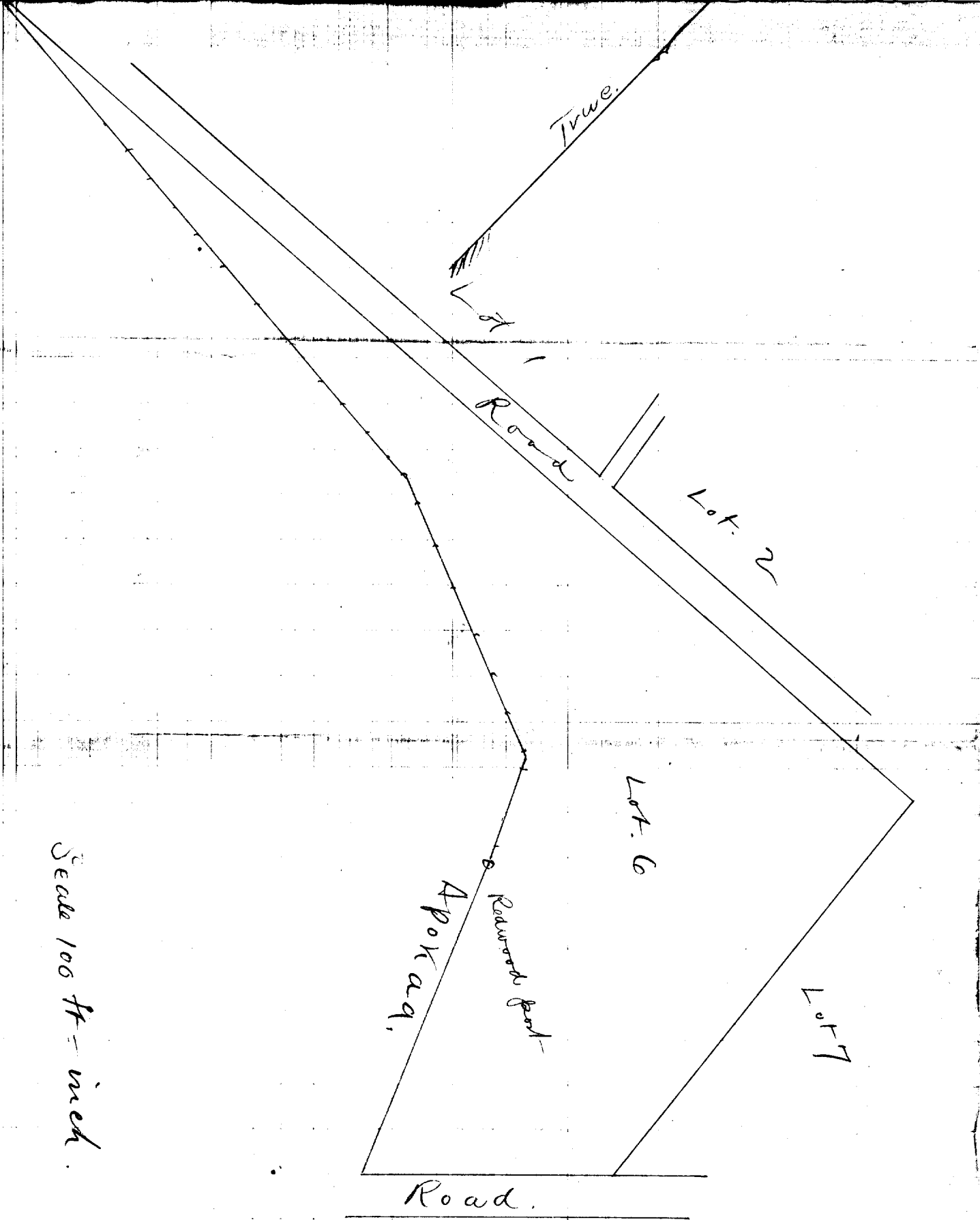
Pouhala, Waikiki, Ewa, Oahu

Beginning at a point at corner of road which is N 22° 14' W true 325 ft from the W corner of Lot 10 and running as follows:—

1. N. 22° 14' W true 206 ft. along Apokoa to redwood post.
2. N 24° 50' W " 88 " " " to corner of fence
3. N 67° 35' W " 220 " " " fence.
4. N 84° 00' W " 490 " " "
5. N 87° 17' E " 930 " " " Road to bend
6. S. 4° 40' E " 370 " " " Lot 7.
7. S 46° 20' W " 188 " " " Road to the initial  
point and containing an area  
of  $3\frac{20}{100}$  acres.

Honolulu Jan 31/96.  
W. A. Wall

Handwritten notes at the top of the page, partially obscured and difficult to read.



Scale 100 ft - inch.