

Lot 69 + Part of 90

Olaa Reservation Lots

Gr. 4358²

~~Allen~~

A. Steininger

6

69

88

185 file in Carton 185

16,000 feet South

12,000 ft W of Olaa Trig Sta

67.

70.

Side Road

68.

69.

78. Acres

89.

90.
Part. A.

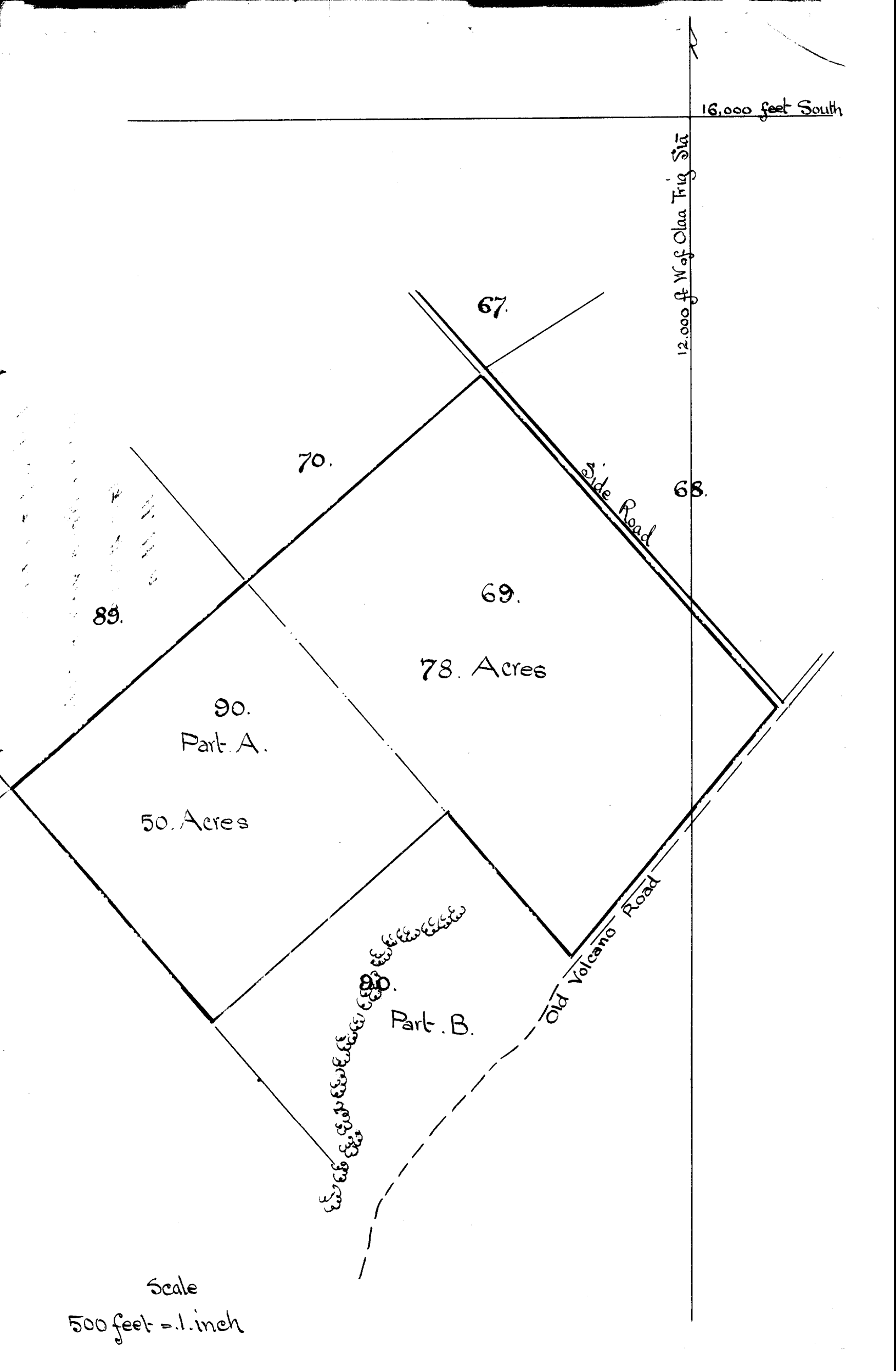
50. Acres

Part. B.

Old Volcano Road

Scale

500 feet = .1. inch



For Grant to J. Steininger.
Purchase Price \$ 384⁰⁰

Notes of Survey and Plan of
Alaa Reservation Lots Nos 69 and Part A Lot 90. 48

Lease No 111 Series B. to

J. Steininger

Beginning at the North corner of Lot No 69, the
coordinates of which point are 17,191.42 feet South
and, 12,989.76 feet west of Alaa Trig Sta; and running;
S 41° 20' E True - 2192. feet along Side Road, to Road
Reservation, along Old Volcano Road;
S 40° 49' W True 1512. feet along Road Reserve;
N 41° 20' W " 914. " " Part B. Lot 90;
S 48° 40' W " 1500. " " " " ;
N 41° 20' W " 1452. " " Side Road
N 48° 40' E " 290 ft. " " Lots Nos 89 and 90 to
the point of beginning;
Containing 128 Acres

Hilo Hawaii

June 27th 1899.

E. W. Baldwin
Surveyor.