

~~4087~~ Lot 54

Notes of Surveys and Plans of
Olaa Lots Nos. 301 Part B, 302 Part B, Lots 311, 303.
Additional Lot No. 54

Part of Lease No. 86 Ser. B, with additional area
to

H. Linn

Olaa, Puna, Hawaii.

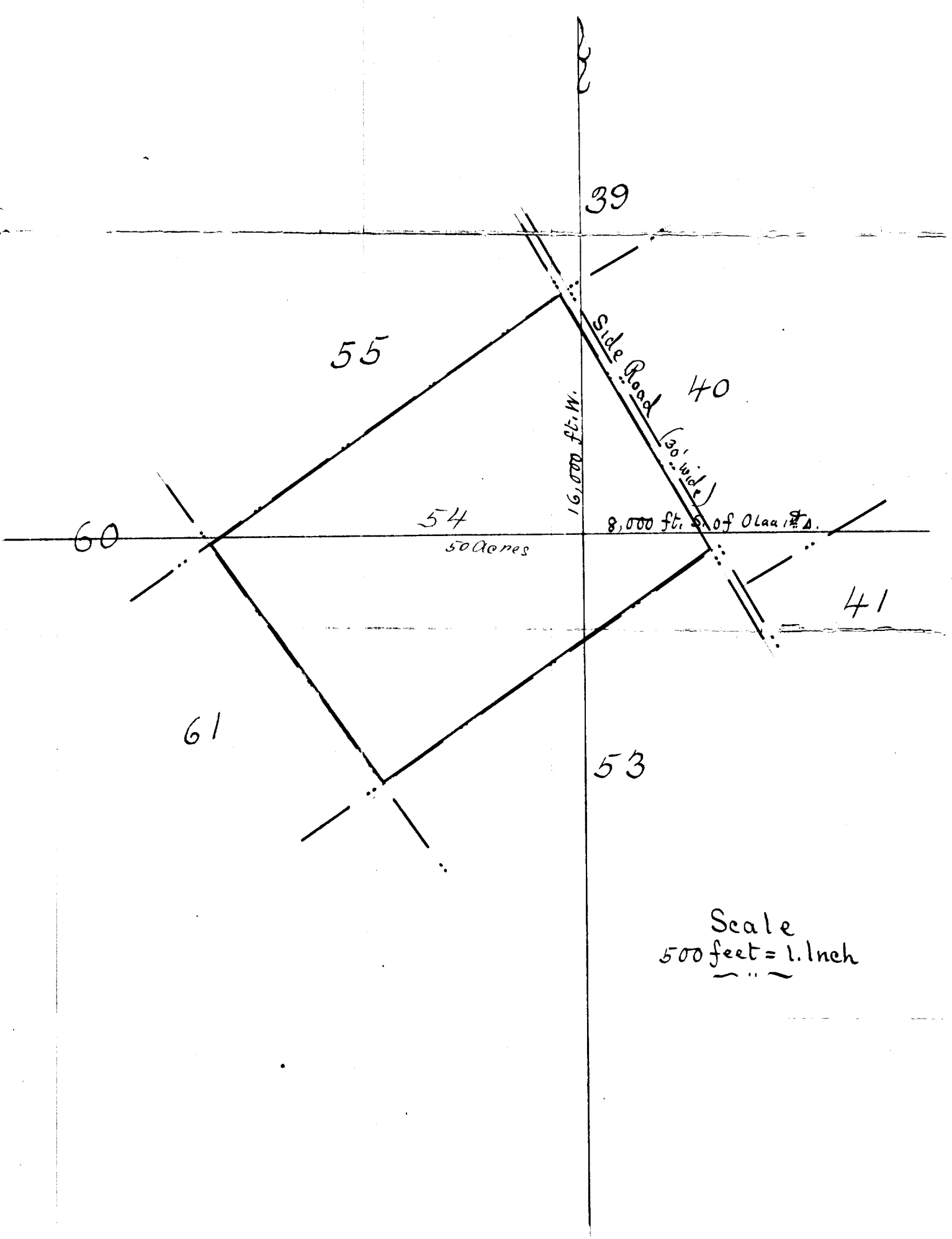
Reg Map 2250

Copy Furnished for Grant

Sept 16

Grant No. 4088

File in Carton 185



39

55

40

16,000 ft. W.

Side Road (30' wide)

54

50 Acres

8,000 ft. S. of Olaa #1 D.

60

41

61

53

Scale
500 feet = 1. inch
~ ~ ~