

Lots 48-67
- Olaa Reservation Lots
Geo Manson et al

Gr 4306
e.o.

Gr 4307
e.o.

Gr 4308
e.o.

Gr 4309
e.o.

Gr 4310
e.o.

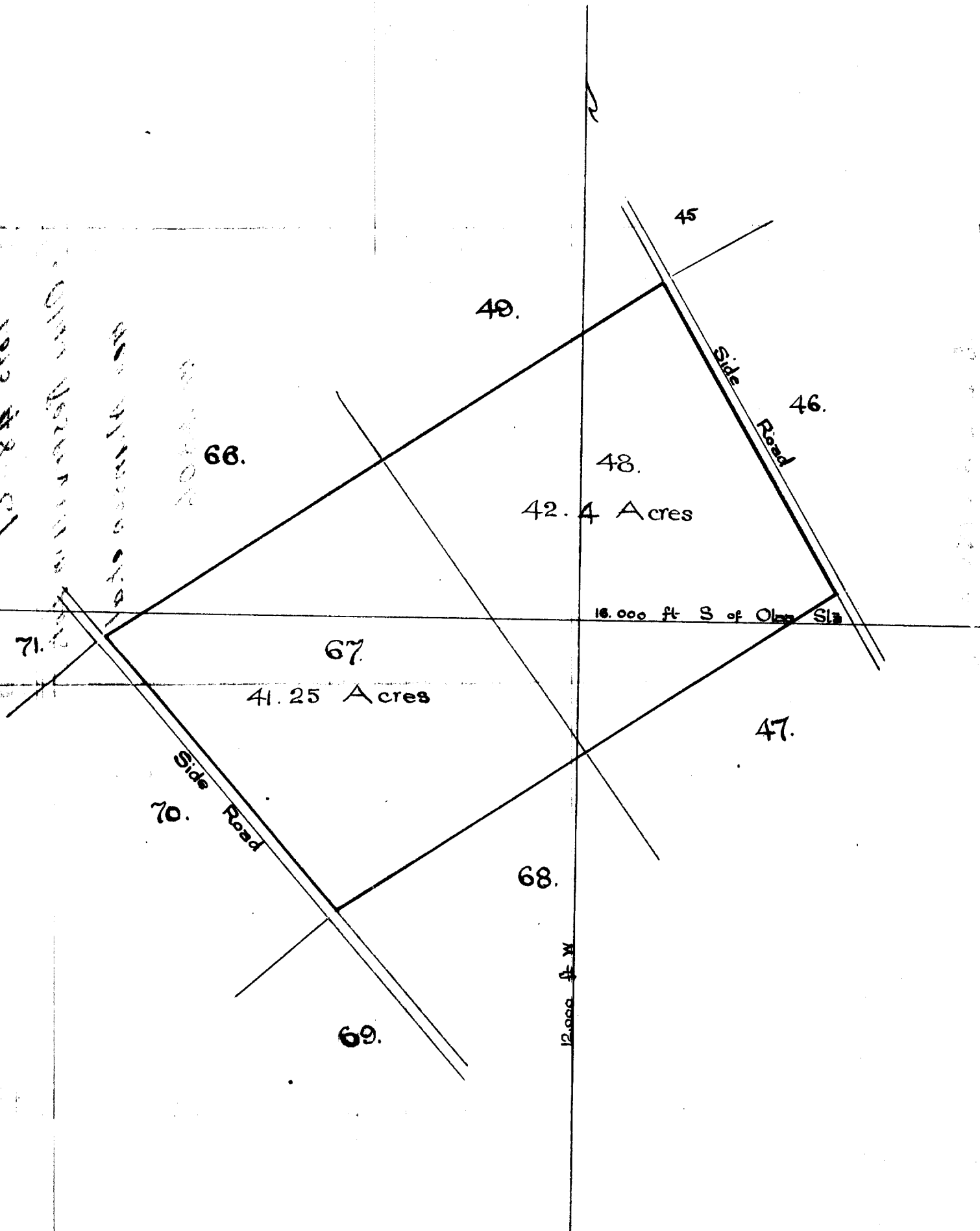
Gr 4311
e.o.

Gr 4312
e.o.

Gr 4313
e.o.

File in Carton 185-A.

1913 43-21
Older Section in 1913
11000 01001
12000 01002



Scale
500 ft = .1. Inch

For Grant to Geo. Manson, W. H. Johnson & D. Thaanum
Purchase Price \$ 334.⁰⁰/₁₀₀

Notes of Survey and Plan of

Alaa Reservation Lots Nos 48. and 67.

Lease No 133. Series B. 6

Geo Manson - W. H. Johnson and D. Thaanum

Beginning at the West corner of Lot No. 67, on Side Road which point is S 41° 20' E True 1452. feet from the Volcano Road, and running;

N 56° 58' E True	2677.	feet along	Side Road, 66 and 49;
S 30° 00' E	1438.	"	Side Road;
S 56° 58' N	2390.	"	Lots Nos 47 and 68;
N 41° 20' N	1452.	"	Side Road, to the

point of beginning;

Containing 83.65 Acres

Hilo Hawaii

July 5th 1898.

E. W. Baldwin
Surveyor