

Duplicate

Lot ~~L~~. Kamaili See

(Appt of A. W. Carter)

Copy Furnished for Grant

Aug 12, 1899

Grant No. 4370

Map 2075

See CSF 14283

File in Carbon 194

Grant to *Alfred W. Carter*
 Purchase Price \$ *450.⁰⁰*

(191009. W. O. to 1998)
100' 110000'
100' 110000'

NOTES OF SURVEY OF LOT 4. (App. A. W. CARTER.)

Public Lands Map 2. Kamehameha, Hawaii

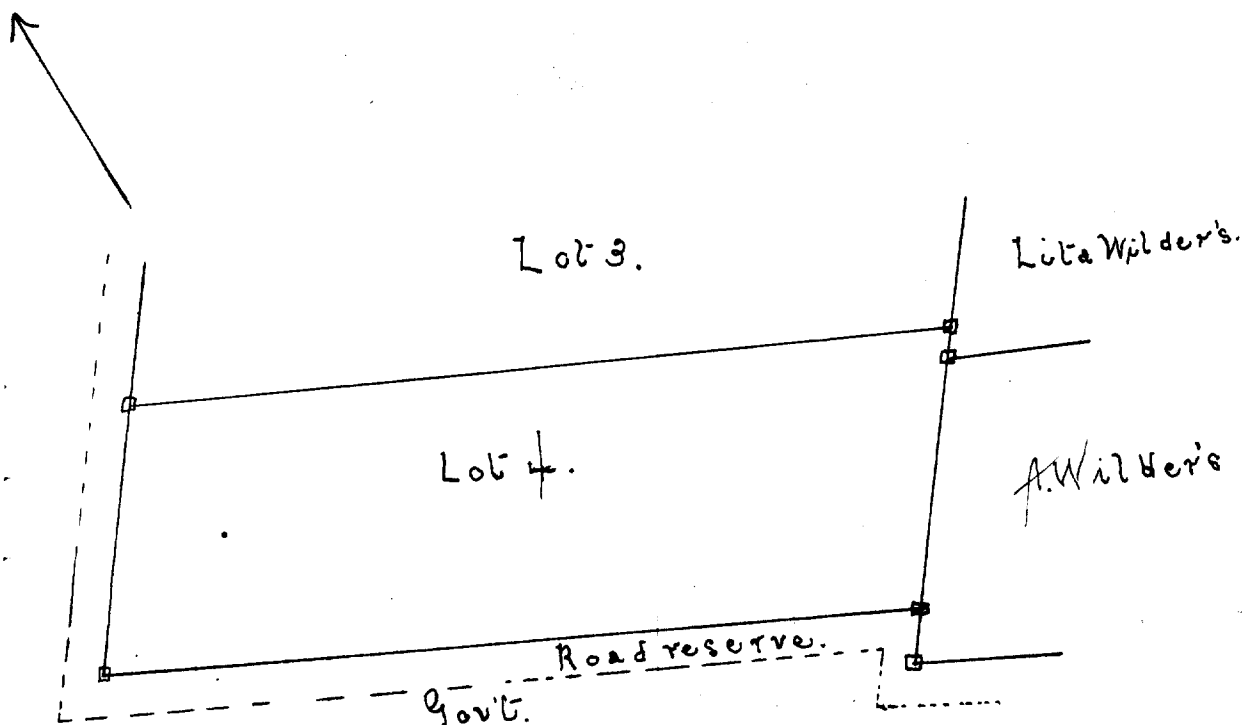
Commencing at a point N. 37° 30' East (true) 260 feet distant from the N. W. corner of Lita Wilder's land, and run along said land.

North 37° 30' East (true) 1466 feet.
 " ¹¹⁴ 65° ⁴⁵ 15' West " 4457 " along Lot 3. thence
 South 37° 30' " " 1466 " to a point on the Western edge of a deep crater.
 " 65° 15' East " 4457 feet along Government land to the initial point.

Area 150 Acres.

F. Wm. Thrum.

Nov. 1895.



1000 Ft. = 1 in.