

KAMEHAMEHA HIGHWAY

2ND UNIT SECTION 1

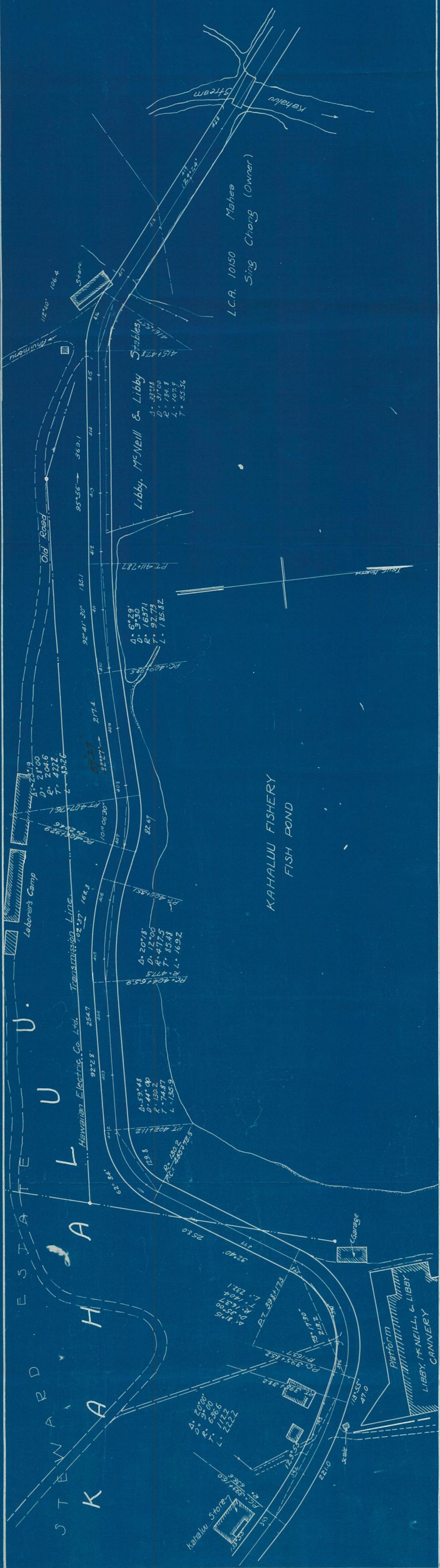
LOCATION OF 50 FT RIGHT OF WAY

STA 311+19 TO STA 418+00

Scale 1"=100'

Sept 25, 1921.

84-173



ESTABLISHED
K A H A L U

Leborer's Camp

Hawaiian Electric Co. Ltd. Transmission Line

Old Road

Stables

Libby, McNeill & Libby

Kahalu Fishery Pond

Kahalu Stream

L.C.A. 10150 Mahea Sing Chong (Owner)

Platform LIBBY, McNEILL, & LIBBY CANNERY

Kahalu Store

Garage

Trail Marker

PC 402+112
PT 402+112
R 130.2
D 44°00'
Δ 159°48'

PC 404+55.9
PT 404+55.9
R 477.5
D 12'00"
Δ 20°48'

PC 411+78.7
PT 411+78.7
R 185.32
D 92.73
T 92.73
L 185.32
Δ 6°29'

PC 415+47.3
PT 415+47.3
R 189.8
D 31'00"
Δ 33°38'

PC 418+00
PT 418+00
R 107.9
D 107.9
T 55.56
L 107.9
Δ 55°56'

PC 398+173
PT 398+173
R 140.1
D 91°05'
Δ 81°05'

PC 353+55
PT 353+55
R 222.2
D 112.2
T 222.2
L 222.2
Δ 96°00'

PC 282+60
PT 282+60
R 686.6
D 123°55'
Δ 123°55'

PC 258+192
PT 258+192
R 165.7
D 95°18.52'
Δ 95°18.52'

PC 210+00
PT 210+00
R 470
D 13°35'
Δ 13°35'