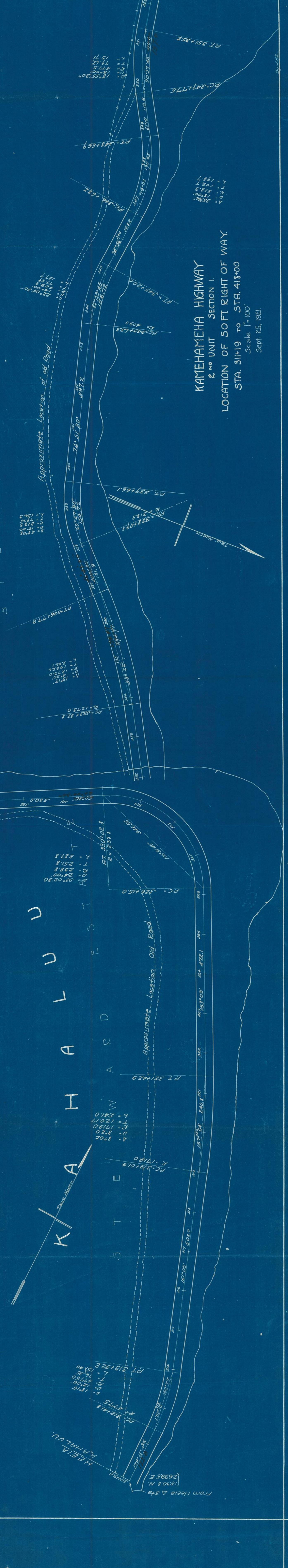


S T E W A R D E S T A T E

K A H A L U U



**KAMEHAMEHA HIGHWAY**  
 2<sup>ND</sup> UNIT SECTION I.  
 LOCATION OF 50 FT. RIGHT OF WAY.  
 STA. 311+19 TO STA. 413+00  
 Scale 1"=100'  
 Sept. 25, 1921.

Approximate Location of Old Road

Approximate Location Old Road

L = 171.5  
 T = 18.00  
 R = 477.5  
 Δ = 18.10  
 PC = 313+92.2  
 PT = 313+92.2

L = 241.0  
 T = 120.17  
 R = 1719.0  
 Δ = 3.20  
 PC = 319+01.9  
 PT = 321+42.9

L = 13.17  
 T = 12.30  
 R = 495.1  
 Δ = 13.17  
 PC = 333+82.8  
 PT = 336+77.9

L = 156.72  
 T = 171.5  
 R = 33810.8  
 Δ = 156.72  
 PC = 343+6.23  
 PT = 345+20.0

L = 198.7  
 T = 102.7  
 R = 318.3  
 Δ = 18.00  
 PC = 349+77.5  
 PT = 351+35.2

L = 156.72  
 T = 171.5  
 R = 33810.8  
 Δ = 156.72  
 PC = 343+6.23  
 PT = 345+20.0

L = 156.72  
 T = 171.5  
 R = 33810.8  
 Δ = 156.72  
 PC = 343+6.23  
 PT = 345+20.0

L = 198.7  
 T = 102.7  
 R = 318.3  
 Δ = 18.00  
 PC = 349+77.5  
 PT = 351+35.2

L = 156.72  
 T = 171.5  
 R = 33810.8  
 Δ = 156.72  
 PC = 343+6.23  
 PT = 345+20.0

L = 156.72  
 T = 171.5  
 R = 33810.8  
 Δ = 156.72  
 PC = 343+6.23  
 PT = 345+20.0

L = 198.7  
 T = 102.7  
 R = 318.3  
 Δ = 18.00  
 PC = 349+77.5  
 PT = 351+35.2