

(REVISED AUGUST 1951)

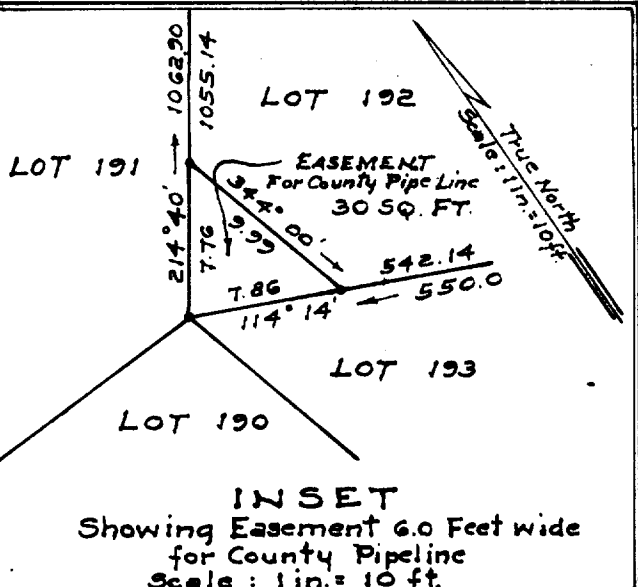
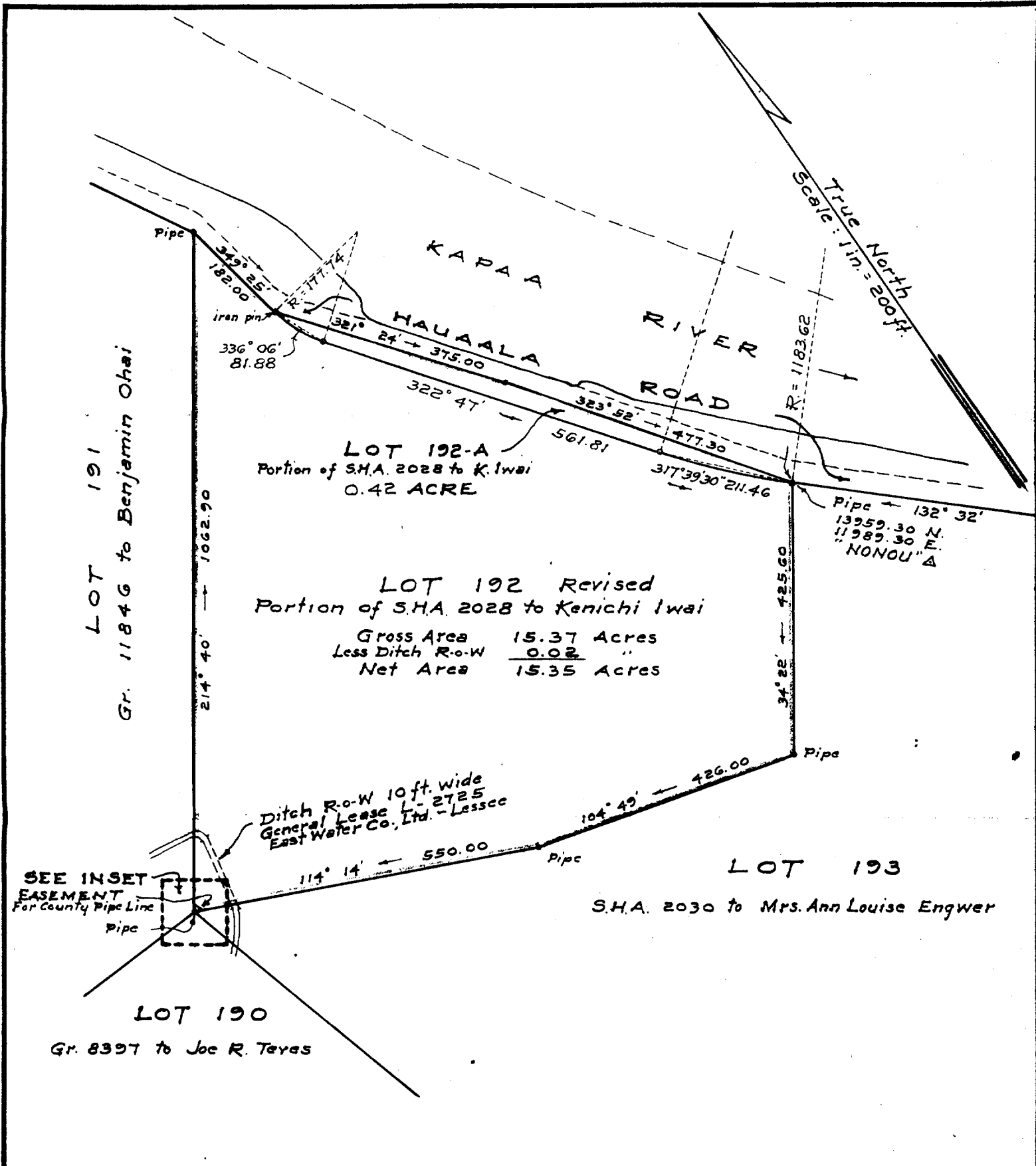
TRACING ONLY

Lots 192 and 192-A,
Kapaa Hmstds. 4th Series
Kapaa, Kona (Kawaihau), Kauai

Furnished Land Office
Sept. 4, 1951

Folder 148-A

CARTON 14



(Revised August 1951)
Lot 192 Revised and
Lot 192-A required for the
Realignment of Hauaala Road
Kapaa Homesteads 4th Series
Kapaa, Puna (Kawaihou), Kauai
Scale 1 in. = 200 ft.