

**BY AUTHORITY**  
 PUBLIC LAND NOTICE  
 On Saturday, July 25, 1899, at 12 o'clock noon, at the front entrance of the Judiciary Building, will be sold at Public Auction, the lease of pieces of Government land, situated on the main side of Lot 13A, Wahiawa, Waialua, Oahu, containing an area of 10 acres, a little more or less.  
 Term: Lease 21 years.  
 Taxes: Value, fifty cents per acre per annum, payable semi-annually in advance.  
 For further particulars as to conditions of lease, etc., apply at the Public Land Office, Honolulu.  
 ED. S. BOYD,  
 Commissioner of Public Lands,  
 The Land Office, Honolulu, T.H.

Tracing from  
Public Land Map No 25.

GRANT 973.

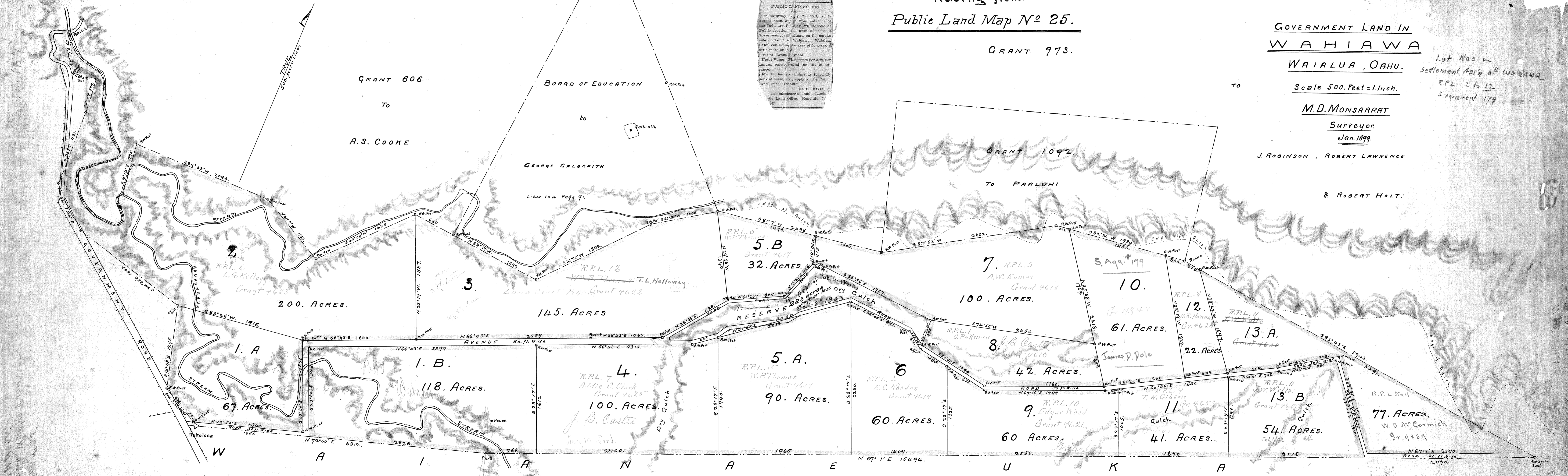
GOVERNMENT LAND IN  
WAHIAWA

WAIALUA, OAHU.  
 Lot Nos in Settlement Ass'y of Wahiawa RPL 2 to 12 5 Agreement 179

To  
M.D. MONSARRAT  
 Surveyor.  
 Jan. 1899.

J. ROBINSON, ROBERT LAWRENCE

& ROBERT HOLT.



Reg No 67  
 P. H. 27  
 17' x 48" = 8630 FT.