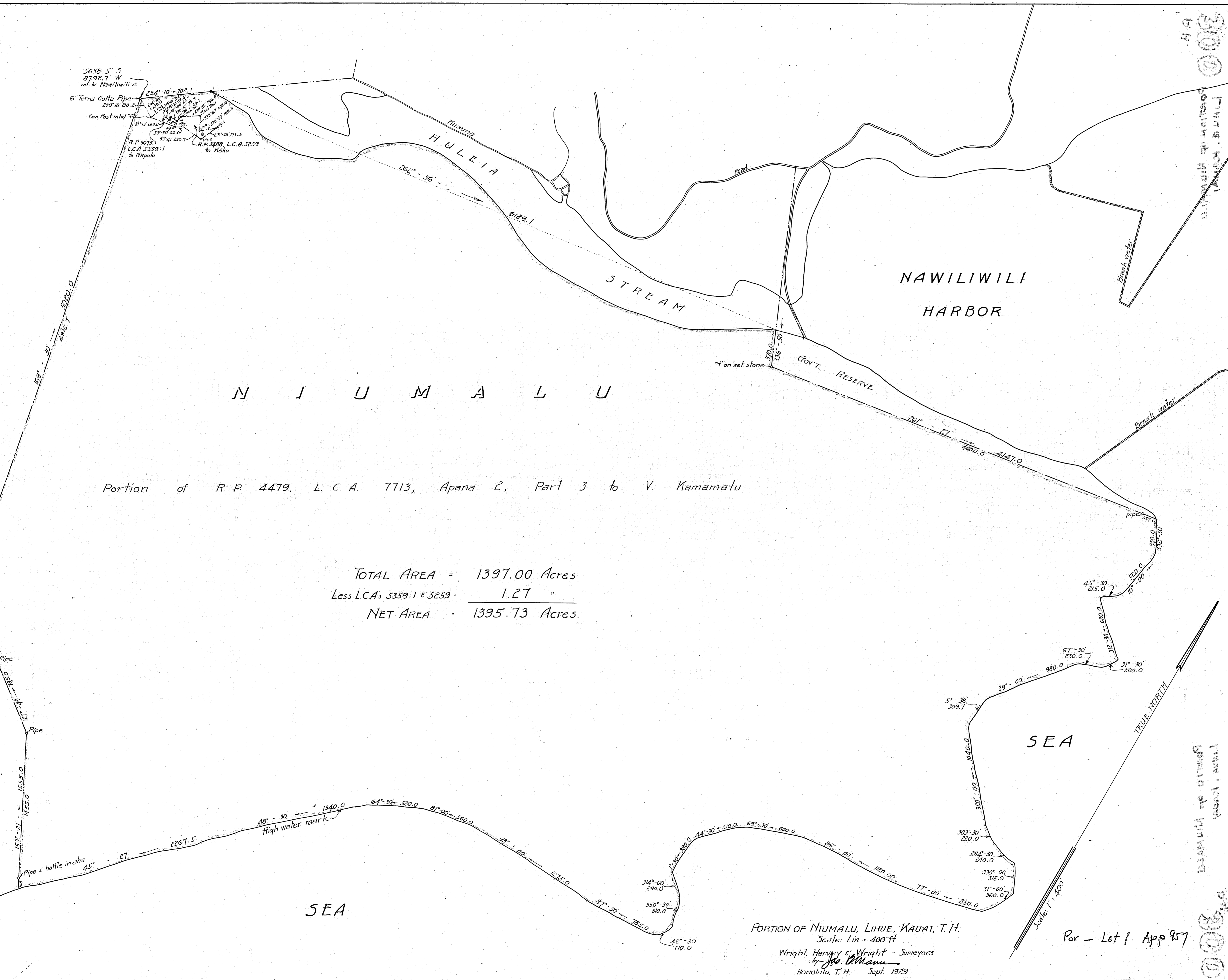


LINE 'KAWAI
PORTION OF NIUMALU
300
b.H.

R. P. 4482, L. C. A. 7713, Apana 2 to V. Kamamalu.



5638.5' S
8792.7' W
ref. to Nawiiliwi Δ
6" Terra Cotta Pipe
299' 10" Dia. 2'
Con. Post mhd 7"
R.P. 3675
L.C.A. 5359:1
to Napolo
R.P. 3488, L.C.A. 5259
to Meko

Portion of R. P. 4479, L. C. A. 7713, Apana 2, Part 3 to V. Kamamalu.

TOTAL AREA = 1397.00 Acres
Less L.C.A's 5359:1 & 5259 = 1.27
NET AREA = 1395.73 Acres.

PORTION OF NIUMALU, LIHUE, KAUAI, T. H.
Scale: 1 in = 400 ft
Wright, Harvey & Wright - Surveyors
by *J. P. Mann*
Honolulu, T. H. Sept. 1929.

Per - Lot 1 App 957

LINE 'KAWAI
PORTION OF NIUMALU
300
b.H.