

LOT 0
MAP 20a

Copy furnished Land Office
June 20, 1906.

File in Carton 25-A.

L O T O , M A P 2 0 a

Beginning at an Ohia post at the Eastern edge of new road from

Nahiku Landing, at the S. W. corner of Lot N, ~~and running~~ *the cardinal reference*
to the station "Ohia" being 5770 ft. S. 7 1352 ft. W. (approx), as shown on Public Lands Map, 2000, and showing

1.) S 61 10'E.(TRUE) 409 ft. along Lot N to an Ohia post at the West-
 ern edge of Kuhiwa Gulch;

2.) Thence along Western edge of Kuhiwa gulch to an Ohia post on a
 small hill at brink of gulch, which is N.E. corner of Lot 28., direct
 bearing and distance being

S 31 11'W.(TRUE) 678 ft.

3.) N 61 15'W.(TRUE) 474 ft. along Lot 28 to an Ohia post at South
 corner of Lot P ;

4.) N 28 45'E.(TRUE) 525 ft. to an Ohia post at east corner of Lot P
 at makai edge of new road just above
 above turn;

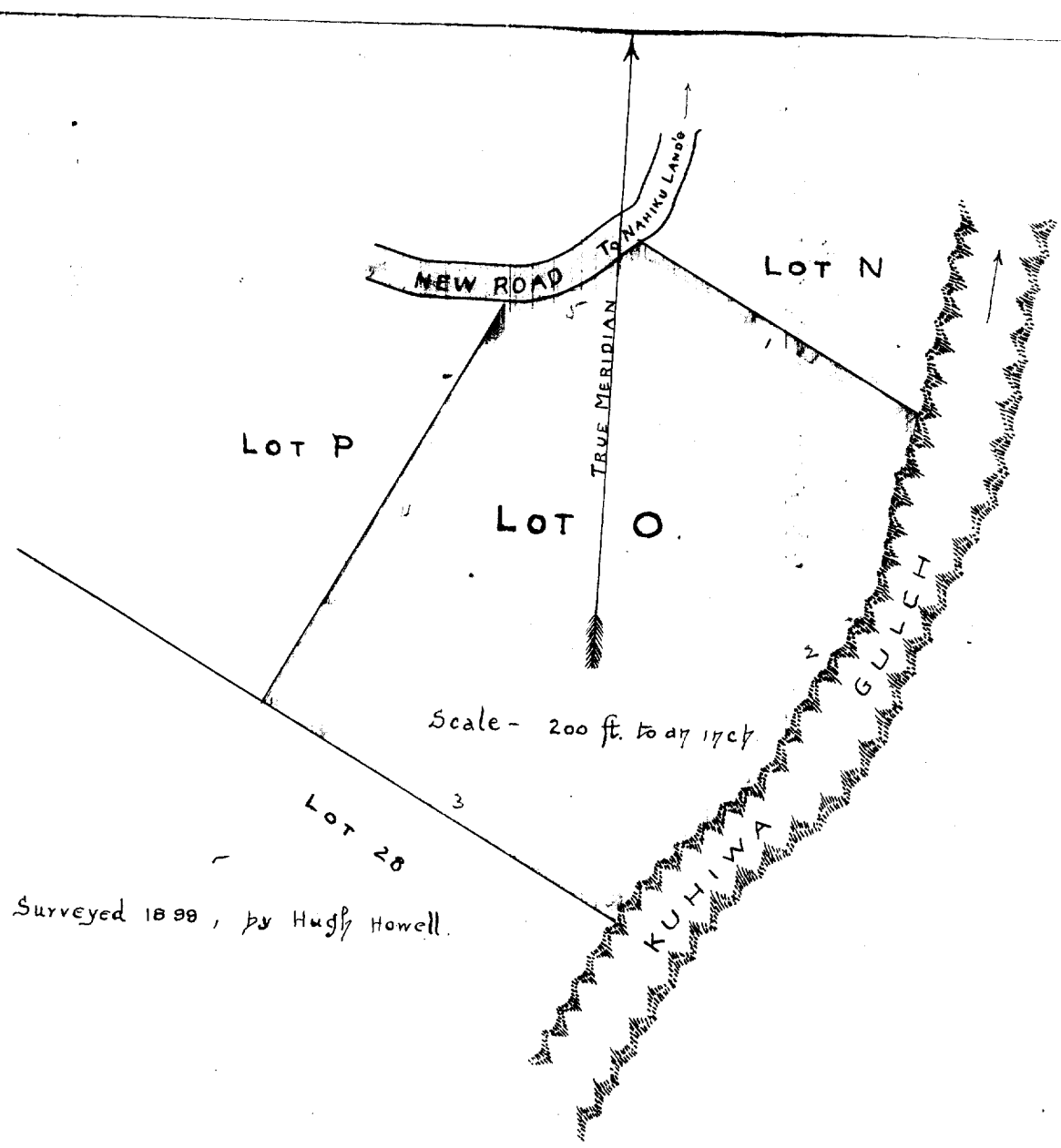
5.) Along mauka edge of new road, following the turn thereof, 20 ft.
 from center line, to initial point, direct bearing and distance being
 N 60 56'E.(TRUE) 179 ft.

Area 8 Acres, more or less.

Corrected additions by direction by surveyor H. E. Wall made June 19, 1906.

<i>N</i>	<i>S</i>	<i>E</i>	<i>W</i>	<i>Area</i>
7715.3	777.2	767.2	766.7	<i>act.</i>

Newton (June - 1906)



Surveyed 1899, by Hugh Howell.