

Lot F
MAP 20a

Copy furnished Land Office
Oct. 16, 1906.

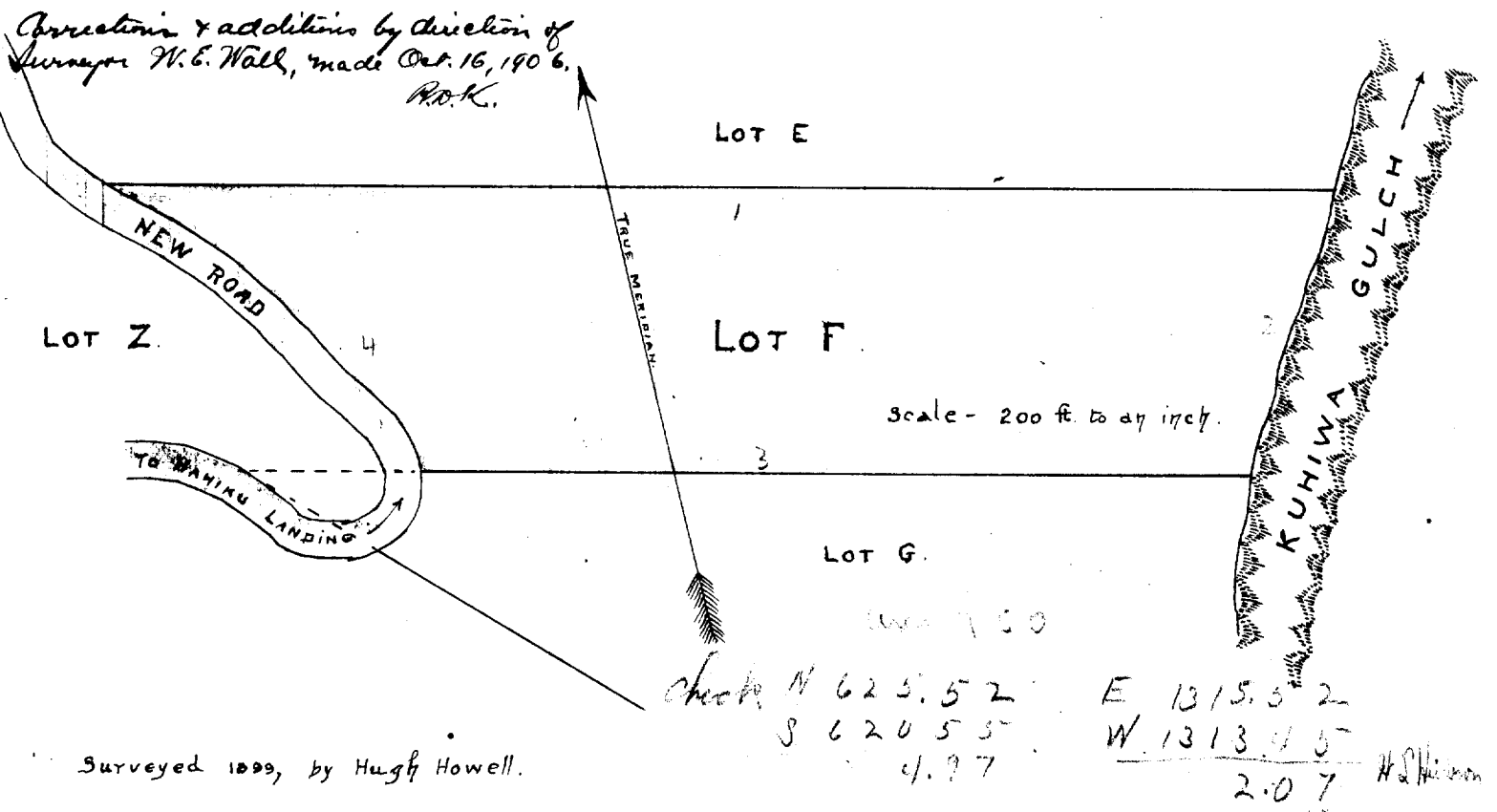
File in Carton 25-A.

LOT F , MAP 20 a.

Beginning at an Ohia post on Eastern edge of new road from Nahiku Landing, which is S.W. corner of lot E, ~~and running~~ *the coordinates referred to Trig. Station "Opikala" being 2360 ft. South + 1269 ft. West (approx.), as shown on Public Land map 20a, and running:*

- 1.) S 74 50'E (TRUE) 1363 ft. along lot E. to an Ohia post at Western edge of Kuhiwa Gulch;
- 2.) S 36 53 'W (TRUE) 330 ft. along Western edge of said gulch to an Ohia post at N.E. corner of Lot G.
- 3.) N 74 50'W (TRUE) 824 ft. along Lot G to an Ohia post at Eastern edge of new road;
- 4.) Thence along Eastern edge said road 20 ft. from the center line, to initial point, direct bearing and distance being N 37 58' W (TRUE) 520 ft.

Area, 8 Acres, more or less.



Surveyed 1899, by Hugh Howell.