

LOT E

MAP 20 a.

*Copy furnished Land Office
Jan. 25, 1906.*

File in Carton 25-A.

LOT E, MAP 20 a.

Beginning at an Ohia post at the Eastern edge of new road from Nahiku

Landing, at S.W. corner of Lot D, and ~~running~~ *the coordinates referred to*
Dep. Station "Opukouka" being 2108 ft. S. and 1273 ft. W. (approx.), as shown on Public
Land map No. 20 a, and running

- 1.) S 74 50'E (TRUE) 1464 ft. along Lot D to an Ohia post at Western edge of Kuhiwa Gulch;
- 2.) S 22 34'W.(TRUE) 247 ft. along Western edge of said gulch to an Ohia post at N.E. corner Lot F ;
- 3.) N 74 50'W.(TRUE) 1363 ft. along Lot F to an Ohia post at Eastern edge of new road;
- 4.) Thence along Eastern edge of said road, 20 ft. from the center line; to the initial point, direct bearing and distance being
 N 1 15'W.(TRUE) 253 ft.

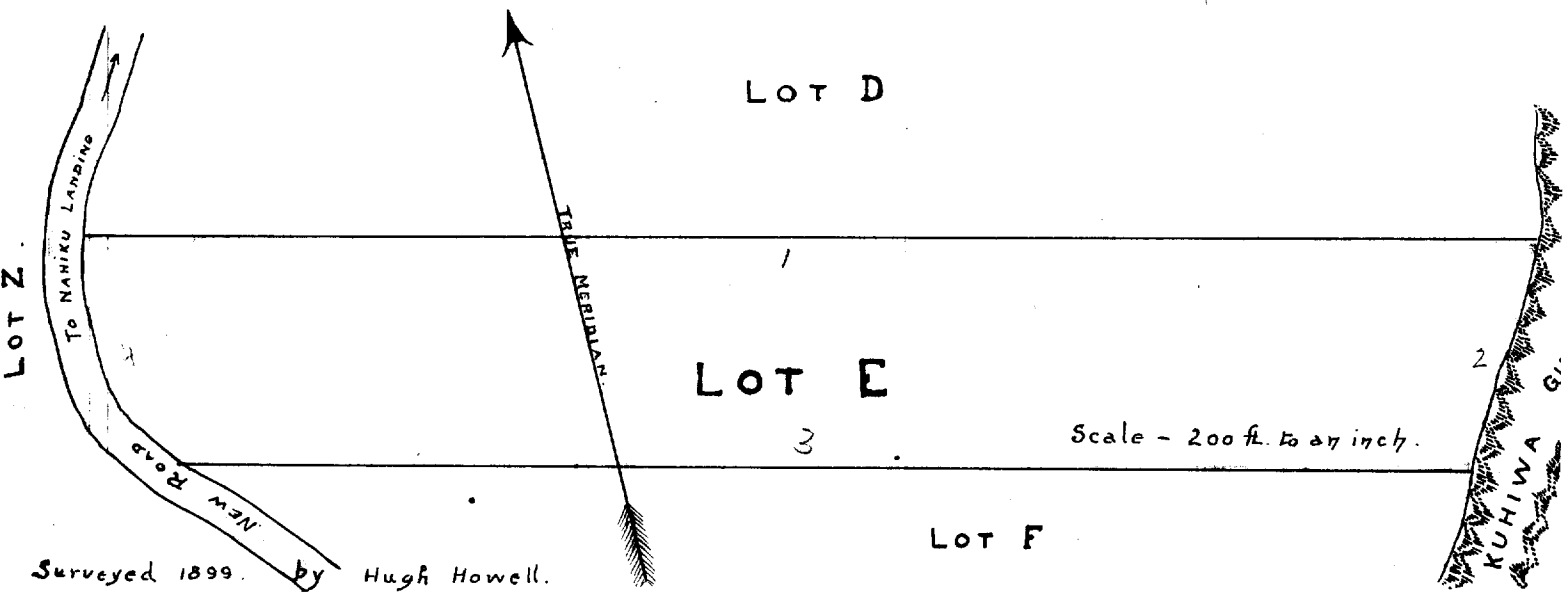
Area, 8 Acres, more or less.

Corrections and additions by direction
Surveyor W. E. Wall made June 19, 1906.

W.H.H.

70	609.4	611.1	1413.6	1410.6

1906



Surveyed 1899. by Hugh Howell.