

*LOT B*  
*MAP 20a*

File in Carton 25-A.

LOT B, MAP 20 a.

Beginning at a rock marked with a cross which is the N.E. corner of Gt. 1818, on mauka edge of old Govt. road, from which H.G.S. Trig. Station Opikoula bears N. 13 48' E. (TRUE) distant 983.5 ft. and running

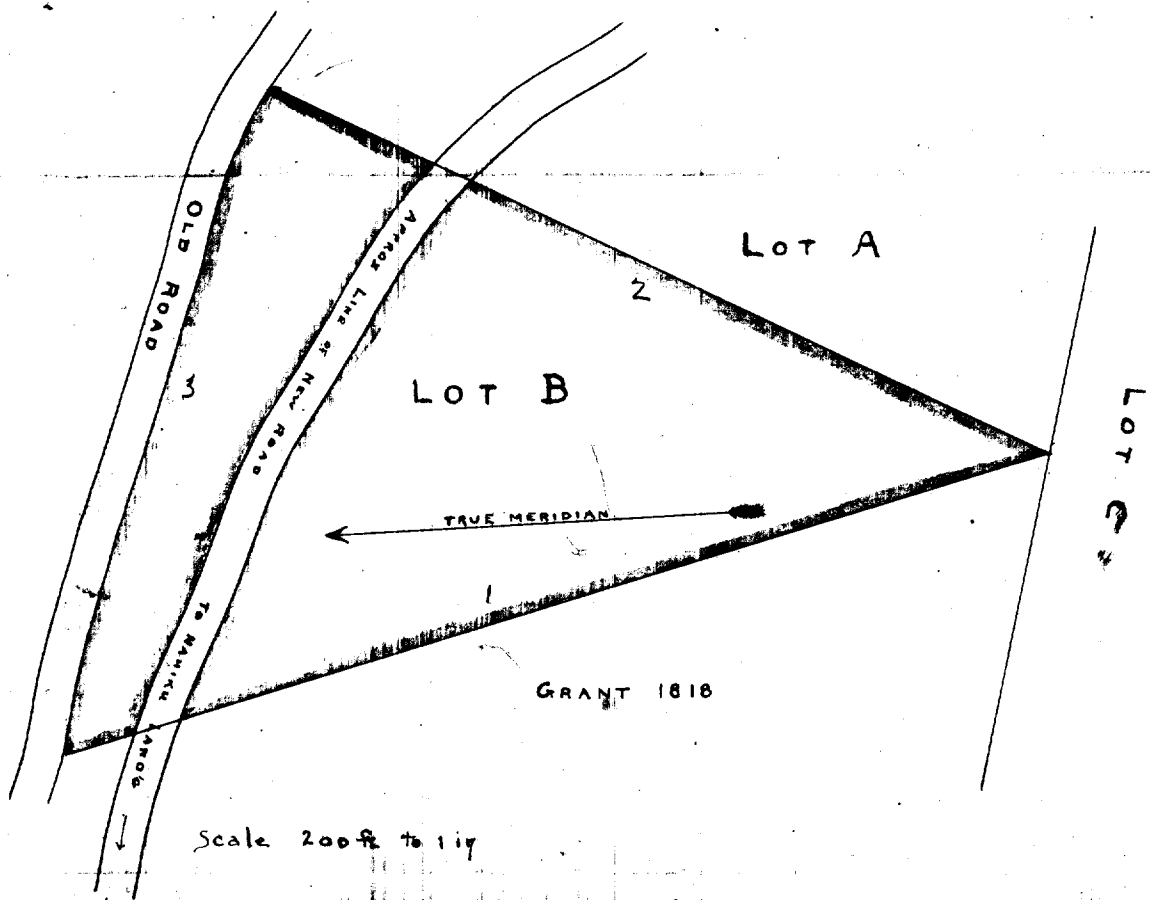
- 1.) S 13 32' E (TRUE) 1068 ft. along said Gt. 1818 to an Ohia post in pile of stones (at S.E. corner of said gt. also) on boundary of Lot C;
- 2.) N 28 57' E (TRUE) 892 ft. along Lot A to a large rock at mauka edge of old Govt. road, from which H.G.S. Trig. Station Opikoula bears N. 20 09' W (TRUE) distant 1288 ft.
- 3.) N 69 30' W (TRUE) 725 ft. along mauka edge of old Govt. road to initial point;

EXCEPT a strip 40 ft. wide for a new road which may be built through this lot, in which case the boundaries of this lot may be extended makai to include all of the old road adjoining side (3).

Area, 7.3 acres, more or less.

N. 5. E. W.  
1036.9 - 1038.3 - 677.1 - 679.1  
S. H. J. 5/8/12.

Lot B



Scale 200 ft to 1 in

Surveyed 1899 by Hugh Howell.

GRANT 1818

Lot A

Lot B

Lot C

OLD ROAD

APPROX LINE OF NEW ROAD

TRUE MERIDIAN

TO MARINE ANCHOR

Z

I