

Kampo Goot Lots
Lot. 6.

Copy furnished
Public Land Office
May 31st - 1901

Grant No. 4483-

TO Elmer E. Paston
Date. June 28, 1901

File in Carton 34.

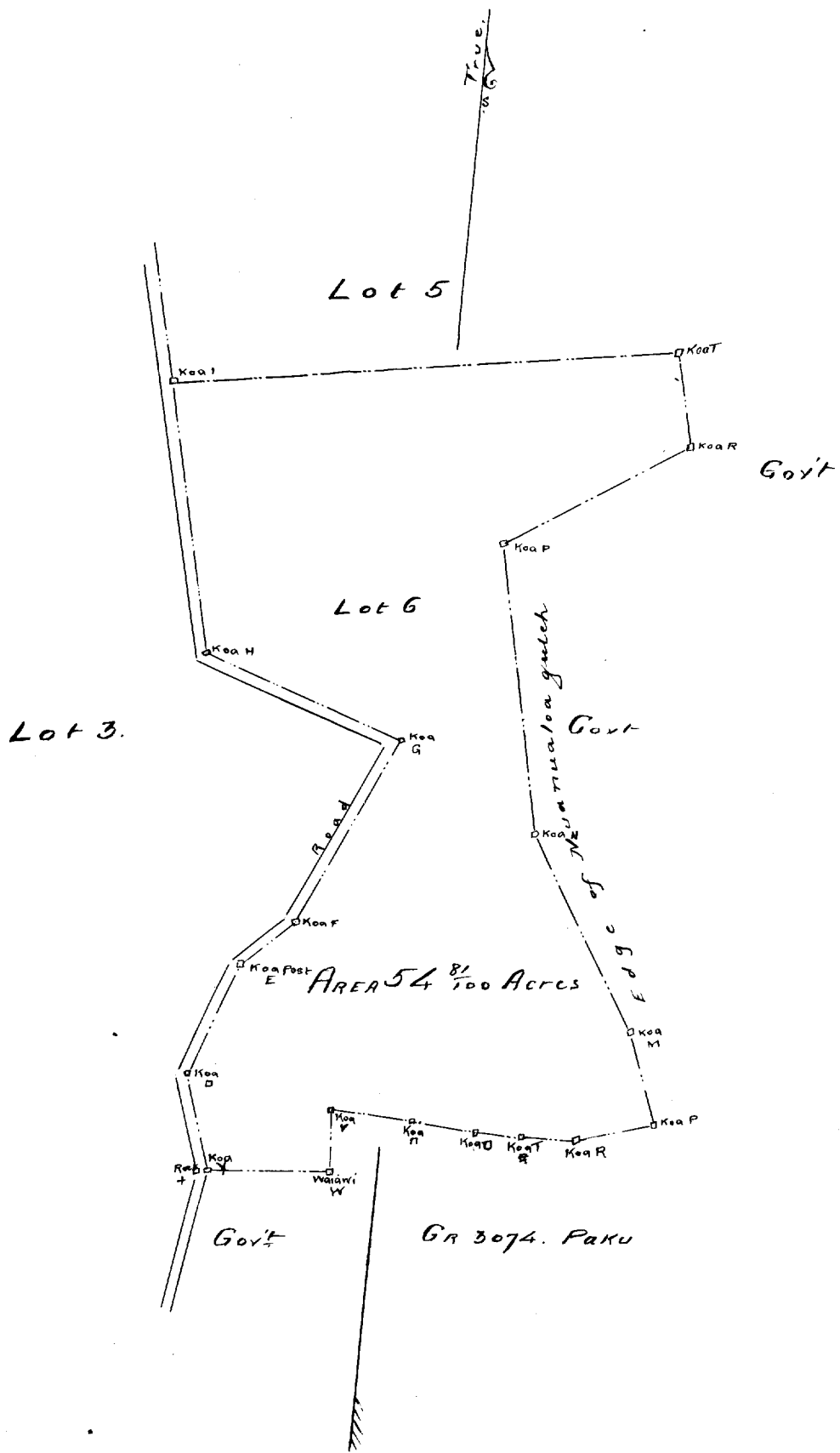
Description of Government Lot 6: Kaupo, Maui.

Beginning at South West corner of this lot, on road, at Koa tree marked V; being 30 feet east of rock + the South east corner of Lot 3, and running by true bearings;

- | | | | | |
|----|-----------|----------|-------------------------------------|----|
| 1 | N 17 30 W | 302 feet | along road 30 feet wide to Koa tree | □; |
| 2 | N 20 0 E | 380 " | do do do | E; |
| 3 | N 47 20 E | 217 " | do do do | F; |
| 4 | N 25 0 E | 641 " | do do do | G; |
| 5 | N 71 0 W | 650 " | do do do | H; |
| 6 | N 12 45 W | 832 " | do do do | I; |
| 7 | N 81 30 E | 1553 " | do Lot 5 do | T; |
| 8 | S 12 45 E | 290 " | do Government do | R; |
| 9 | S 57 20 W | 646 " | do do do | P; |
| 10 | S 11 20 E | 899 " | do do do | N; |
| 11 | S 30 50 E | 676 " | do do do | M; |
| 12 | S 19 32 E | 295 " | do do do | P; |
| 13 | S 73 42 W | 242 " | do Grant 2074 Paku do | R; |
| 14 | S 86 0 W | 171 " | do do do | T; |
| 15 | Due West | 147 " | do do do | U; |
| 16 | N 85 40 W | 194 " | do do do | □; |
| 17 | N 88 0 W | 245 " | do do do | V; |
| 18 | S 5 45 W | 191 " | do do to waiawai tree | W; |
| 19 | S 84 20 W | 369 " | do land of Mitimiki to the initial | |

point, and containing an area of
54 ⁸/₁₀₀ acres. S. M. Kana'ana

Honolulu
Sept 28th 1895



Scale 500 Feet = 1 inch