

Lot 52

Ninole & Waialea, Kau.  
Homestead Map. 17.

Grant No. 6367.

TO J. H. Kalohi

Date Apr-15-1915

Copy furnished Land Office  
March 29 1915.

✓  
file in carton.

# Description of Lot 52.

Kinohā & Wailau. Kaw. Homestead Map. '7.

Beginning at a point marked  $\square$  on rock, which is 13910 feet North and 12213 feet West from Goot Survey Station, <sup>as shown on Homestead Map No. 17 on file in the Office of the</sup> and running as follows:—

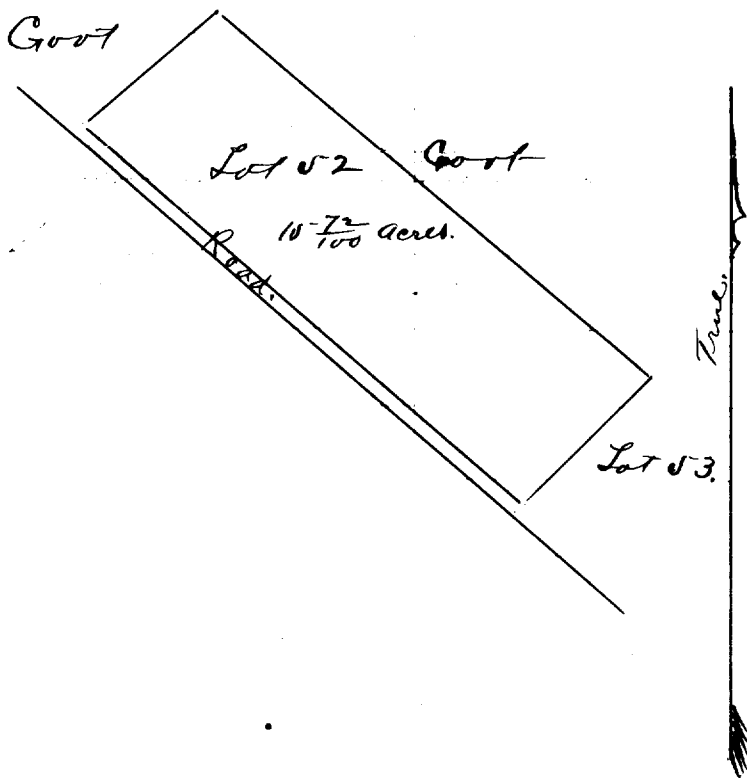
1. S. 45° 15' W. true 470 feet along Lot 53.
2. N 49° 45' W " 1520 " " Road.
3. N 49° 10' E " 463 " " Goot land;
- \* 4. S. 50° 20' E " ~~1472~~<sup>1490</sup> " " Goot <sup>land</sup>; to initial

point, and containing an area of  $10 \frac{72}{100}$  acres.

Aug. 25<sup>th</sup> 1892.

W. A. Wall

\* Changed by Newton - March 1907



Scale 500 ft = 1 inch.

12241.8    12821.0    14971.3    1492.9

10/26/1892

*[Handwritten signature]*