

Lot 51  
Ninole & Wailau. Kan.  
Homestead Map. 17.

Grant No.

TO

Date.

Copy furnished Land Office  
July 12, 1907.

Grant 5039

Charles E. Stone

✓  
file in Cartm 1.

# Description of Lot 51.

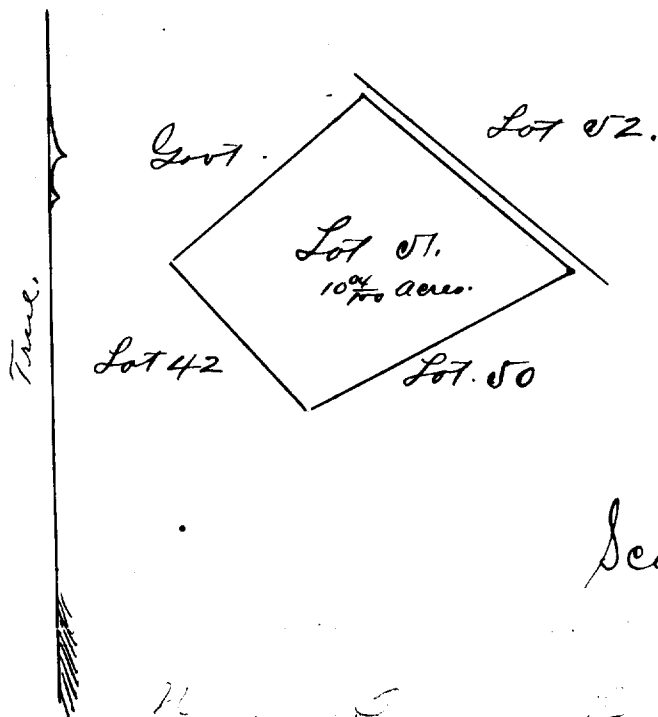
Kinole & Wailau. Kaw Homestead Map. 17.

Beginning at a point which is 13710 feet North and 13873 feet West from South Survey Station <sup>as shown on Homestead Map No. 17.</sup> Pukhu, and running as follows.

1. N. 63° 30' E true 790 feet along Lot 50;
2. N 49° 45' W " 720 " " Road;
3. S. 49° 10' W " 660 " " South land;
- \* 4 S. 41° 20' E " <sup>520</sup> 510 " " Lot 42 to initial point and containing an area of  $10 \frac{04}{100}$  acres.

Aug. 25<sup>th</sup> 1892,  
C. W. A. W. A. L.

\* Changed by Newton - March 1907



Scale 500 ft = 1 inch.

N	S	E	W	Area
1050.4	822.0	1050.4	1048.9	OK

700 - 700 - 700 - 700