

Lot 50.

Ninole & Waitaw. Kaw.

Homestead map 17.

Grant No. 8856

TO Kahinane Kunipo

Date. Aug. 25 1926

Copy furnished Land Office  
Feb. 6<sup>th</sup> 1920

✓  
File in Carton 1.

# Description of Lot 50.

Homesteads  
 Kamehameha & Wailau, Kau. Homestead Map. 17.

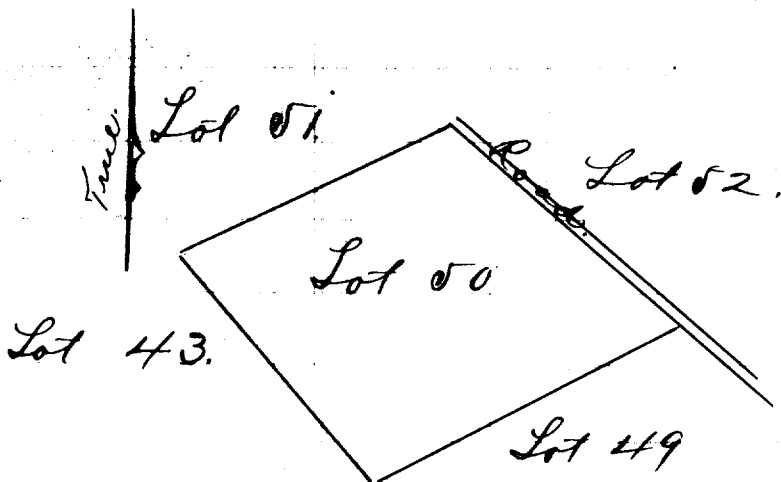
Beginning at a point, which is 13710 feet North and 13873 feet West from Cook Survey Station "Puehu", ~~and~~ as shown by Homestead Map No. 17 on file in the Office of the Government Survey, and running as follows—

- 1. S. 41° 20' E. true 800 feet along Lot 43
- \* 2. N. 61° 55' E. " ~~897~~<sup>890</sup> " " " 49
- 3. N. 49° 45' W. " 800 " " " Road
- 4. S. 63° 30' W. " 790 " " " Lot 51 to initial point and containing an area of  $14 \frac{23}{100}$  Acres.

Aug. 20<sup>th</sup> 1892

W. W. W. W.

\* Changed by Newton March 1907.



Scale 500 feet = 1 inch

N	S	E	W	Area
29019	943.2	1313.6	1317.6	28.

Newton March 1897

107