

Kampo Govt Lots

Lot 4

Copy furnished
Public Land Office
May 31 - 1901

1/2 of Grant No. 4491

TO Elmer E. Paston
Date. July 19, 1901

File in Carton 34.

Description of Government Lot 4, Kaupo, Maui.

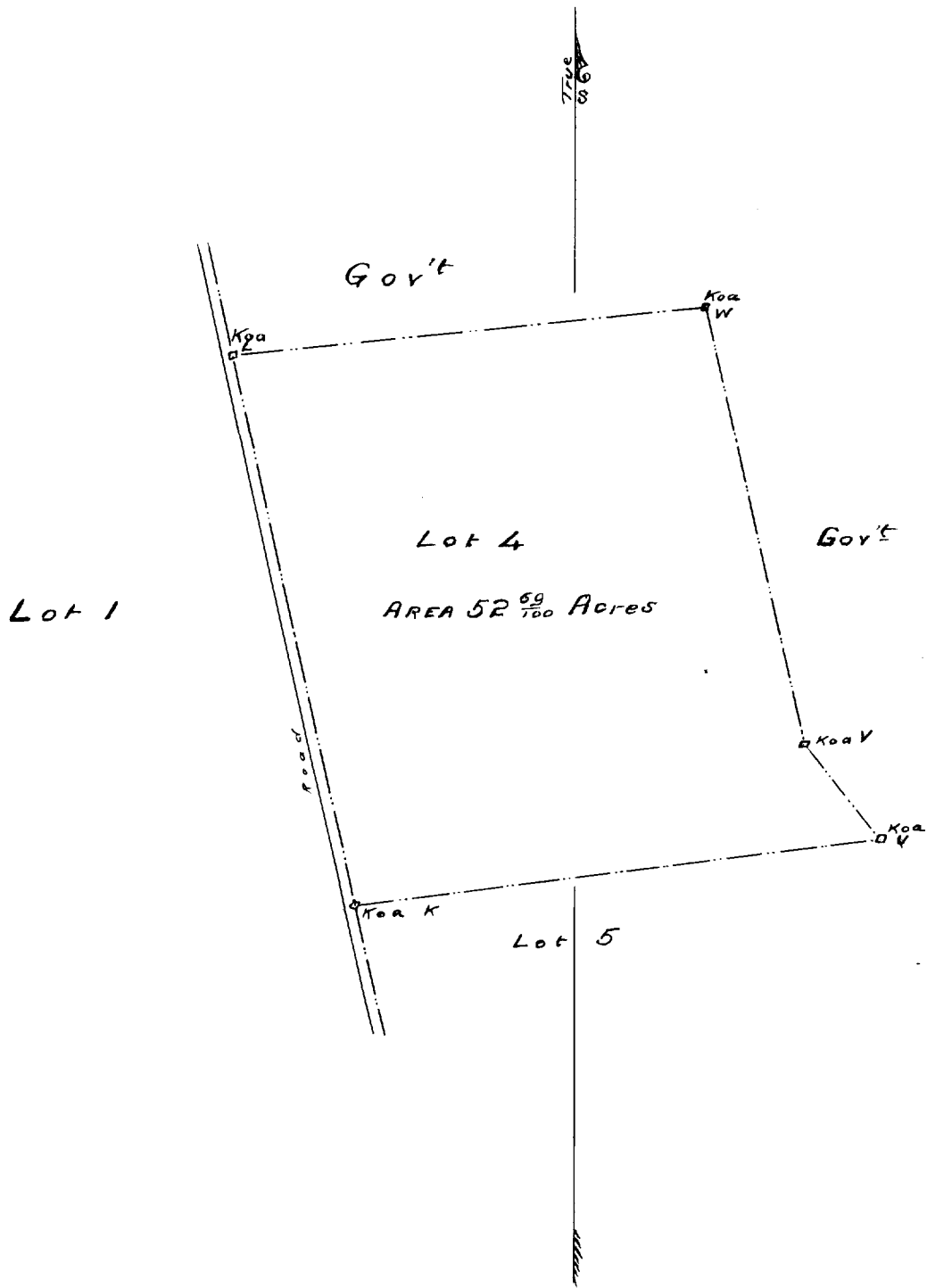
Beginning at the NW corner of this lot, at Koa L on road 30 feet east of the North east corner of Lot 1, and running by true bearings;

- | | | | | |
|---|---|-----------------------------------|-------------------------|---|
| 1 | S | ^{30'} 12° 45' E | 1645 | feet along road 30 feet wide to Koa tree K; |
| 2 | N | 82° 18' E | 1550 | " do Lot 5 do U; |
| 3 | N | 38° 40' W | 358 | " do Government do V; |
| 4 | N | 12° 45' W | 1315 | " do do do W; |
| 5 | S | 84° 55' W
82° 55' W | 1390
1395 | " do do do to the |

initial point, and containing
an area of 52 ⁶⁹/₁₀₀ acres.

Honolulu, }
Sept 28th 1895 }

S. M. Kawakami



Scale 500 Feet = 1 inch