

Description of Lot 38

Hamesead Map 16

Waipiuwaii Lots 410

Furnished.

Grant No. 3825

TO D. Wilburn

Date.

Copy to Int. Office
Nov. 22, 1893

Description of Lot 38.

Homestead Map 16.

Waipunaeei Lots, Kilo Hawaii.

The Beginning at East corner of this Lot, adjoining Lot 36, at a point on road, 1135 ft S. ^{well} 1422 ft. of concrete refuse block at N side of Lot 38, and running as follows, by true bearings:

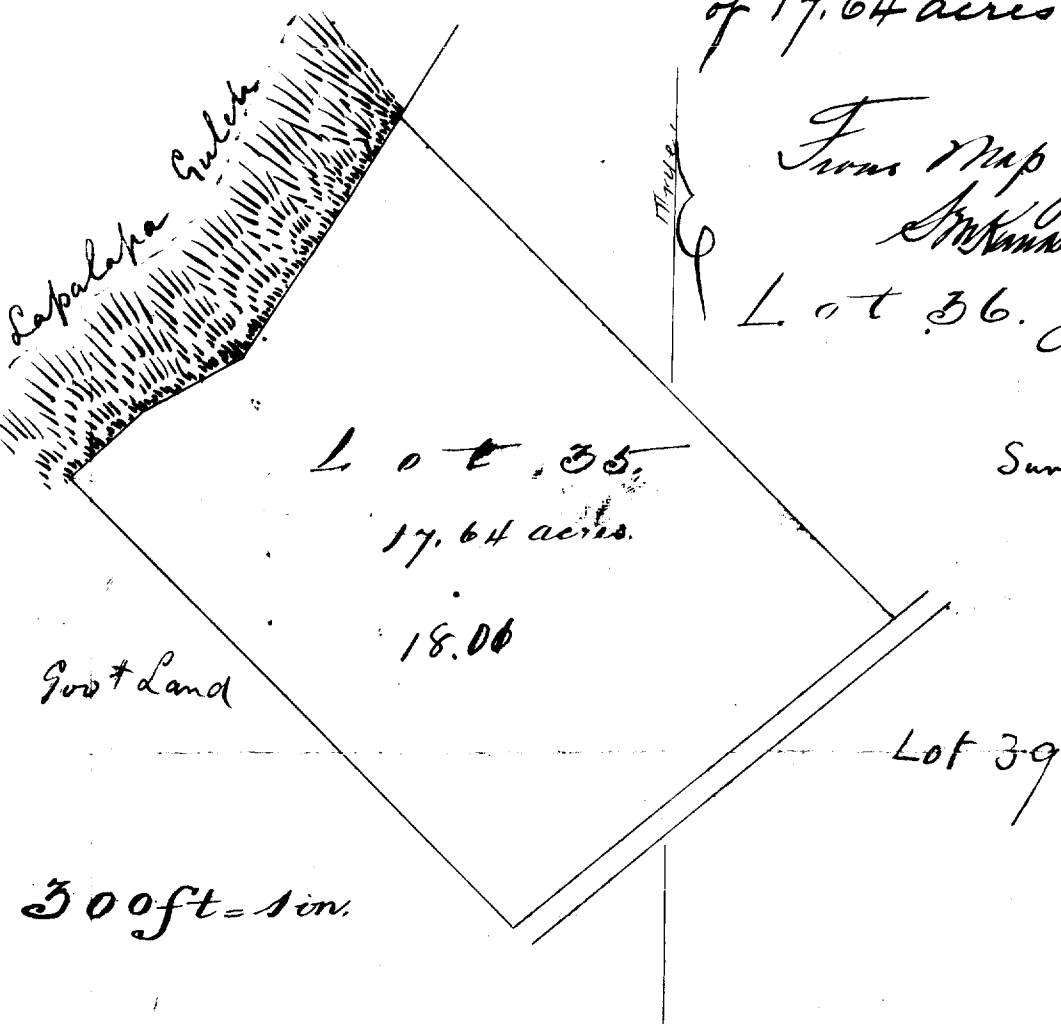
1. S 50° 10' W true 766 ft. along road.
2. N 45° 30' W true 990 ft. to edge of Pali.
3. N 45° 50' E true 150 ft. along edge of Pali
4. N 61° 30' E true 175 ft. along the same,
5. N 32° 55' E true 453 ft. along the same
6. S 45° 30' E true 1100 ft. along Lot 36, to initial

point, and containing an area of 17.64 acres.

From Map by A. B. Schuchman
Honolulu.

Lot 36. June 15 1891

Survey by A. B. Schuchman
1890



Lot 35,
17.64 acres.

18.00

God + Land

Lot 39

300ft = 1 in.