

Description of Lot 36
Homestead map 16
Waipoua ~~lot~~ 5. Hills

Grant No. 4672

TO *J. Mulbers*
Date.

Copy furnished Land Office
June 18-1902

File in Carton 131.

Description of Lot 36,

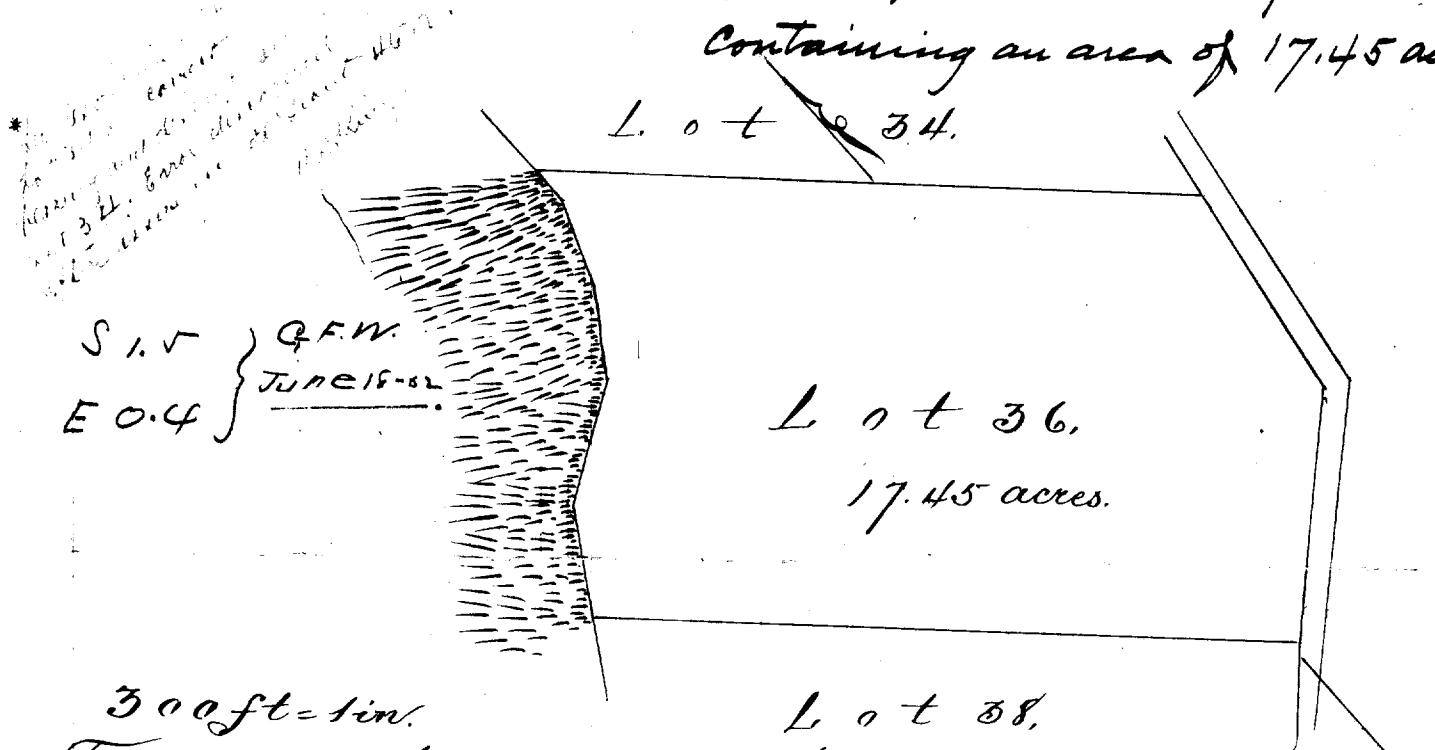
Homestead Map 16,

Waipunaui Lots, Hills, Hawaii

Beginning at a point on road at South corner of this lot, being East corner of Lot 38, 1135 ft S 8 1422 ft W of reference concrete block at NW side of Lot 33, and running as follows.

- 1 N 45° 30' W true 1100 ft along Lot 38;
- 2 N 31° 30' E true 189 ft along edge of Pali;
- 3 N 57° 20' E true 195 ft along the same;
- 4 N 35° 00' E true, 155 ft along the same;
- 5 N 21° 15' E true 150 ft along the same;
- 6 N 1° 20' W true 45 ft along the same to N corner
- * 7 S 45° 30' E true 1045 ft along Lot 34;
- 8 S 9° 20' W true 340 ft along road;
- 9 S 47° 30' W true 390 ft along road.
- 10 S 50° 10' W true 30 ft along road to initial point and

Containing an area of 17.45 ac.



From Map of A. Sachse, S. M. Kaua'kani, June 15 1891