

Description of Lot 33

Hawalead map 16,

Keipumalei Lots. Hilo.

Grant No.

TO

Date.

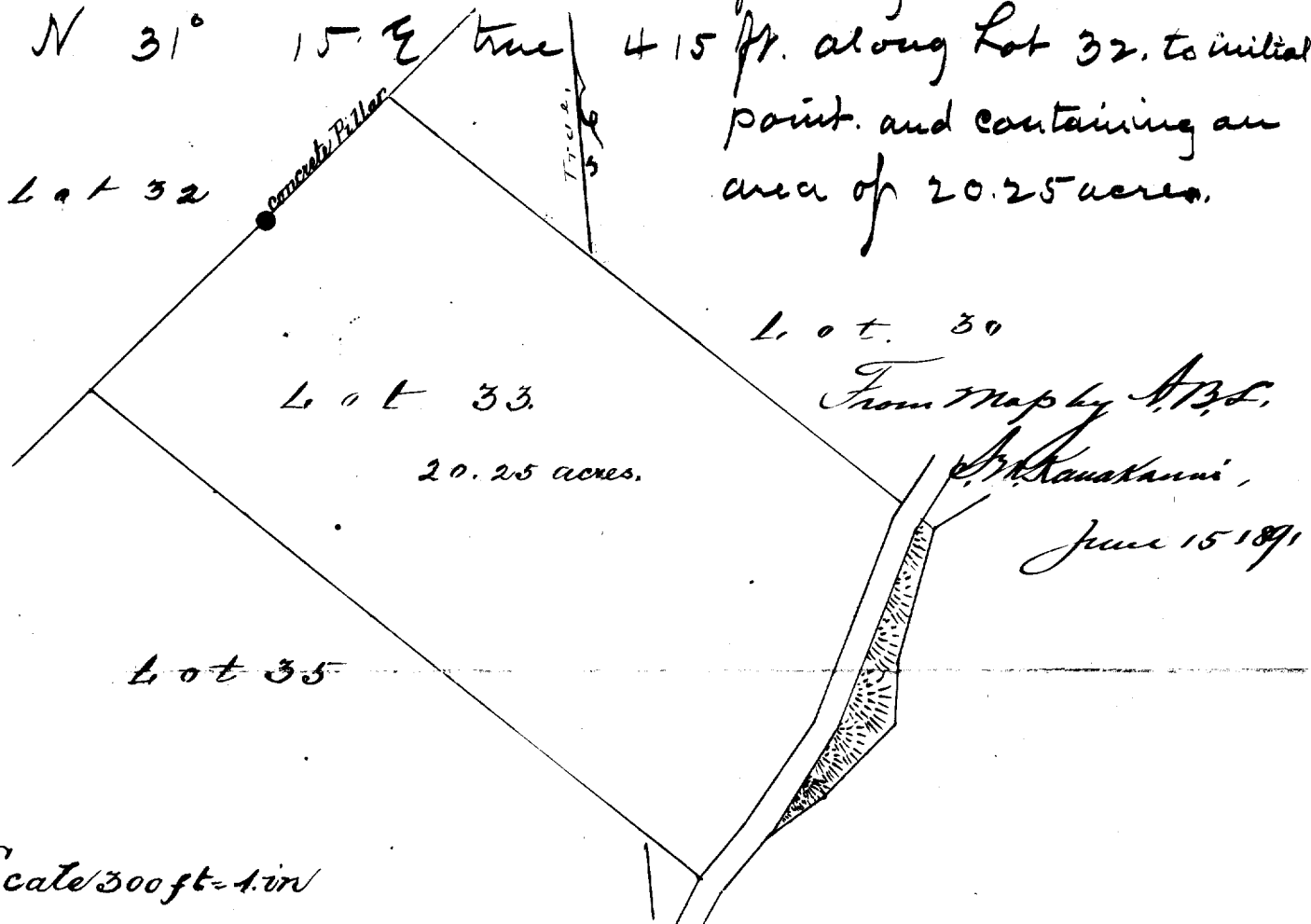
# Description of Lot 33.

Homestead Map 16.

Waipunaia Lot Hills, Hawaii

Beginning at concrete reference block, at NW side of this lot and running as follows:

- 1 N 50° 40' E true 285 ft along Lot 32;
- 2 S 45° 30' E true 1167 ft along Lot 30; to bottom of Maunae gulch.
- 3 S 16° 40' W true 330 ft, the middle of the gulch being the boundary.
- 4 S 54° 15' W true 289 ft along same, to a point on road, at mauka edge of gulch.
- 5 S 62° 30' W true, 137 ft across road.
- 6 N 45° 30' W true, 1310 ft along Lot 35.
- 7 N 31° 15' E true 415 ft. along Lot 32, to initial point, and containing an area of 20.25 acres.



Scale 300 ft = 1 in