

Lot 32.
Homestead Map 3.
Kaapahu.

Copy furnished Land Office
Oct. 17-1901 G.F. Wright

Grant 455-3
Francisco Marques Espinda

✓
File in Contm 77

Description of Lot 32. Homestead Map 3.
Kaapahu, etc., Hamakua, Hawaii.

Beginning at the west corner of Lot 31, at 30 ft road, this point being S. 2980 ft. E. 2282 ft. approx. from Kalamoi Station, thence running by true bearings:

1. S. 27° 20' W. 522 ft. along 30 ft Road.

2. S. 72° 55' E. 1638 " " Lot 33.

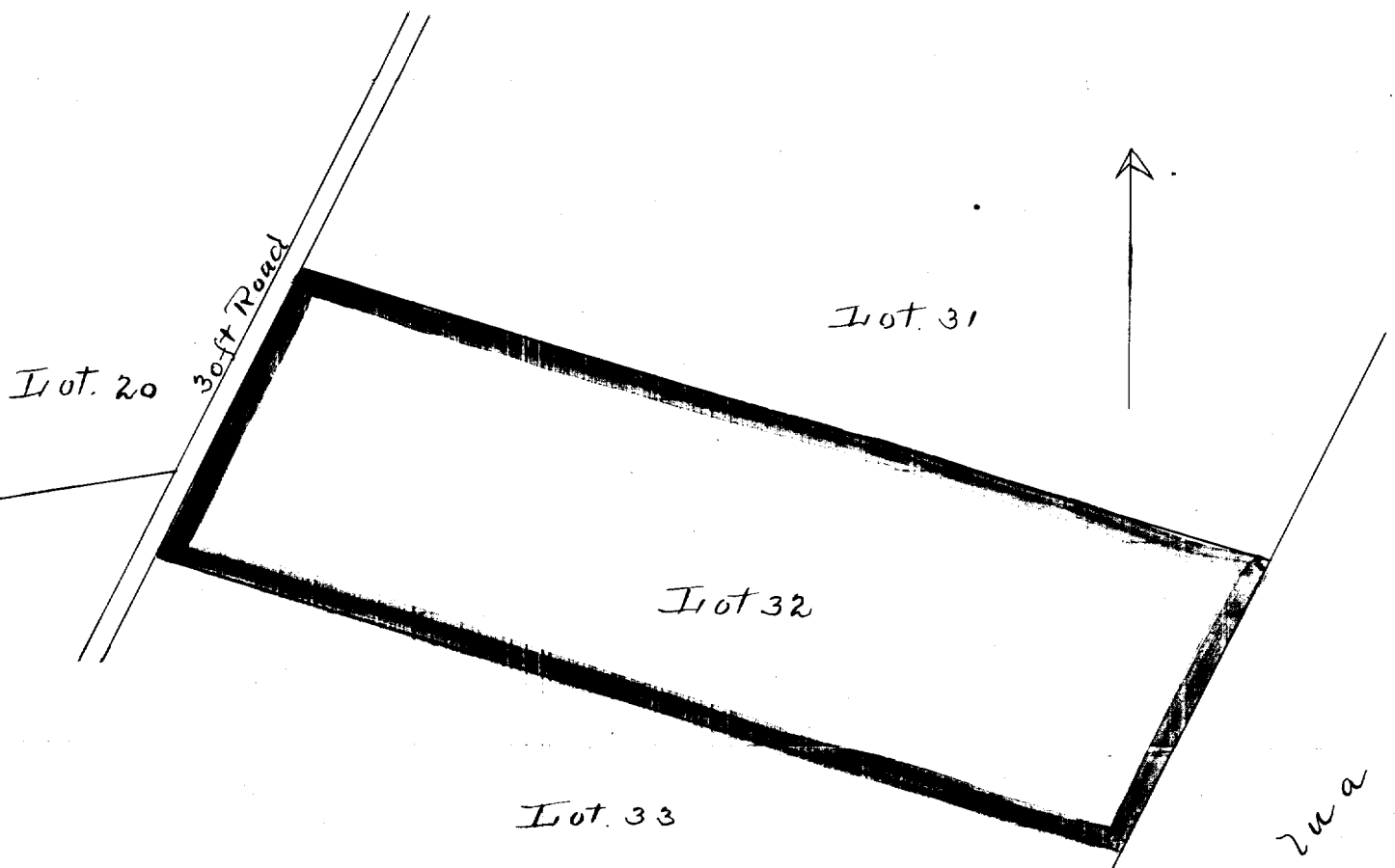
3. N 26° 50' E. 526 " " Govt Land.

4. N 73° 15' W. 1634 " " Lot 31 to point of beginning.
and containing an area of 19 1/2 Acres.

Nov. 7th 1895

Notes of Survey by O. Sornson
Survey by J. F. Brown

Error - 4.6 S }
1.2 W } Wright
Oct. - 1901



Lot. 20

30-ft Road

Lot. 31

Lot 32

Lot. 33

Karna

Scale - 300ft = 1inch