

- Lot. 30.

Homestead Map. 3.

Kaapahu.

Copy furnished Land Office
Oct 17-1901 - G. F. Wright

Grant 4V-52

Francisco Freitas

File in Cartm 77

Description of Lot 30. Homestead Map 3.
 Kaapahu, etc., Hamakua, Hawaii.

Beginning at the North angle, at 30 ft road, joining R.P. 7281, this point being S. 2089 ft. E. 3012 ft. approx. from Kalamia Station, thence running by true bearings:

1. - S. 46° 50' W. 650 ft along 30 ft road.

2. - S. 74° 10' E. 1618 " " Lot 31.

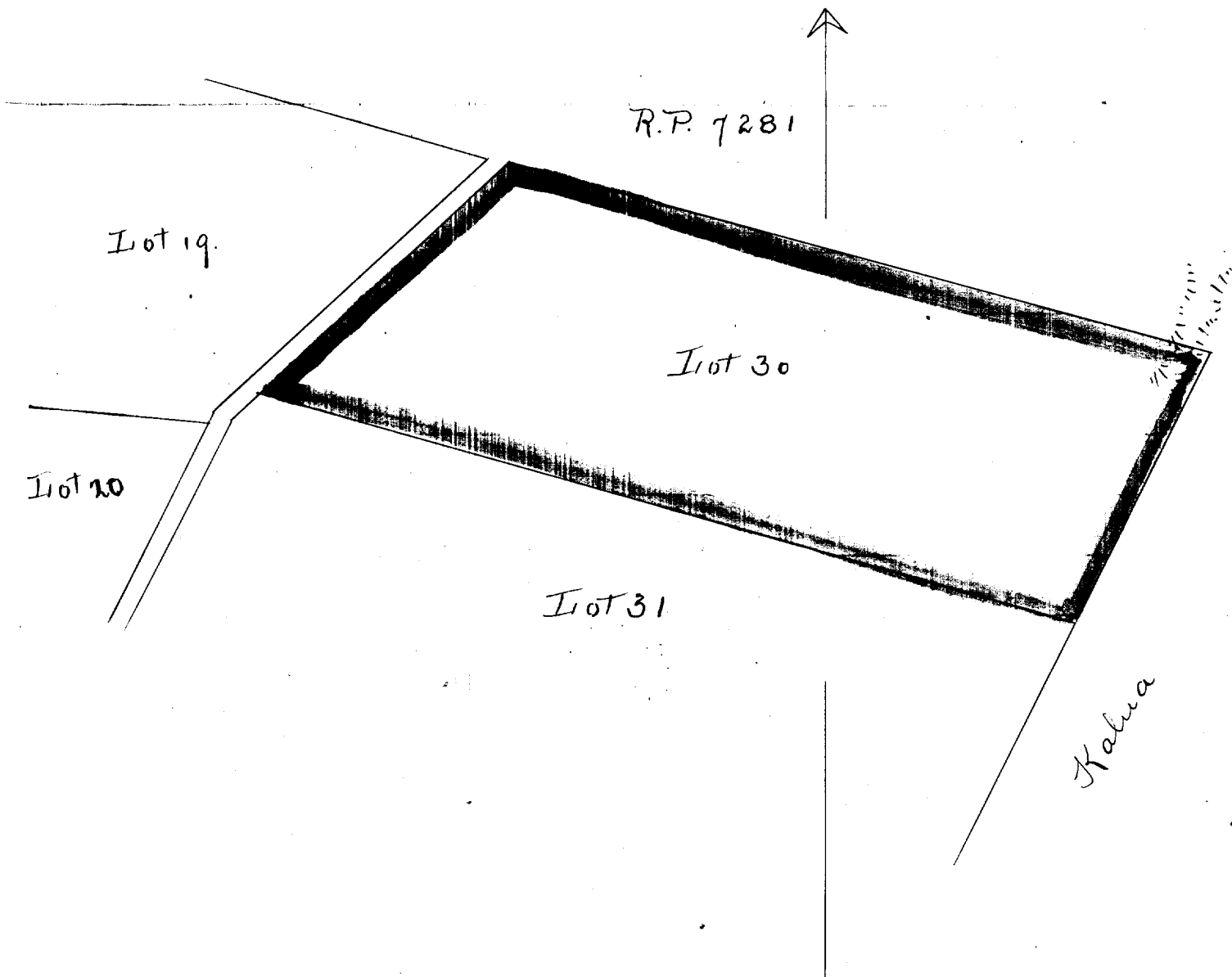
3. - N. 26° 50' E. 580 " " Gov't land.

4. - N. 74° 50' W. 1390 " " R.P. 7281 to point of beginning
 and containing an area of 19 1/10 acres.

Nov. 7th 1895

Notes of Survey by O. Johnson
 Survey by J. F. Brown

Error	4.9	S	} Wright Oct. 1901
	2.7	E	



Scale - 300ft = 1 inch