

Lot 27
Honolulu Map No. 5
Panama, Hawaiian
 Copy Furnished for Grant

Grant No. 4474
 Juan Rodriguez
 Copy furnished
 Public Lands Office
 May 29-1901

2
 5
 9
 0
 0
 4
 1
 3
 2

Homestead Map No.5.

Paaule, Hamakua, Hawaii.

Lot 27.

Beginning at the north angle, at 30 ft. road, joining Lot 26,
this point being S 2108 ft W 5680 ft. approx. from Kehelalele Sta.
thence running by true bearings:

1. S 69 05 E 1797 ft. along Lot 26

2. S 17 35 W 66 ft.

3. S 33 15 W 453 ft.

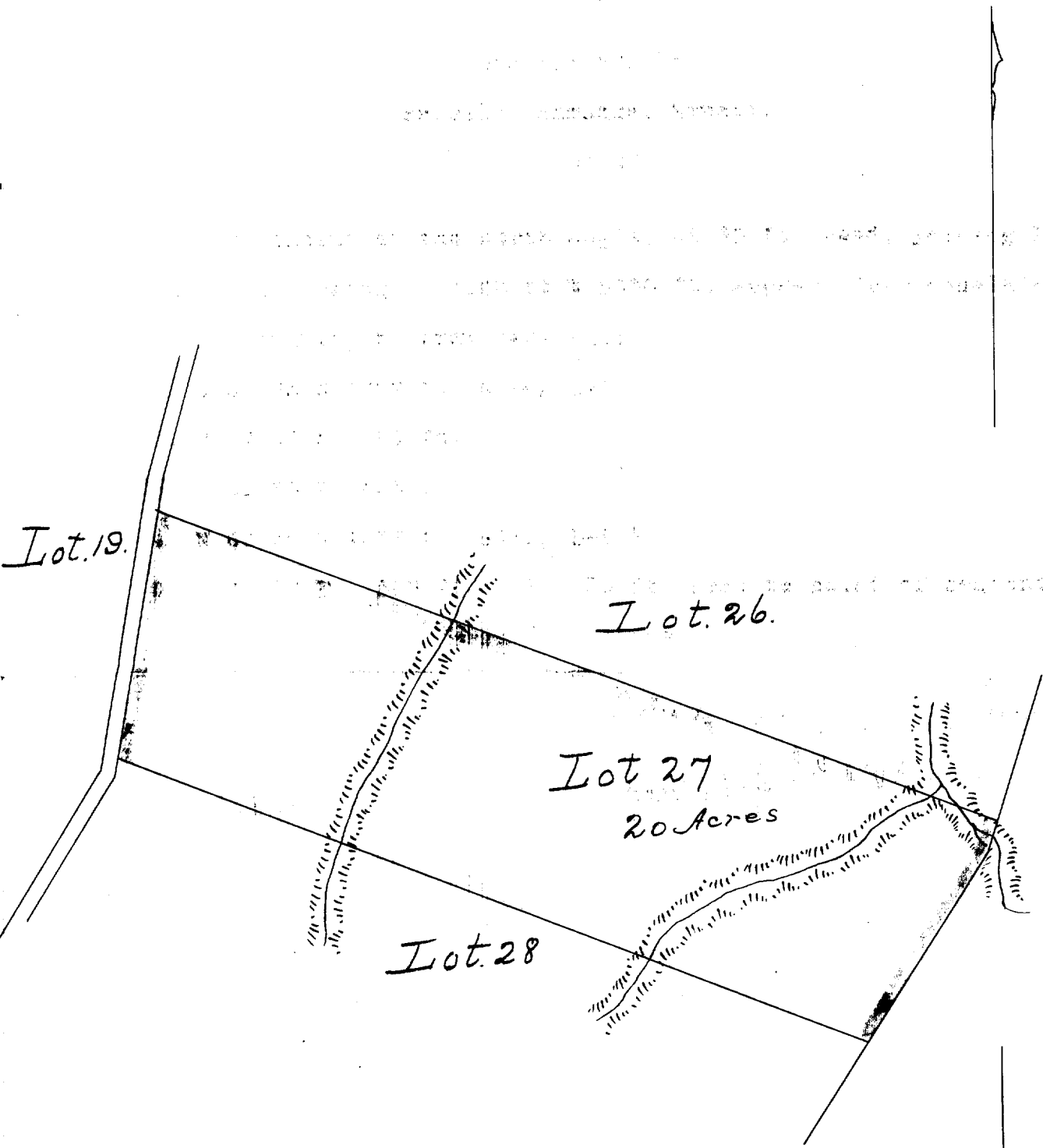
4. N 68 30 W 1612 ft. along Lot 28

5. N 10 10 E 500 ft. " 30 ft. road to point of beginning.

Area 20 acres.

Notes of survey by O.L. Somerson.
from map by J.F. Brown.

June 3rd 1896.



Lot. 19.

Lot. 26.

Lot 27
20 Acres

Lot. 28

150 ft
 200 ft
 300 ft
 400 ft
 500 ft
 600 ft
 700 ft
 800 ft
 900 ft
 1000 ft

100 ft
 200 ft
 300 ft
 400 ft
 500 ft
 600 ft
 700 ft
 800 ft
 900 ft
 1000 ft

Scale 300 ft = 1 inch