

Lot 26.

Homestead Map 3.

Kaapahu.

Copies furnished Land Office  
Oct. 17-1901 L. F. Wright

Grant 45-V-4  
Joao Fernandes Affonso

File in Carton 77

Description of Lot 26. Homestead Map. 3.  
 Kaapahu, etc., Hoamakuu, Hawaii.

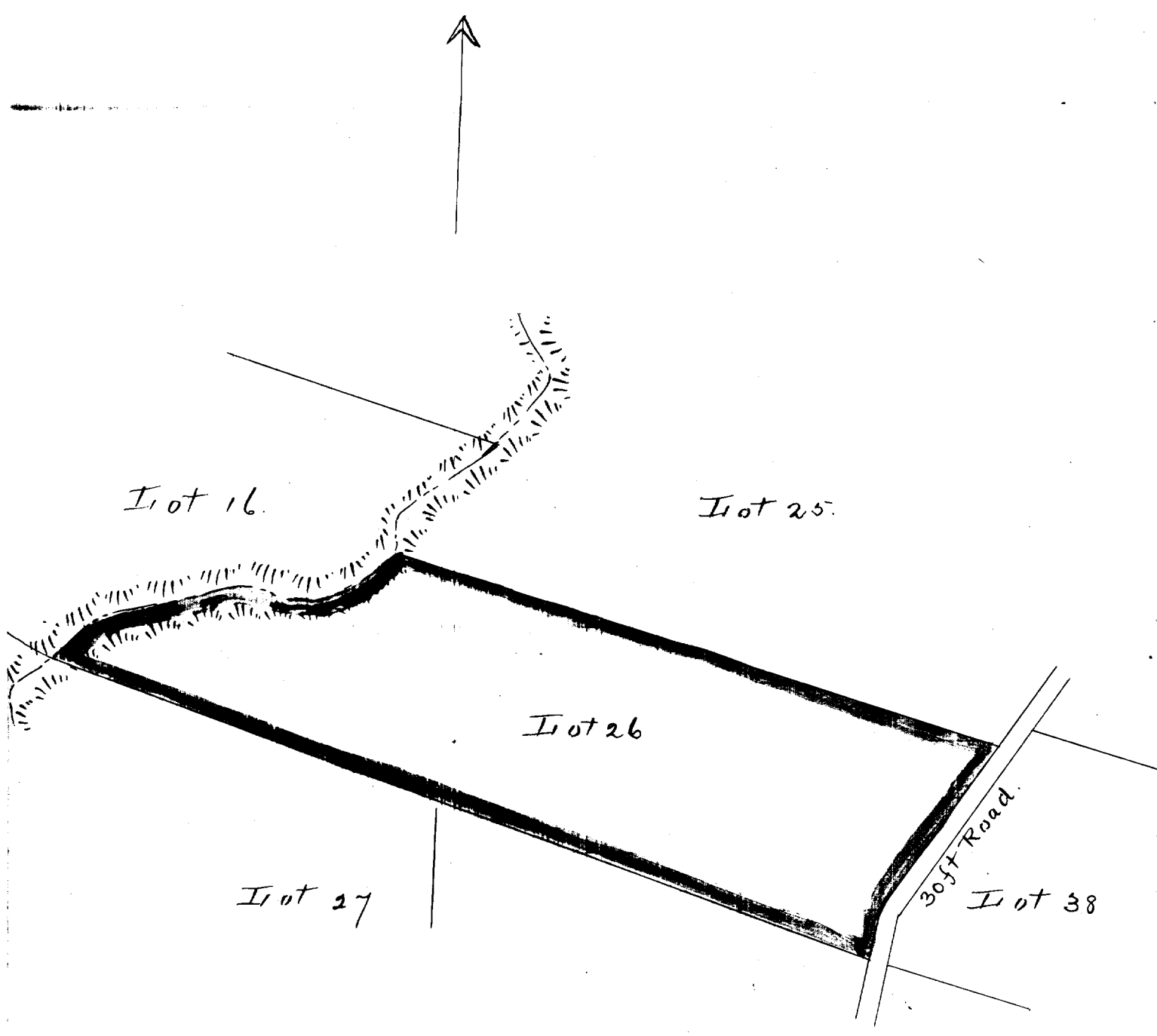
Beginning at the South corner of Lot 25, at 30 ft road, this point being S. 6218 ft. E. 1164 ft. approx. from Kalamia Station, thence running by true bearings:

- |    |        |        |          |                                  |
|----|--------|--------|----------|----------------------------------|
| 1. | N. 74° | 20' N. | 1318 ft. | along Lot 25 to middle of Gulch. |
| 2. | S. 53° | 20' N. | 189 "    | " bottom of Gulch                |
| 3. | S. 84° | 45' N. | 447 "    | " — " —                          |
| 4. | S. 48° | 10' N. | 143 "    | " — " —                          |
| 5. | S. 72° | 5' E.  | 1810 "   | " Lot 27 to 30 ft road           |
| 6. | N. 8°  | 15' E. | 98 "     | " 30 ft road                     |
| 7. | N. 32° | 40' E. | 223 "    | " — " —                          |
| 8. | N. 35° | 0' E.  | 200 "    | " — " — to point of beginning    |
- and containing an area of 17 acres

Nov. 6th 1895

Notes of Survey by O. Johnson  
 Survey by J. F. Brown.

Error 2.3 N } might  
 0.7 E } Oct-1901



Scale - 300ft = 1 inch