

Lot. 25.

Homestead Map. 3.

Kaapahu.

Grant No. 4383

TO *Antone Moniz*

Date.

✓  
File in Cartm 77

Description of Lot. 25., Homestead Map. 3.  
 Kaapahu, etc., Hamakua, Hawaii.

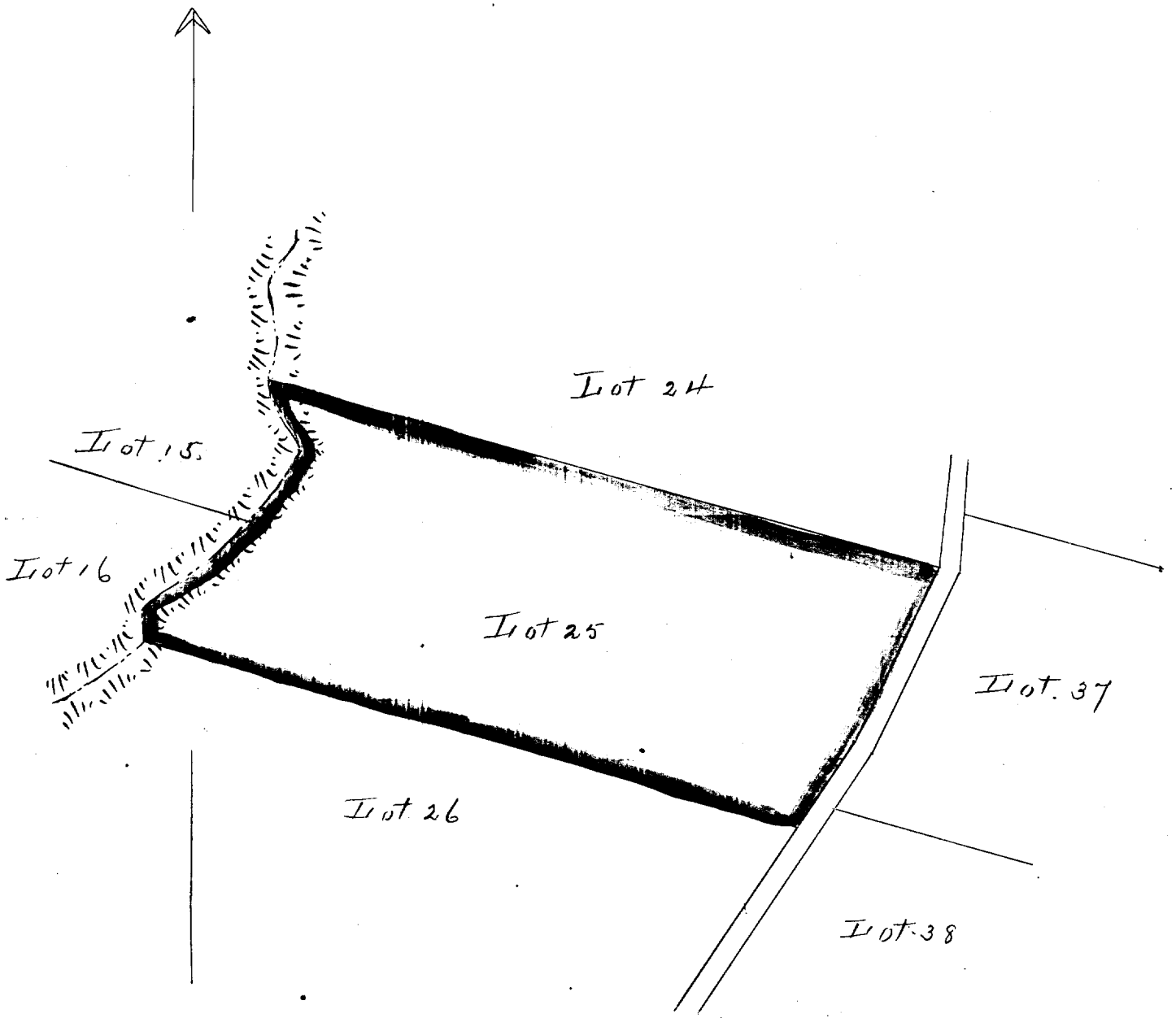
Beginning at the south corner of Lot. 24., at 30 ft road,  
 this point being S 57° 20' E. 1440 ft. approx. from  
 Kalanikai Station, thence running by true bearings:

1.	N. 74° 35' N.	1344 ft	along Lot 24 to middle of Gulch.
2.	S. 26° 50' E.	152 "	" bottom of Gulch.
3.	S. 35° 0' N.	167 .	" — . —
4.	S. 42° 20' N.	317 .	" — . —
5.	S. 74° 20' E.	1318 .	Lot 26 to 30 ft road.
6.	N. 33° 30' E.	192 "	30 ft road.
7.	N. 25° 40' E.	379 "	" — " — to point of beginning

and containing an area of  $16\frac{5}{10}$  acres.

Nov. 6th 1895

Notes of Survey by O. Johnson.  
 Survey by J. F. Brown.



Scale - 300ft = 1 inch.