

Description of Lot 25  
Homestead Map 16  
Waipunaia Lot. Hilo H.

Copy furnished Land Office Aug 10/01

Grant \$500  
H. B. Kalino

File in Carton 131.

Description of Lot 25,

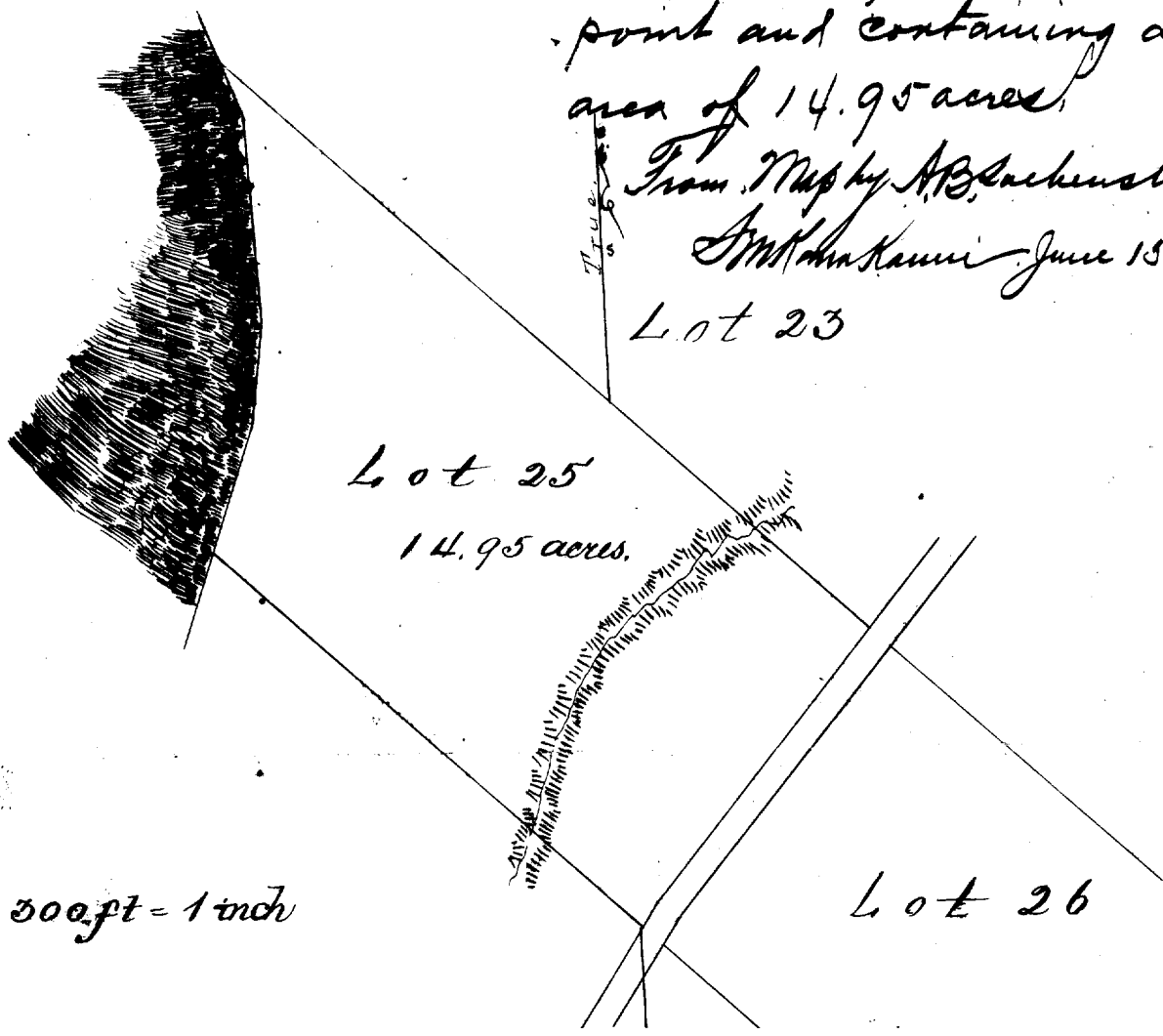
Homestead Map 16,

Waipunaui Lots Hilo, Hawaii

Beginning at a point on road, at South corner of this lot, adjoining Lot 28, 1463 ft North, 232 ft West of concrete reference block at North West side of Lot 33 and running as follows:

1. N ~~45~~<sup>45</sup> 30' W true, 915 ft along Lot 28;
2. N 4 40' E true 782 ft to West corner of Lot 22, edge of pali being the boundary
3. S ~~45~~<sup>45</sup> 30' E true, 1384 ft along Lot 22,
4. S 41 20' W true 560 ft, along road;
5. S 34 20' W true 44 ft along road to initial point and containing an area of 14.95 acres.

From Map by A. B. Sackenstein,  
 S. M. Kamei June 15 1891  
 Lot 23



Scale 300 ft = 1 inch