

Lat 24
Homestead Map No 5
Paquilo Hamakua

Copy furnished for Grant
July 22nd 1899
Grant No. 4340

Manil Justado

2
5
0
2
0
0
4
1
4
2
9
2

File in Cartm 81

For Grant to *Mannel Guntado*
Purchase Price \$ 150⁰⁰

Homestead Map No. 5.
Paauilo, Hanakua, Hawaii.

Let 24.

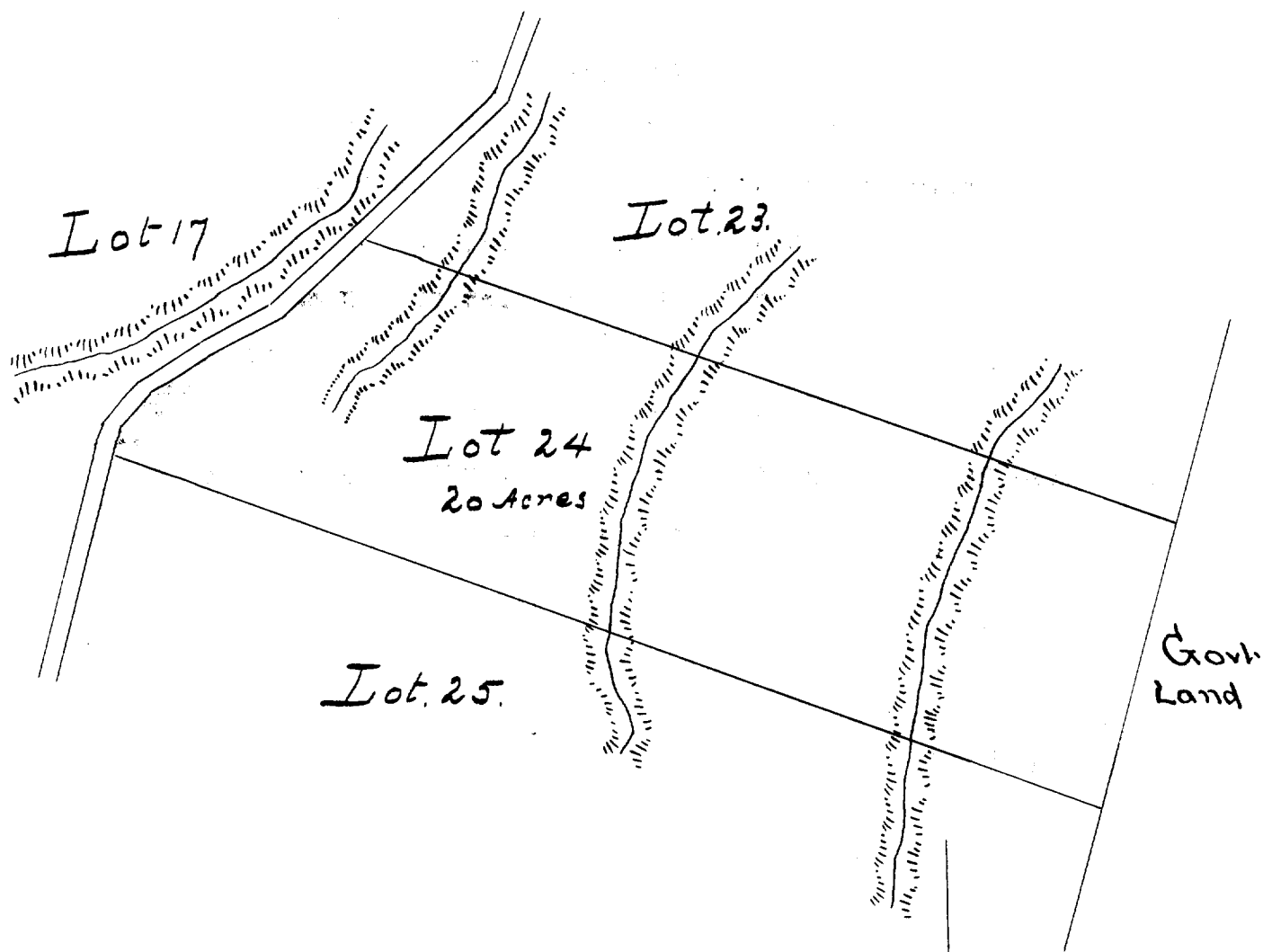
Beginning at the north angle, at 30 ft. read, joining Let 23,
this point being S 849 ft. W 5003 ft. approx. from Kehelalele Sta.
thence running by true bearings:

1. S 69 55 E 1506 ft. along Let 23
2. S 15 40 W 510 ft. " *Govt Land*
3. N 69 30 W 1830 ft. " Let 25 to 30 ft. read
4. N 15 33 E 42 ft. " 30 ft. read
5. N 40 48 E 80 ft. " " "
6. N 57 45 E 131 ft. " " "
7. N 63 22 E 140 ft. " " "
8. N 47 57 E 197 ft. " " " to point of beginning.

Area 20 Acres.

*Notes of survey by O. L. Larsson
from Map by J. P. Brown.*

June 3rd 1896



West
 out of the north
 road
 1871
 11/10

Scale 300ft = 1 inch

12 miles