

<sup>4867</sup>  
Lot 21.

Homestead Map 3.  
Kaapahu.

Manuel Souza

Copy Furnished for Grant

Aug 19<sup>th</sup> 1997

Grant No. 4867

✓

File in Carton 77

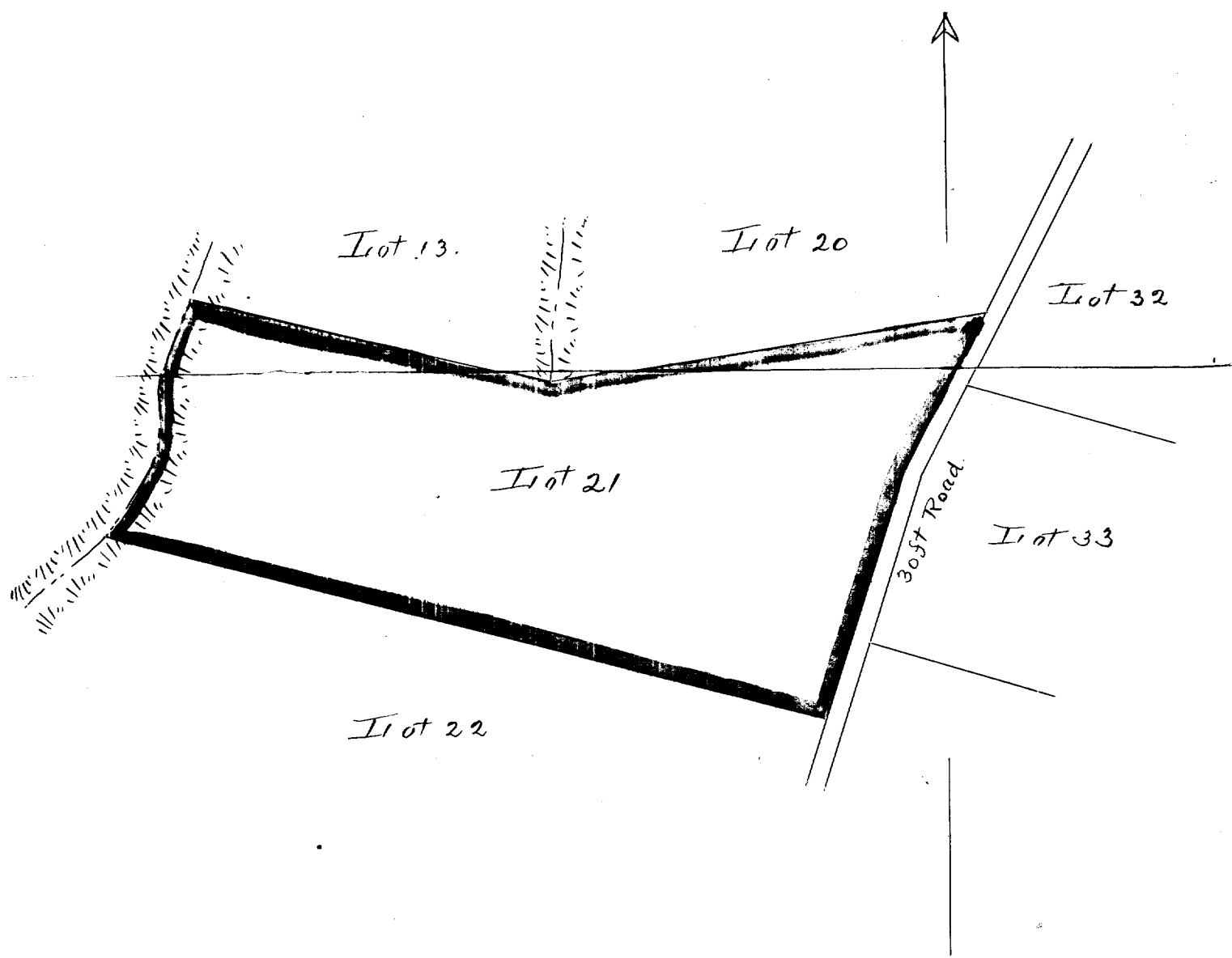
Description of Lot 21, Homestead Map 3.  
 Kaapahu, etc., Hamakua, Hawaii.

Beginning at the south corner of Lot 20, at 30 ft road,  
 this point being S. 3301 ft. E. 2075 ft approx. from  
 Kalaupai Station, thence running by true bearings:

1. - S. 81° 0' N. 862 ft. along Lot 20 to middle of gulch.
  2. - N. 76° 0' N. 708 " " Lot 13 " " "
  3. - S. 12° 15' N. 290 " " bottom of gulch
  4. - S. 30° 20' N. 218 " " " "
  5. - S. 75° 45' E. 1445 " " Lot 22 to 30 ft Road
  6. - N. 17° 40' E. 507 " " 30 ft road
  7. - N. 26° 45' E. 348 " " " " to point of beginning
- and containing an area of 19 1/4 Acres.

Nov. 6th 1895

Notes of Survey by O. Sorenson  
 Survey by J. F. Brown



Scale - 300ft = 1 inch