

Description of Lot 21

Homestead Map 16

Waipunaui Lots,

Hilo, Hawaii

Grant N

TO

Date.

Description of Lot 21.

Homestead Map, 16.

Waipunaui Lots, Hills Hawaii

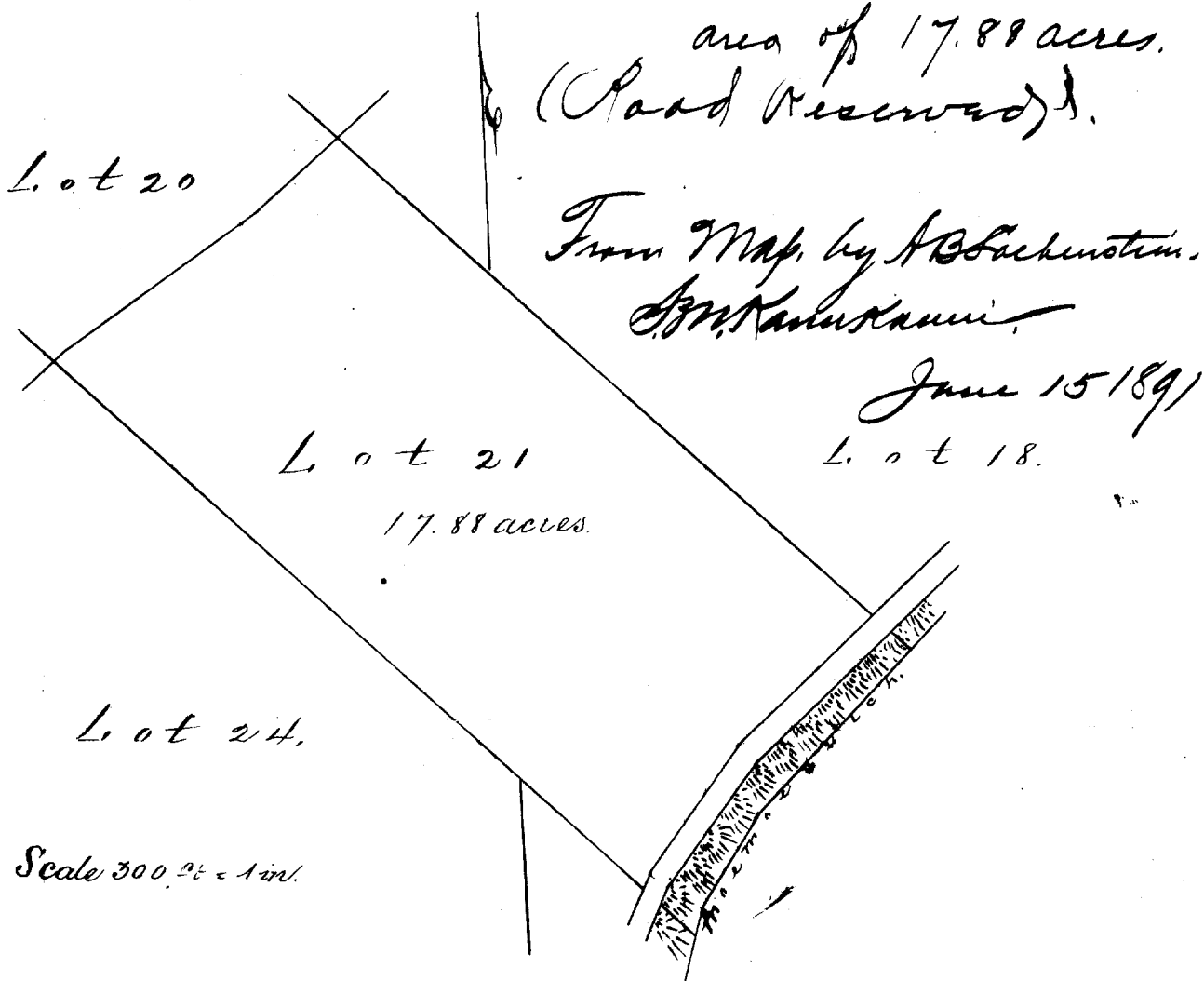
Beginning at N L of this Lot, being N. E. & S L of Lot 24, 23, 20 respectively. 1534 S. 1888 ft N of Concrete reference block, at S L of Lot 4, and running as follows.

- 1 S 45° 30' E true 1455 ft. along Lot 24 to middle of Moenoe gulch.
- 2 N 40° 10' E true. 603 ft. ^{the} middle of Moenoe gulch being the boundary.
- 3 N 45° 30' W true. 1298 ft. along Lot 18.
- 4 S 54° 55' W true 609 ft. along Lot 20 to initial point, and containing an area of 17.88 acres.

(Road Reserved).

From Map by A. Buchanan.
S. M. Kanihakauni.

June 15 1891



Scale 300 ft = 1 in.