

Lot 21

Homestead Map No 5.

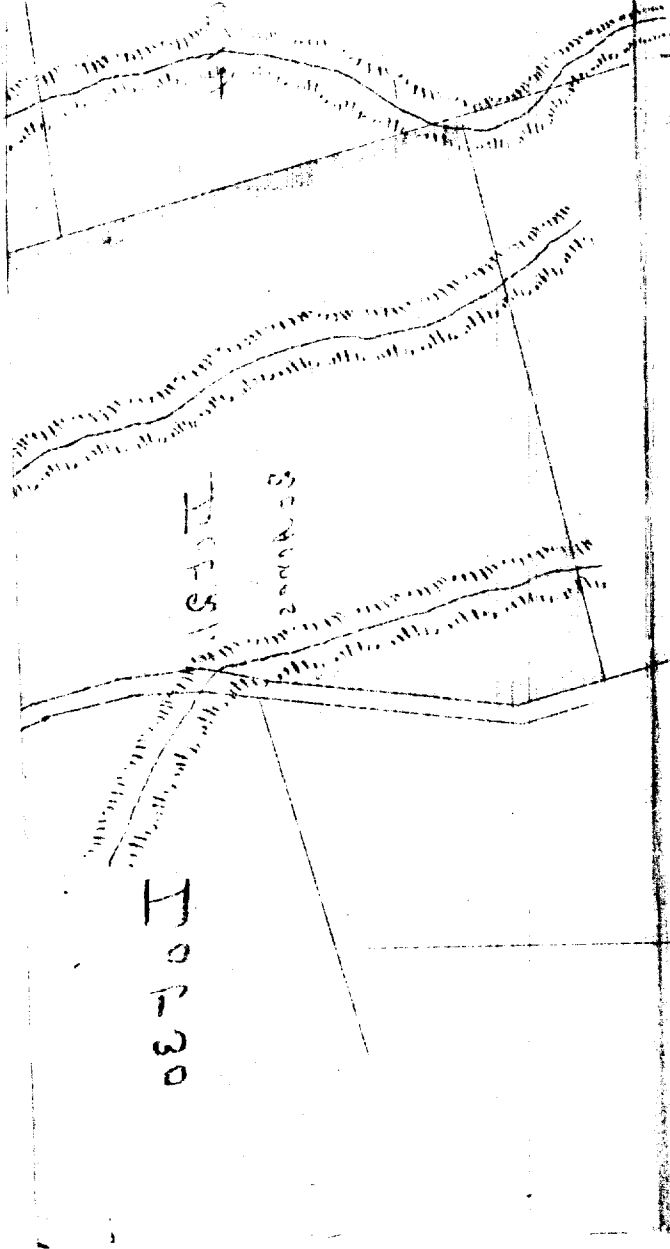
Paarilo, Hamakua

Copy Furnished for Grant

June 10th 1896

Grant No. 3947

F. A. de Luiz



ROADS

10-30

2000 ft

File in Carton 81

Homestead Map No.5.

Paaule, Hamakua, Hawaii.

Let 21.

Beginning at the east angle, at 30 ft. road, joining Let 20,
this point being S 3649 ft. W6278 ft.approx. from Kehelalele Sta.
thence running by true bearings:

1. S 34 32 W 1295 ft. along 30 ft. road
2. S 20 36 W 142.3 ft. " " "
3. S 15 42 W 143.1 ft. " " "
4. S 5 55 W 117.4 ft. " " "
5. S 7 04 E 103.8 ft. " " "
6. S 19 20 E 403.5 ft. " " "
7. S 15 20 W 137 ft. " " "
8. N 77 00 W 912 ft. " "
9. N 15 33 E 1218 ft. " Let 13 & 14
- 10 S 70 30 E 740 ft. " " 20 to point of beginning

Area 20 Acres.

Notes of Survey by O. L. Sorenson
from Map by J. F. Brown

Jan 3rd 1896

18 feet

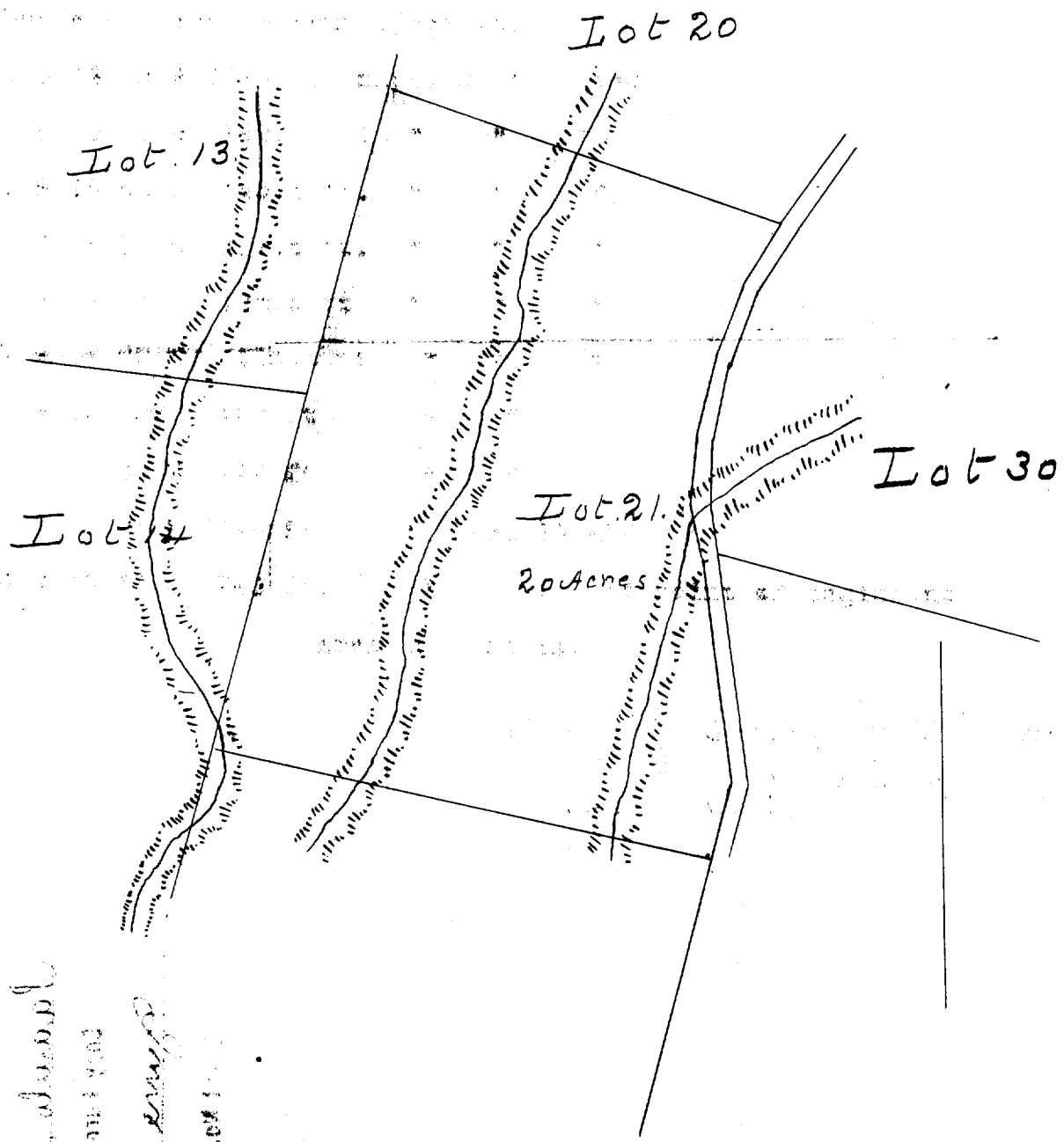
2000 ft. water level

2000 ft. water level

2000 ft. water level

2000 ft. water level

100



Scale - 300 ft = 1 inch

18 feet