

Lot 20.  
Homestead Map No 8.  
Waiakoa.

Lot 20 Map 8.

Waiakoa, Kula Maui

Marion de Carmo

Copy Furnished for Grant

Sept. 6. 1899.

Grant No. 4392.

File in Carton 5.

# Lot 20.

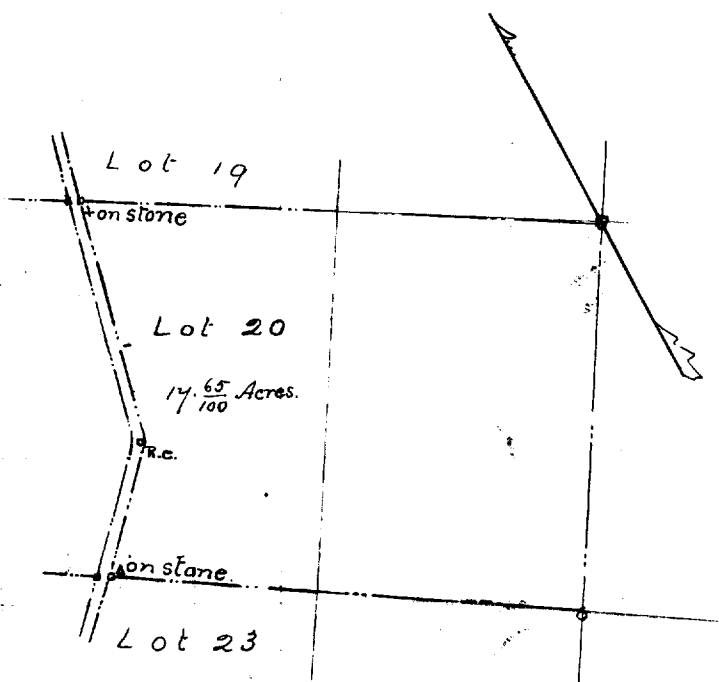
Homestead Map No 8. Waiakoa. Kula. Maui.

Beginning at the N.W. corner, at a stone marked + on mauka edge of road; and running:—

1. S 60° 50' E (true) 1086 feet along Lot 19 to a stone marked  $\Delta$ , in the center of a small gulch;
2. S 30° 30' W (true) 780 feet along Gov't, to a stone marked +;
3. N 60° 50' W (true) 984 feet along Lot 23 to a stone marked  $\Delta$  on mauka edge of road;
4. N 41° 45' E (true) 308 feet along road;
5. N 12° 1' E ( " ) ~~696~~<sup>506</sup> " " " " to point of beginning, and containing an area of  $17 \frac{65}{100}$  Acres.

Surveyed by E. D. Baldwin.  
Asst Gov't Survey.

May. 1889.



Scale 400ft = 1inch