

*Description of Lot 20,
Homestead Map 16
Waipunaui Lots Hilo.*

Grant No. 4464

TO *Chas. H. Swain*

Date.

File in Carton 131.

Description of Lot 20.

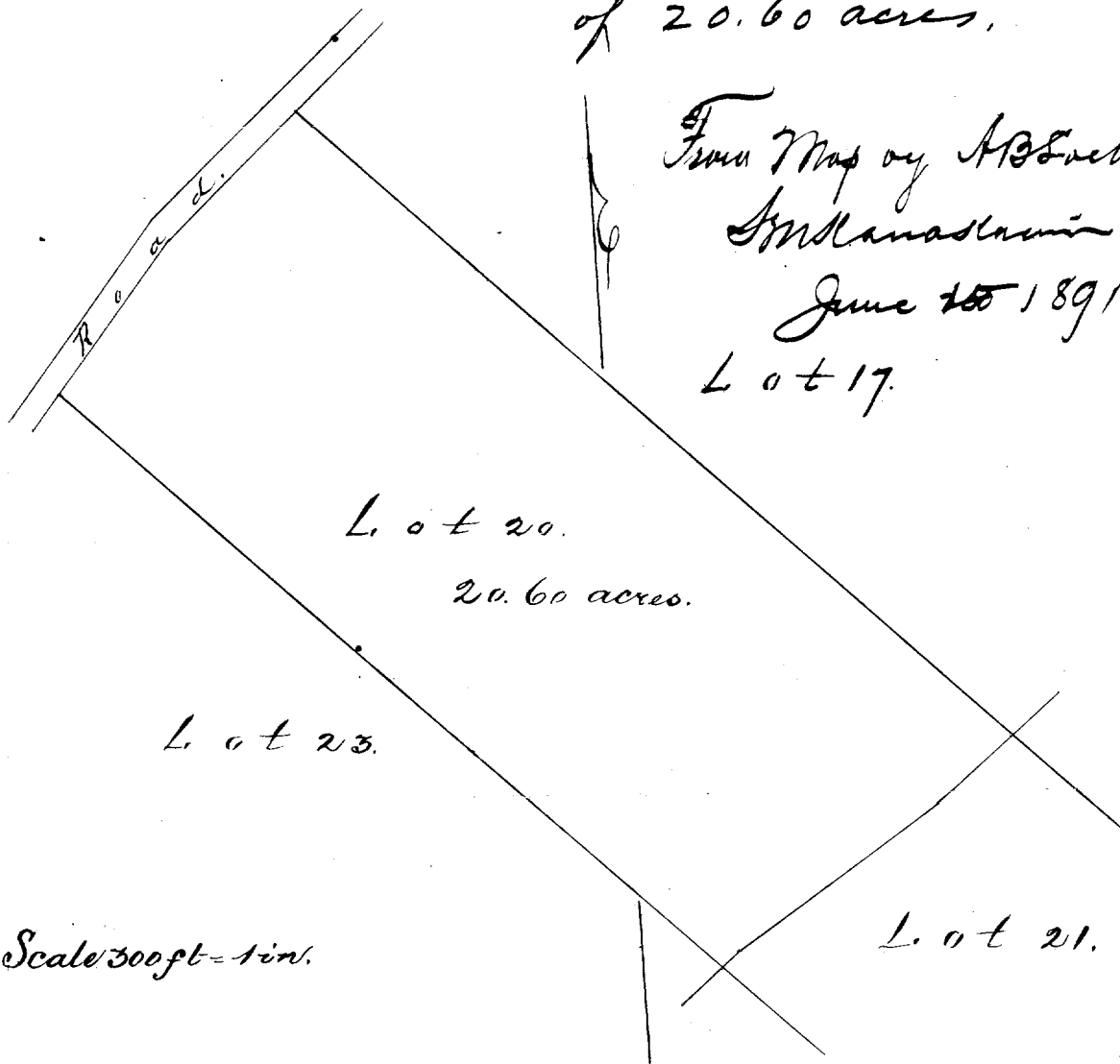
Homestead Map. 16.

Waipunalii Lats. Hilo, Hawaii.

Beginning at South L of this lot, being N. E. 87W
L of Lots 24, 23, 21 respectively, 1534 ft. S. 1888 ft.
W of reference concrete block at South L of Lot
4, and running as follows;

- 1 N 54° 55' E true 609 ft. along Lot 21;
- 2 N 45° 30' W true 1552 ft. along Lot 17;
- 3 S 48° 15' W true 285 ft. along road;
- 4 S 39° 15' W true 310 ft. along road;
- 5 S 45° 30' E true 1435 ft. along lot 23 to initial
point and containing an area
of 20.60 acres.

From Map by H. S. Ebenstein.
S. M. Maslamir
June 15 1891
Lot 17.



Scale 300ft = 1 in.