

Lot 20 Map 3

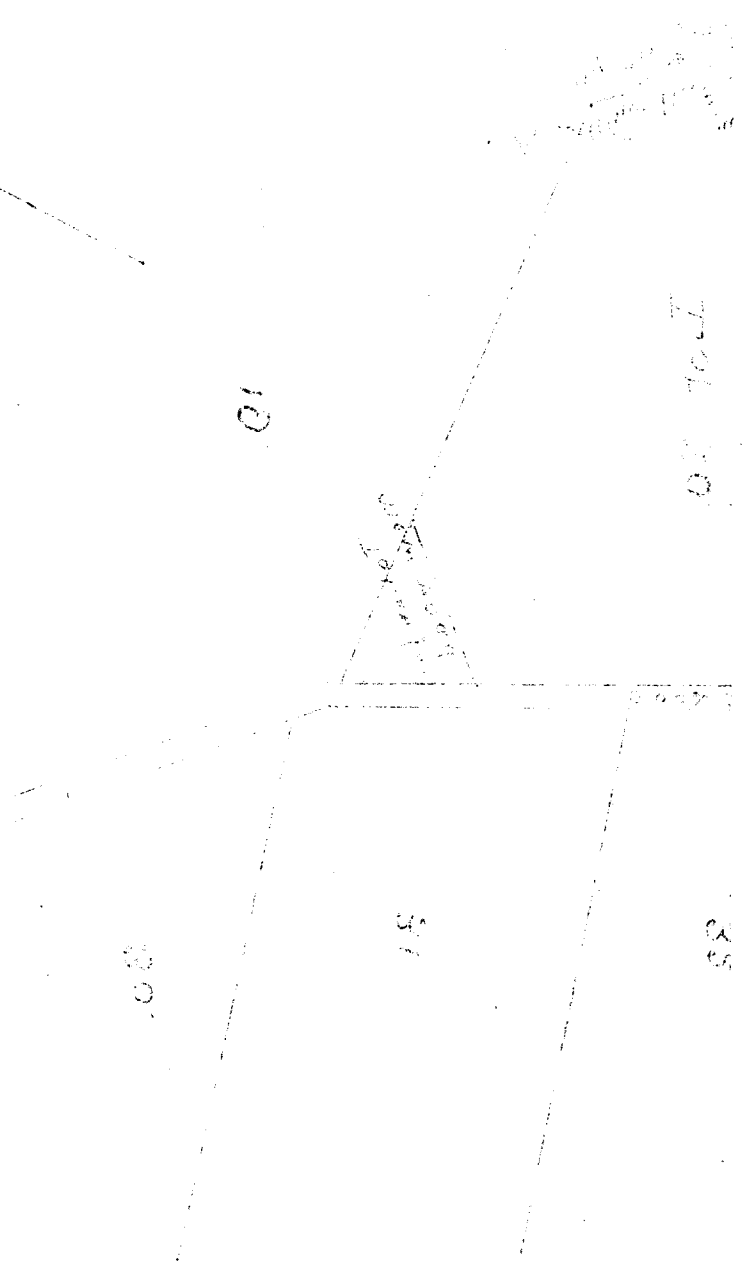
Kaapahn. Ham

C. Lovelad

FILED IN 1917

Jan 7 1899

No. 4277



File in Carton 77

For Grant to Charles Lowstad.
Purchase Price \$ 185.

Description of Homestead Lot 20, Map 3.

Kaapahu, Hamakua, Hawaii.

(Less small portion taken for new road.)

Beginning at a point on south boundary of Lot 19, 285 feet distant from the S.E. corner of said lot, (and which corner is S. 2573 feet and E. 2446 feet approximately from Kalanial Survey Station) thence running by true bearings:-

- N. 85° 45' W. 703 ft. along Lot 19 to middle of gulch,
- S. 56° 5' W. 155 ft. along Middle of gulch,
- S. 1° 5' E. 192 ft. along middle of gulch,
- S. 20° 35' W. 270 ft. along middle of gulch,
- S. 2° 15' W. 408 ft. along middle of gulch,
- N. 81° 00' E. 862 ft. along Lot 21 to 30 ft. road,
- N. 27° 20' E. 613 ft. along 30 ft. road,

Thence following the mauka side of new road to Initial Point, direct bearing and distance being N. 44° 40' W. true 274 feet.

Area 17,8/10 acres.

Above description excludes triangular lot taken for road purposes, for which settlement was made under date of Nov. 16th 1897. See Interior Department Voucher No. 9700.

J. S. Brown
Agent Pub. Lands.
Jan 7th 1899

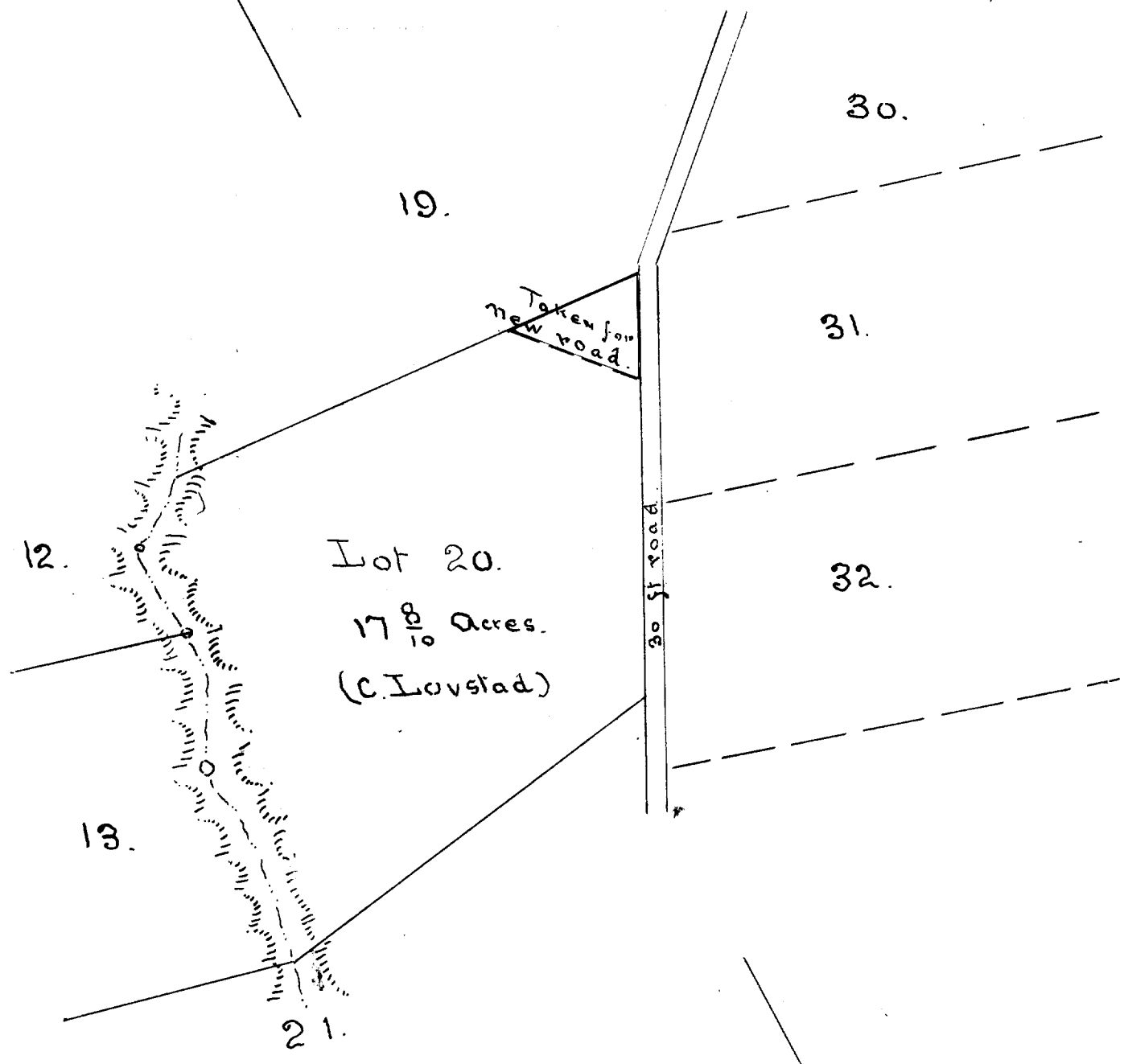
N. 976.4 E. 1136.5

S. 939.0 N. 1133.2

12.6 3.3 from J. S. Brown

E 90th of 1st
with original
bearing of

From N
road



Sc. 300 ft. to inch.
From Homestead Map 3.